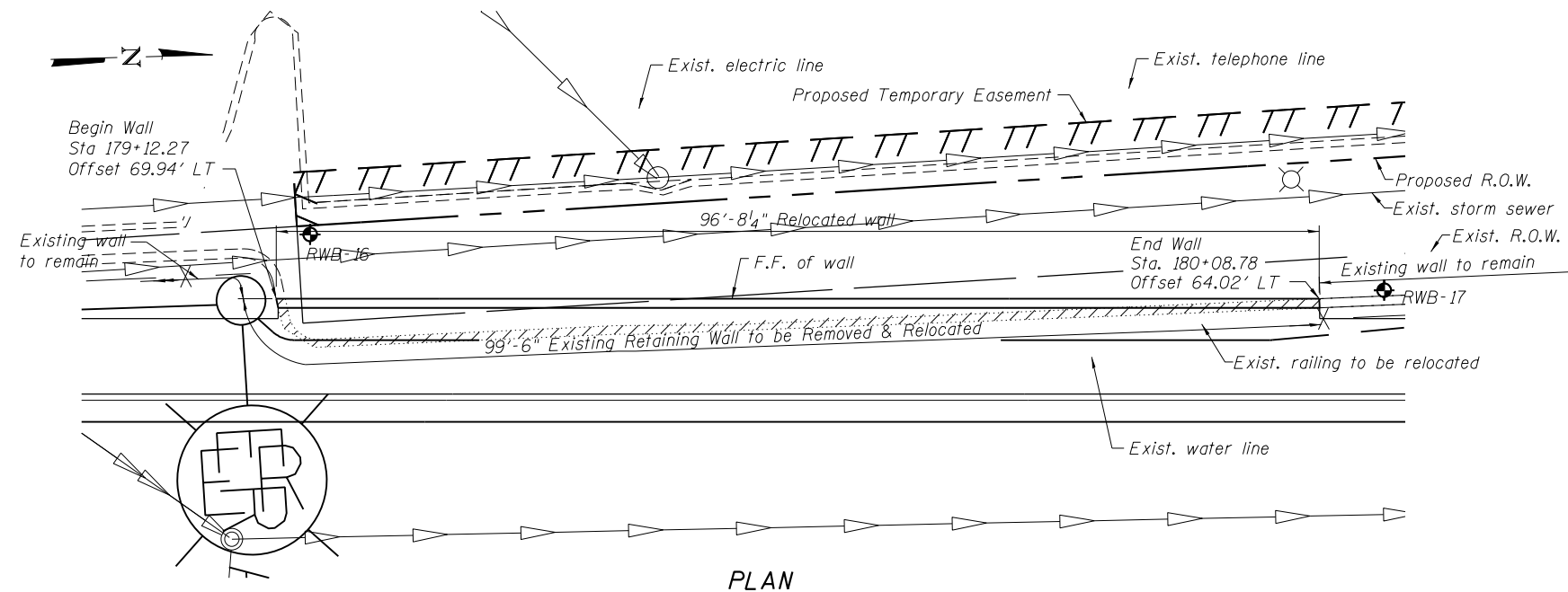


ELEVATION
(Looking east at F.F. wall)

EXISTING WAL SECTION



PLAN

EXISTING RAILING

Existing wall and railing details are taken from existing plans and may not reflect actual field conditions.

LEGEND

- ◆ Soil Boring
- F.F. Front Face
- B.F. Back Face
- E.F. Each Face

BILL OF MATERIAL

ITEM	UNIT	QUANTITY
Remove and Re-Erect Segmental Block Retaining Wall	Sq. Ft.	633

100 S. WACKER DR.
 SUITE 600
 CHICAGO, IL 60606
 TEL (312) 935-1000
 FAX (312) 935-4998
URS

FILE NAME = D:\6061-SHT-Wall_01-1.dgn	USER NAME = Anthony.Plutz	DESIGNED - PMH	REVISD -	STATE OF ILLINOIS DEPARTMENT OF TRANSPORTATION	RETAINING WALL NO. 1 - S.N. 016-2028 STA. 179 + 12.27 TO 180 + 08.78	F.A.P. RTE. 330	SECTION 103R-4	COUNTY COOK	TOTAL SHEETS 877	SHEET NO. 479	
	PLOT SCALE = 16.0000' / in.	DRAWN - PMH	REVISD -			SHEET NO. 3 OF 42 SHEETS		CONTRACT NO. 60M61		ILLINOIS FED. AID PROJECT	
	PLOT DATE = 3/14/2013	CHECKED - JCE	REVISD -								