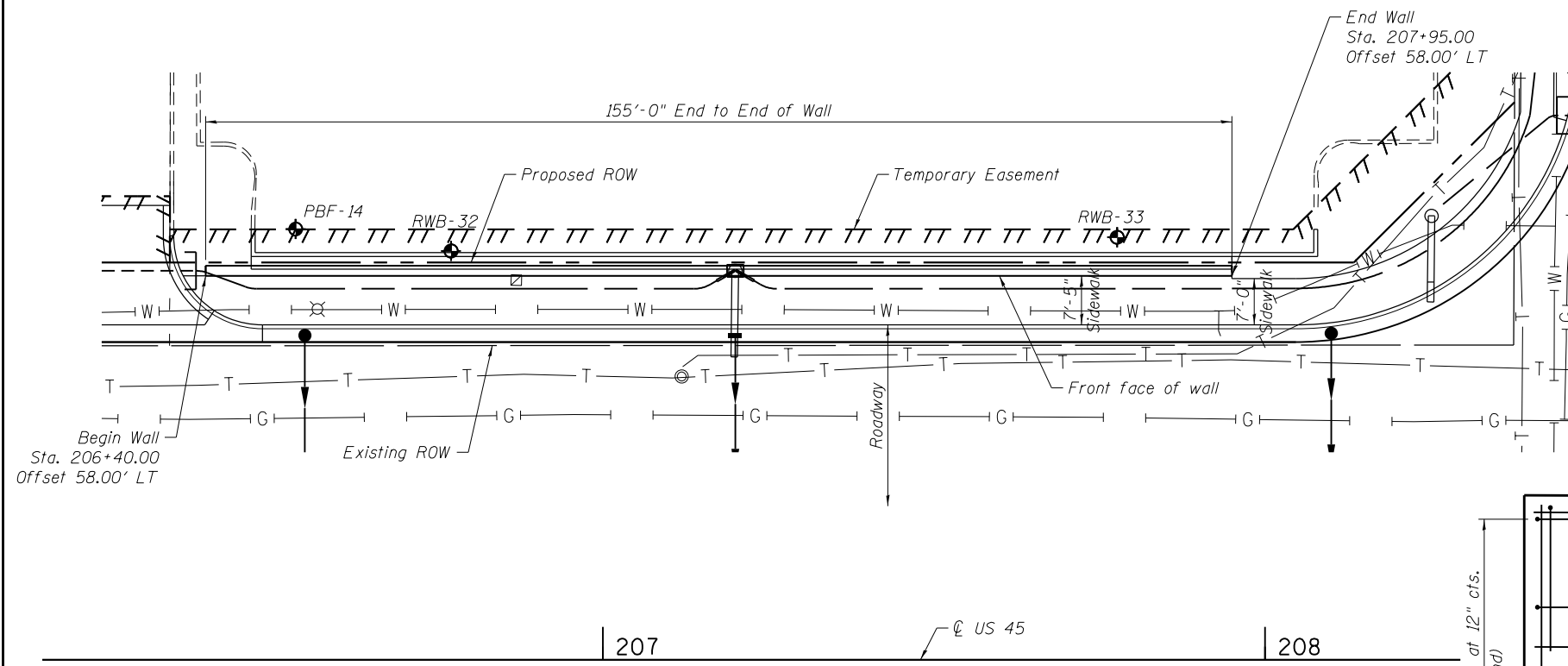
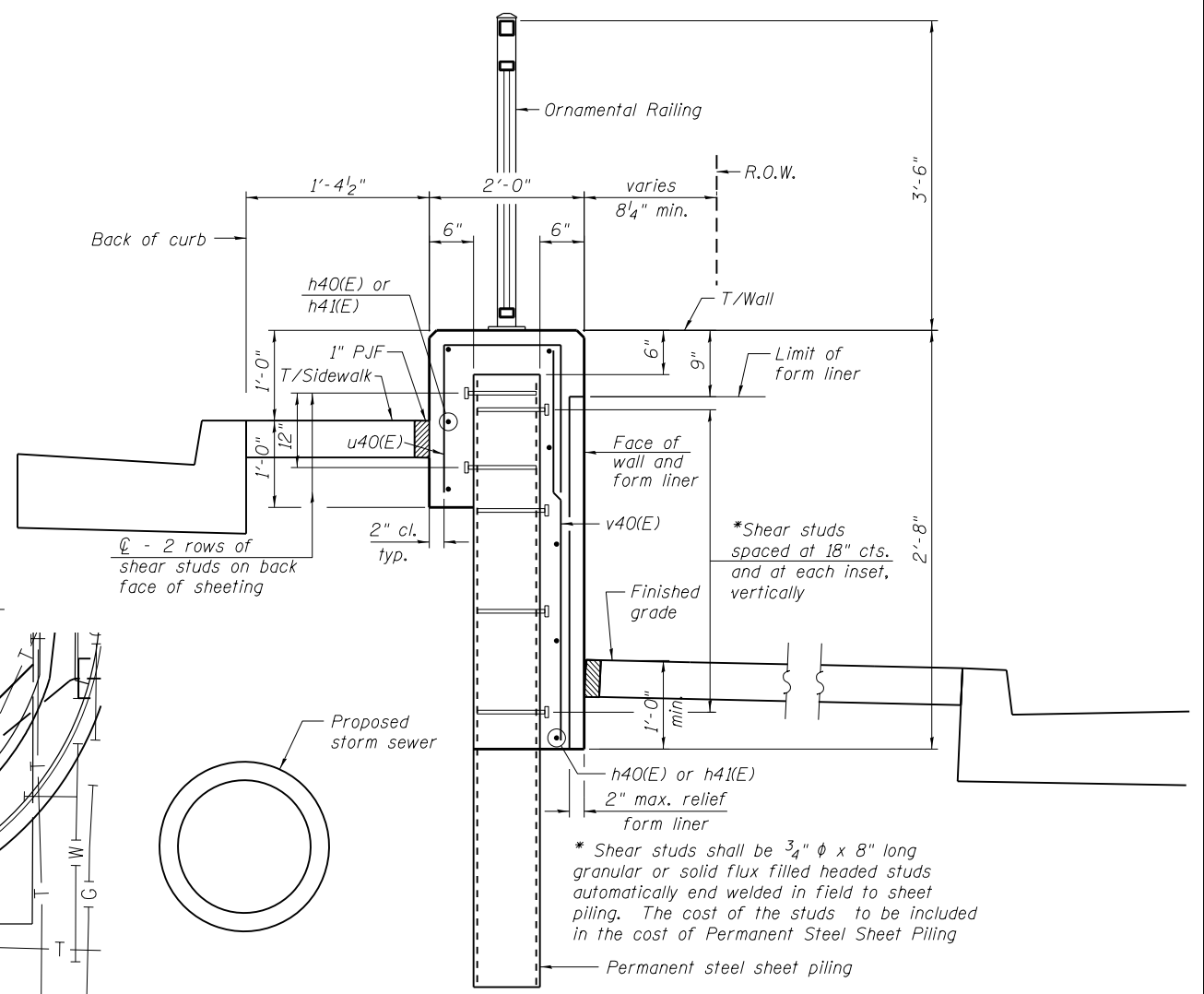


ELEVATION
(Sta. 206+40 to 207+95)



PLAN



TYPICAL SECTION THROUGH WALL

LEGEND

- - Panel No.
- ⊕ - Soil Boring
- F.F. - Front Face
- B.F. - Back Face
- E.F. - Each Face

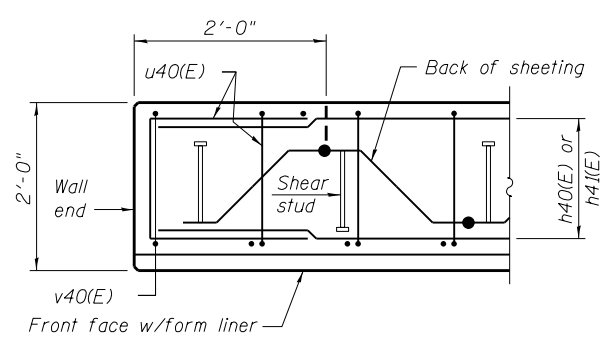
NOTES:

Wall stations, offsets and dimensions are measured at front face of wall.
 All exposed corners shall have a 1" chamfer.
 For General Notes, Wall Key Plan and US 45 Profile, see Sheet 1.
 For Typical Wall Details and Ornamental Railing see Sheet 2.

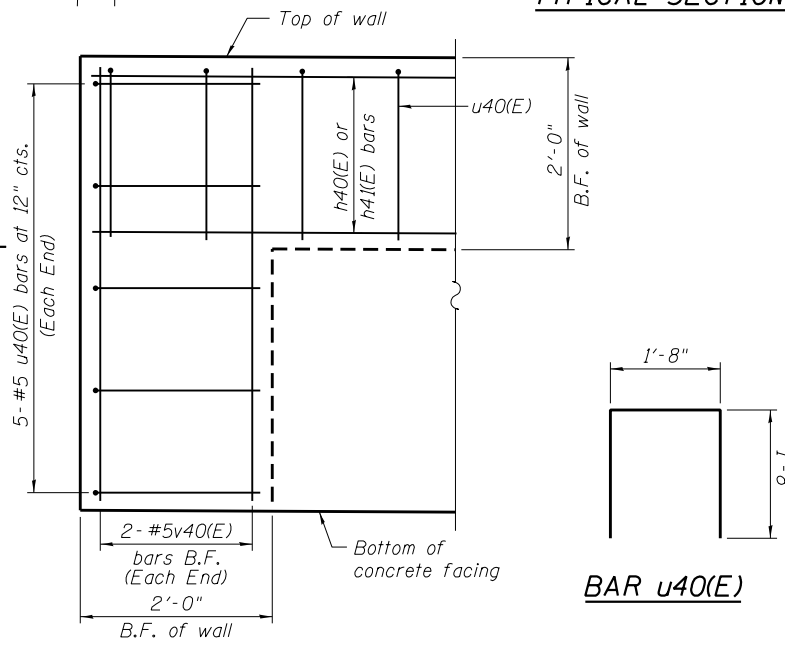
BILL OF MATERIAL

Bar	No.	Size	Length	Shape
h40(E)	24	#5	32'-11"	—
h41(E)	16	#5	29'-8"	—
u40(E)	163	#5	4'-7"	⊏
v40(E)	157	#5	4'-5"	—
Structure Excavation			Cu. Yd.	23
Concrete Structures			Cu. Yd.	16.7
Form Liner Textured Surface			Sq. Ft.	298
Reinforcement Bars, Epoxy Coated			Pound	2,830
Permanent Sheet Piling			Sq. Ft.	2,837
Ornamental Railing			Foot	155

Bars indicated thus 3x2-#5 etc. indicates 3 lines of bars with 2 lengths per line.



PLAN AT END OF WALL



TYPICAL END CAP DETAIL
(v(E) bars in F.F. not shown for clarity)

BAR u40(E)

BAR LAPS

Basic Lap: #5 bars - 2'-7"
 Top Bar Lap: #5 bars - 2'-11"

100 S. WACKER DR.
 CHICAGO, IL 60606
 TEL (312) 939-1000
 FAX (312) 939-4998
URS