

**BILL OF MATERIAL**

Bar	No.	Size	Length	Shape
d60(E)	10	#5	5'-6"	
h60(E)	47	#5	32'-11"	
h61(E)	29	#5	29'-8"	
v60(E)	92	#6	8'-11"	
v61(E)	46	#6	9'-1"	
v62(E)	46	#6	9'-3"	
v63(E)	144	#6	9'-6"	
v64(E)	46	#6	8'-8"	
t60(E)	322	#6	8'-2"	
w60(E)	60	#5	32'-7"	
w61(E)	20	#5	31'-3"	
w62(E)	10	#5	4'-8"	
Granular Embankment, Special		Cu. Yd.	141	
Structure Excavation		Cu. Yd.	478	
Removal and Disposal of Unsuitable Material for Structures		Cu. Yd.	134	
Concrete Structures		Cu. Yd.	132.5	
Form Liner Textured Surface		Sq. Ft.	1,122	
Reinforcement Bars, Epoxy Coated		Pound	14,420	
Geocomposite Wall Drain		Sq. Yd.	164	
Granular Backfill for Structures		Cu. Yd.	219	
Ornamental Railing		Foot	240	
Pipe Underdrains for Structures, 4"		Foot	240	

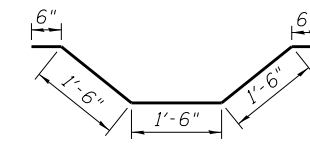
Bars indicated thus 10x6-#5 etc. indicates 10 lines of bars with 6 lengths per line.

**NOTES:**

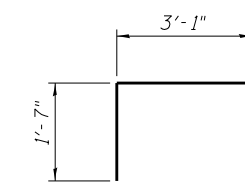
Wall stations, offsets and dimensions are measured at front face of wall. All exposed corners shall have a 1" chamfer. For General Notes, Wall Key Plan and US 45 Profile, see Sheet 1. For Typical Wall Details and Ornamental Railing see Sheet 2.

**BAR LAPS**

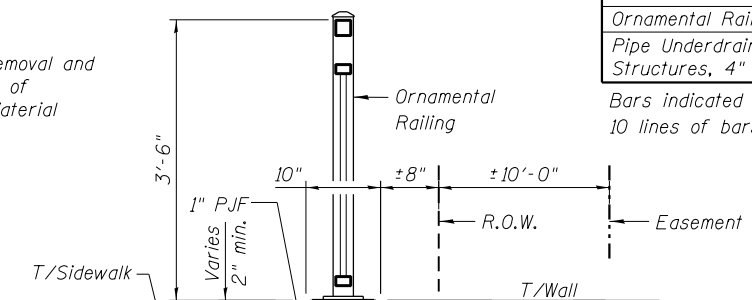
Basic Lap #5 bars - 2'-7"  
Top Bar Lap #5 bars - 2'-11"



**BAR d60(E)**



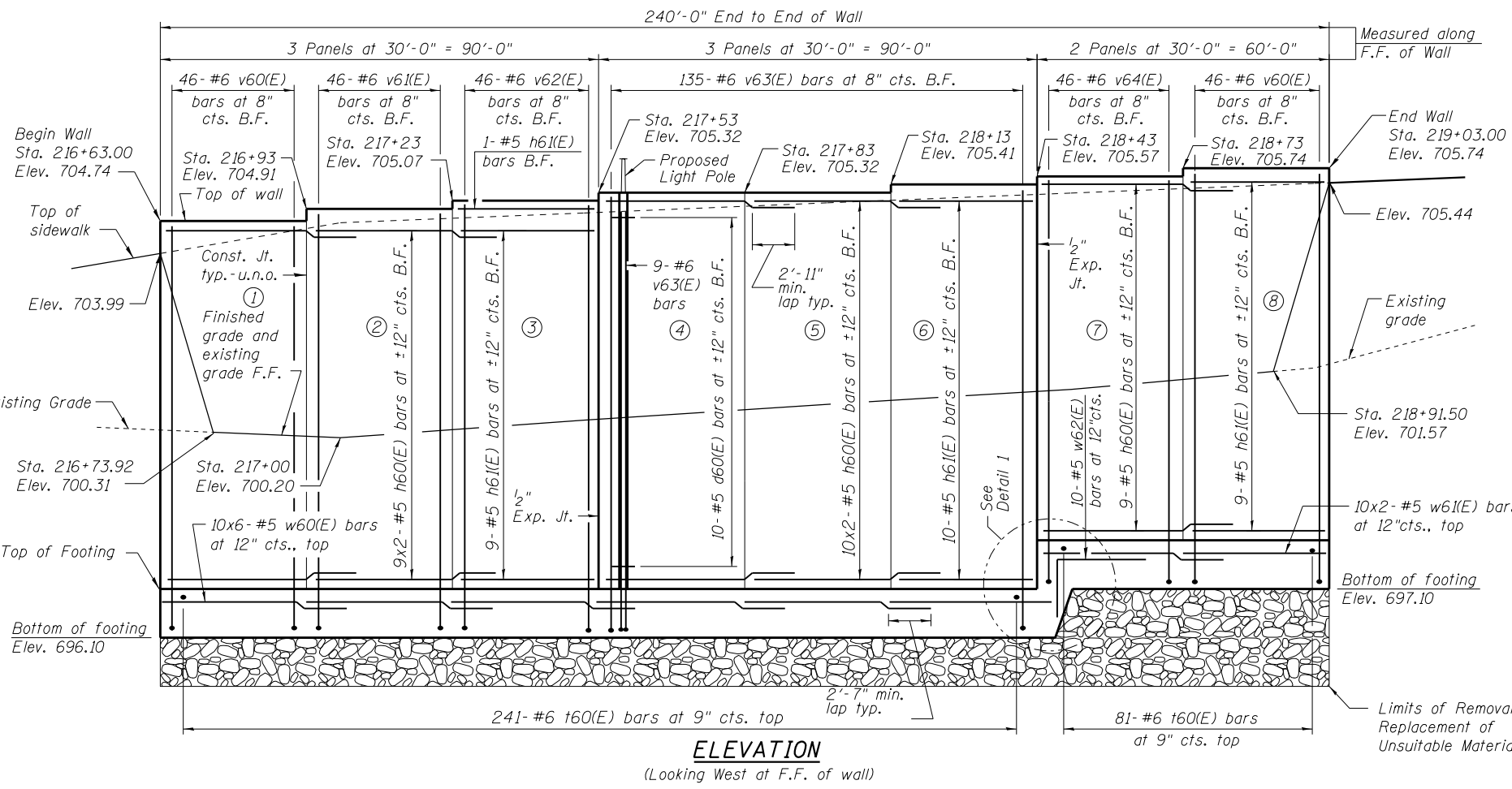
**BAR w62(E)**



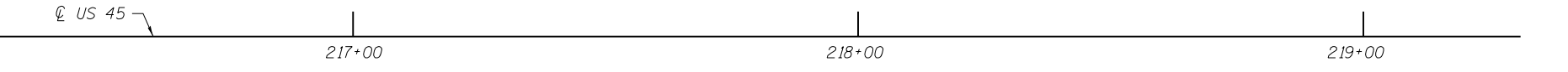
**BARS v60(E), v61(E), v62(E), v63(E) & v64(E)**

**A DIMENSIONS**

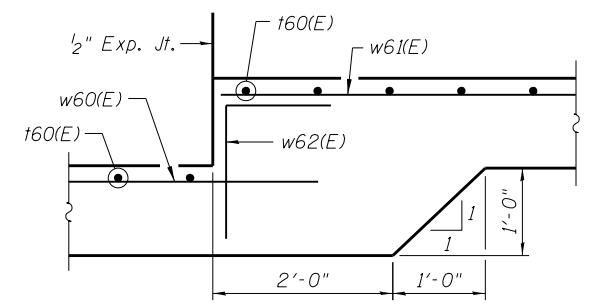
Bar	A
v60(E)	8'-3"
v61(E)	8'-5"
v62(E)	8'-7"
v63(E)	8'-10"
v64(E)	8'-0"



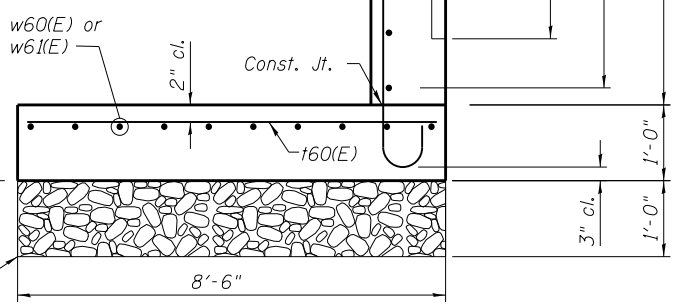
**ELEVATION**  
(Looking West at F.F. of wall)



**PLAN**



**DETAIL 1**



**TYPICAL SECTION THRU WALL**

- LEGEND**
- ① - Panel number
  - ◆ - Soil Boring
  - F.F. - Front Face
  - B.F. - Back Face
  - E.F. - Each Face

Limits of "Removal and Disposal of Unsuitable Material for Structures." Backfill with "Granular Embankment, Special" (compacted CA-6".

URS  
100 S. WACKER DR.  
CHICAGO, IL 60606  
TEL (312) 939-1000  
FAX (312) 939-4998

FILE NAME = D160M61-SHT-Wall_06-1.dgn	USER NAME = Anthony.Plutz	DESIGNED -	REVISD -	<b>STATE OF ILLINOIS DEPARTMENT OF TRANSPORTATION</b>	<b>RETAINING WALL NO. 6 - S.N. 016-2032 STA. 216+63.00 TO 219+03.00</b>	F.A.P. R.T.E. = 330	SECTION = 103R-4	COUNTY = COOK	TOTAL SHEETS = 877	SHEET NO. = 482	
	PLOT SCALE = 3/20" = 1' in.	DRAWN -	REVISD -			SHEET NO. 6 OF 42 SHEETS					
	PLOT DATE = 3/14/2013	CHECKED -	REVISD -			CONTRACT NO. 60M61					
						ILLINOIS FED. AID PROJECT					