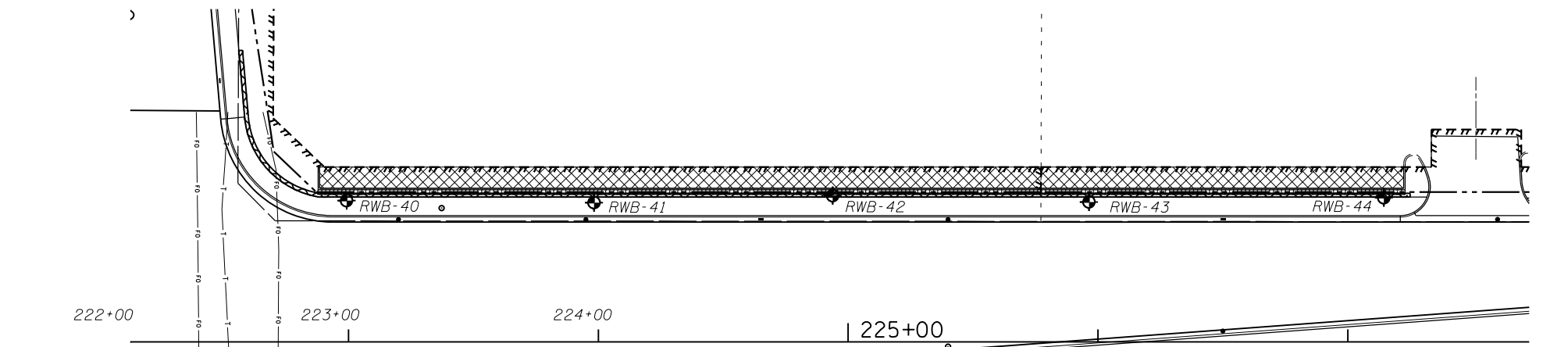
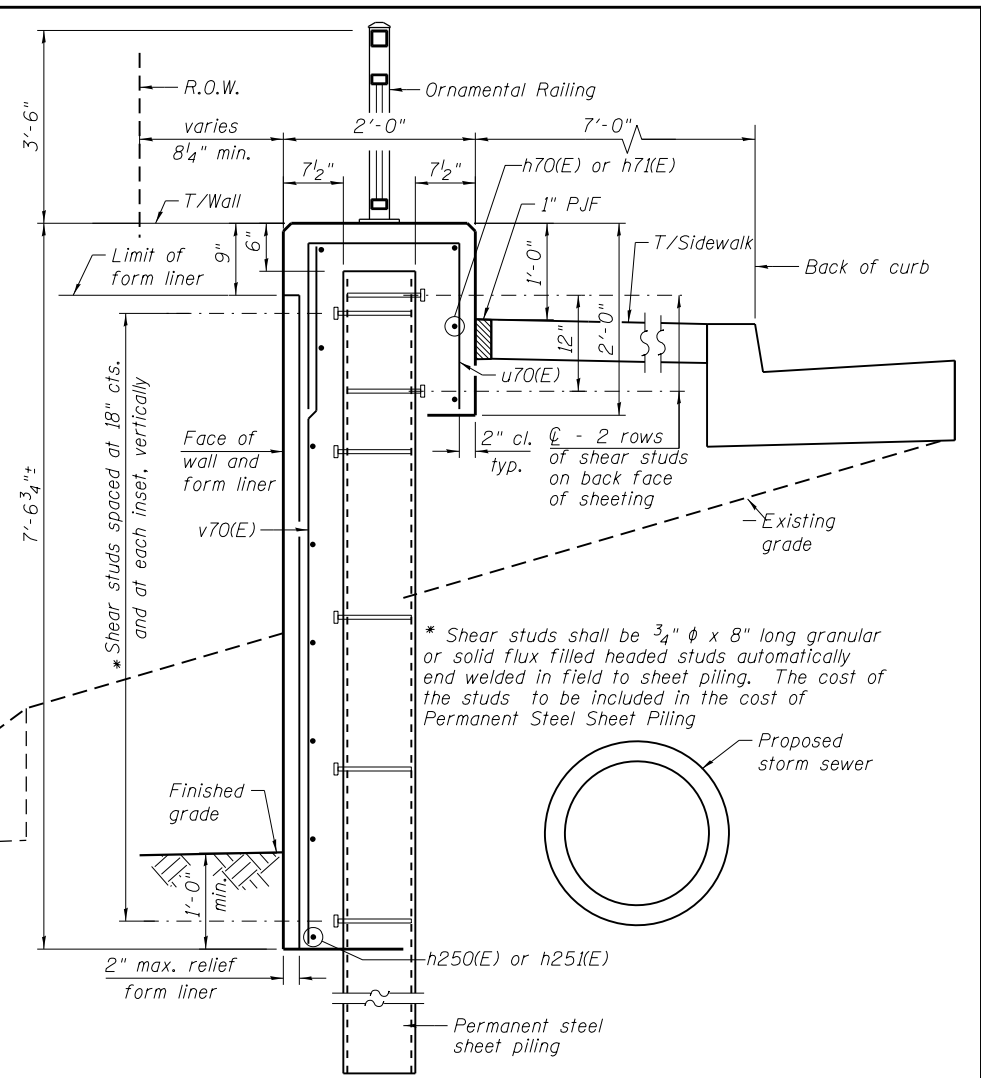


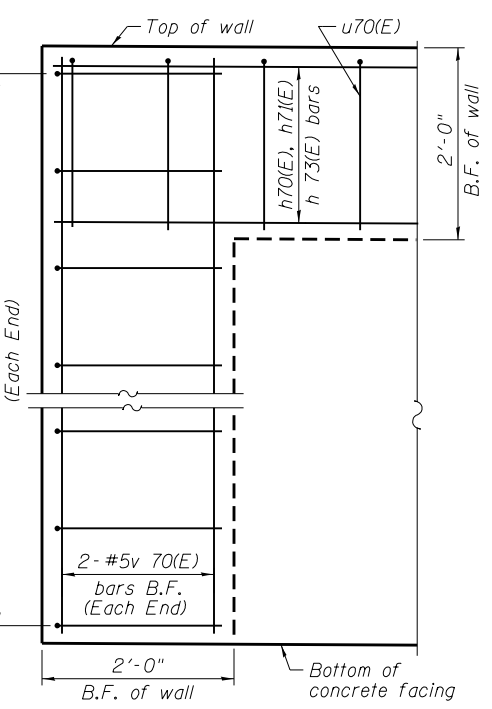
ELEVATION



PLAN



TYPICAL SECTION THROUGH WALL



TYPICAL END CAP DETAIL
(v(E) bars in F.F. not shown for clarity)

BILL OF MATERIAL

Bar	No.	Size	Length	
d70(E)	16	#5	5'-6"	
d71(E)	14	#5	8'-3"	
h70(E)	80	#5	32'-11"	
h71(E)	20	#5	29'-8"	
h72(E)	20	#5	26'-0"	
h73(E)	20	#5	24'-4"	
v70(E)	468	#5	6'-1"	
u70(E)	436	#5	4'-7"	
Structure Excavation			Cu. Yd.	154
Concrete Structures			Cu. Yd.	169.1
Form Liner Textured Surface			Sq. Ft.	2,952
Reinforcement Bars, Epoxy Coated			Pound	9,690
Permanent Sheet Piling			Foot	5,532
Ornamental Railing			Foot	511

Bars indicated thus 3x2-#5 h110(E) etc. indicates 3 lines of bars with 2 lengths per line.

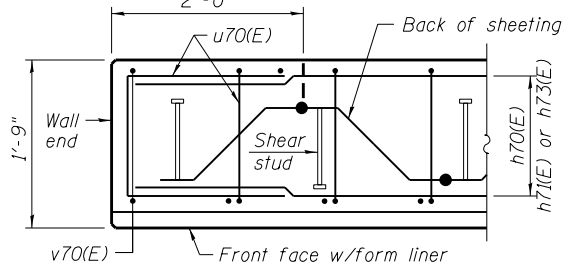
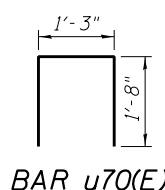
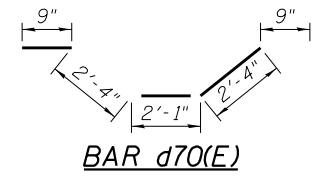
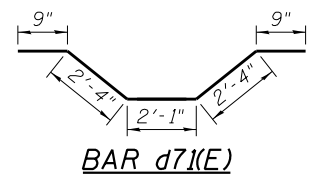
NOTES:
 Wall stations, offsets and dimensions are measured at front face of wall.
 All exposed corners shall have a 1" chamfer.
 For General Notes, Wall Key Plan and US 45 Profile, see Sheet 1.
 For Typical Wall Details and Ornamental Railing see Sheet 2.
 The details for the concrete cap, reinforcement and required number of shear stud connectors are based on Section AZ 18 sheet piling. If the Contractor chooses to use any other section, then the Contractor shall submit revised concrete cap and reinforcement configuration for approval by the Engineer. Such changes shall not be cause for additional compensation.

LEGEND

- - Panel No.
- ⊕ - Soil Boring
- F.F. - Front Face
- B.F. - Back Face
- E.F. - Each Face

BAR LAPS

- Basic Lap
- #5 bars - 2'-7"
- Top Bar Lap
- #5 bars - 2'-11"



PLAN AT END OF WALL

100 S. WACKER DR.
 100 S/W/TE 600
 CHICAGO, IL 60606
 TEL (312) 939-1000
 FAX (312) 939-4998

URS

FILE NAME =	USER NAME = Anthony.Plutz	DESIGNED -	REVISED -
D160M61-SHT-Wall_07-1.dgn		CHECKED -	REVISED -
	PLOT SCALE = 60.0000' / in.	DRAWN -	REVISED -
	PLOT DATE = 3/14/2013	CHECKED -	REVISED -

**STATE OF ILLINOIS
 DEPARTMENT OF TRANSPORTATION**

**RETAINING WALL NO. 7 - S.N. 016-2033
 STA. 222+56.06 TO 227+25.00**

SHEET NO. 7 OF 42 SHEETS

F.A.P. RTE.	SECTION	COUNTY	TOTAL SHEETS	SHEET NO.
330	103R-4	COOK	877	483
CONTRACT NO. 60M61			ILLINOIS FED. AID PROJECT	