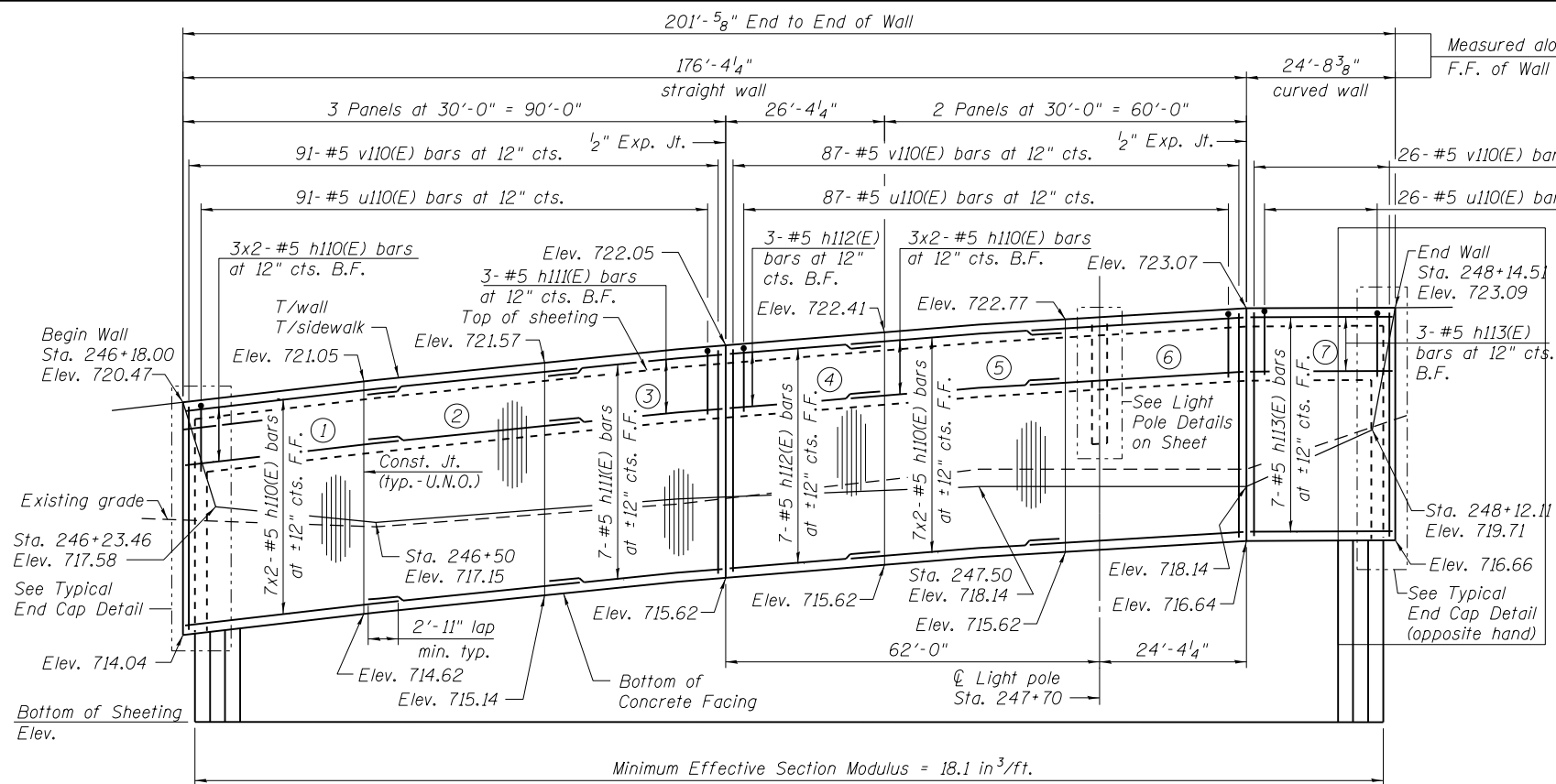


BILL OF MATERIAL

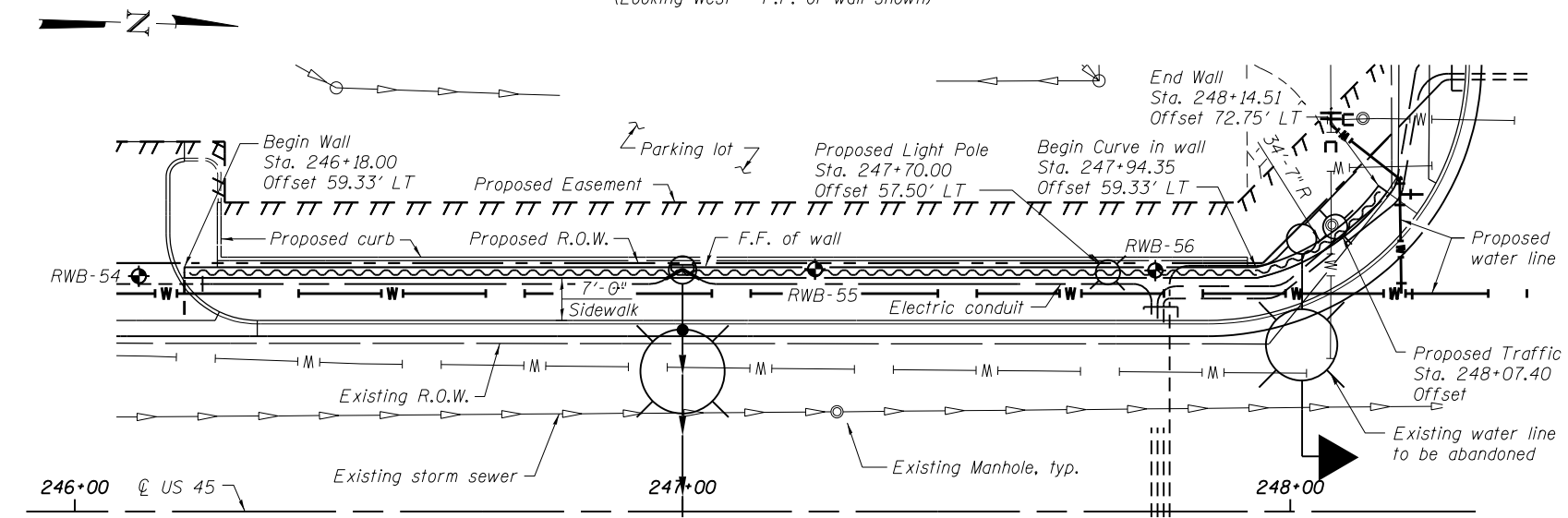
Bar	No.	Size	Length	Shape
d110(E)	8	#5	5'-6"	
d111(E)	7	#5	8'-3"	
h110(E)	40	#5	32'-11"	
h111(E)	10	#5	29'-8"	
h112(E)	10	#5	26'-0"	
h113(E)	10	#5	24'-4"	
v110(E)	234	#5	6'-1"	
u110(E)	218	#5	4'-7"	
Structure Excavation		Cu. Yd.	62	
Concrete Structures		Cu. Yd.	67.7	
Form Liner Textured Surface		Sq. Ft.	1,181	
Reinforcement Bars, Epoxy Coated		Pound	4,850	
Permanent Sheet Piling		Foot	2,213	
Ornamental Railing		Foot	202	

Bars indicated thus 3x2-#5 h110(E) etc. indicates 3 lines of bars with 2 lengths per line.

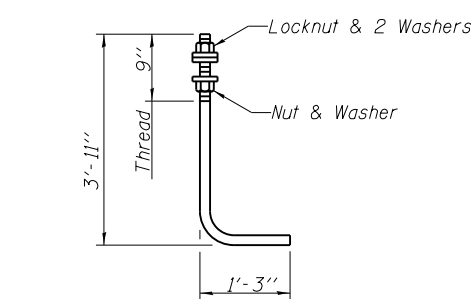


ELEVATION

(Looking West - F.F. of wall shown)



PLAN



ANCHOR ROD

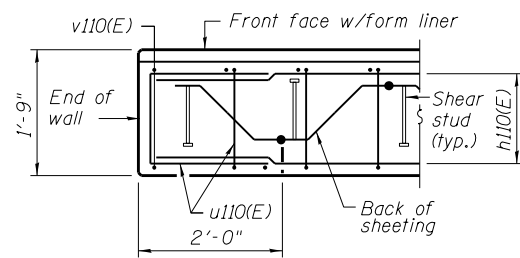
Diameter as specified for light poles. (ASTM F 1554 Grade 105)

LEGEND

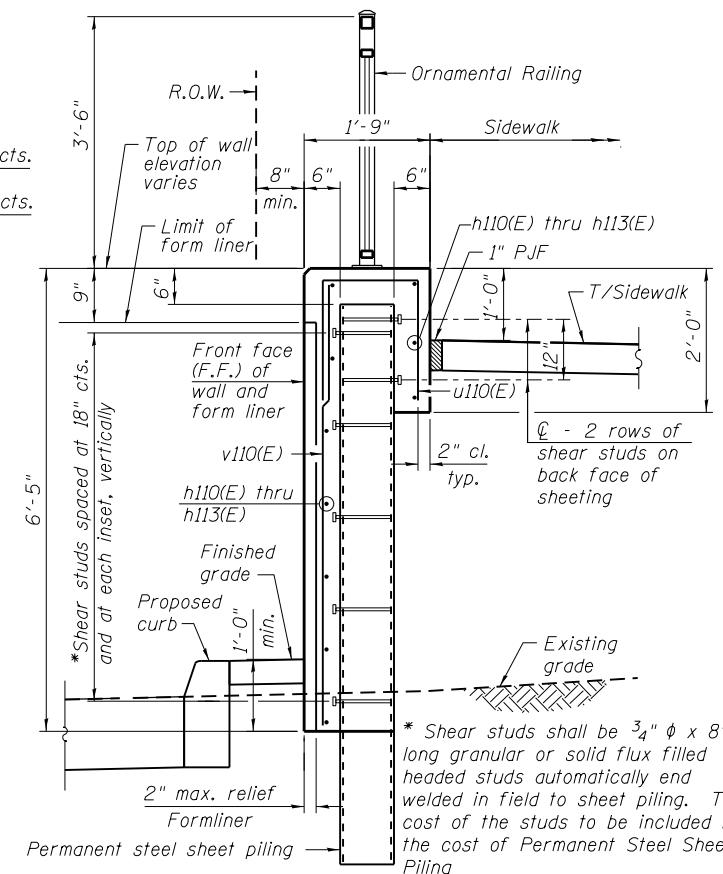
- ① - Panel No.
- ⊕ - Soil Boring
- F.F. - Front Face
- B.F. - Back Face
- E.F. - Each Face

BAR LAPS

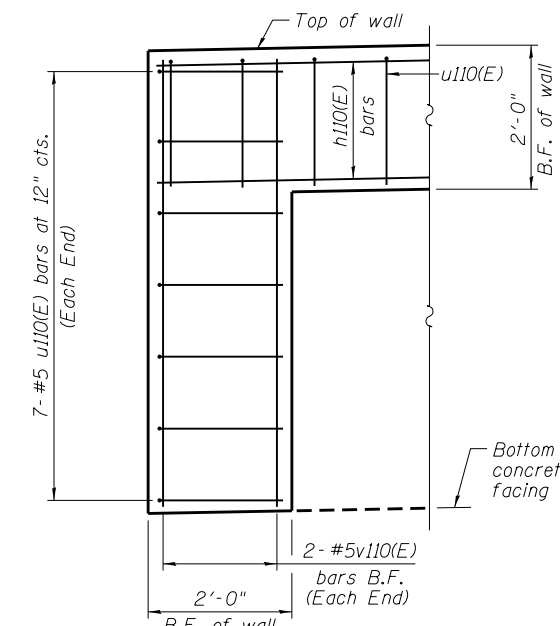
Basic Lap #5 bars - 2'-7"
Top Bar Lap #5 bars - 2'-11"



PLAN AT END OF WALL

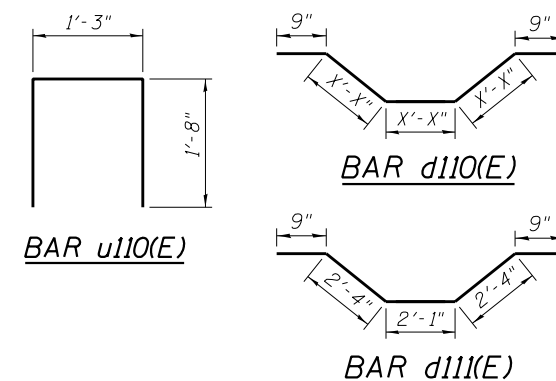


TYPICAL SECTION THROUGH WALL



TYPICAL END CAP DETAIL

(v110(E) bars in F.F. not shown for clarity)



NOTES:

- Wall stations, offsets and dimensions are measured at front face of wall.
- All exposed corners shall have a 1" chamfer.
- For General Notes, Wall Key Plan and US 45 Profile, see Sheet 1.
- For Typical Wall Details and Ornamental Railing see Sheet 2.
- The details for the concrete cap, reinforcement and required number of shear stud connectors are based on Section AZ 18 sheet piling. If the Contractor chooses to use any other section, then the Contractor shall submit revised concrete cap and reinforcement configuration for approval by the Engineer. Such changes shall not be cause for additional compensation.

FILE NAME = D160M61-SHT-Wall_11-1.dgn	USER NAME = Anthony.Plutz	DESIGNED - SAT	REVISED -
PLOT SCALE = 29.1667' / in.	DRAWN - AMV	CHECKED - MJL	REVISED -
PLOT DATE = 3/14/2013	CHECKED - MJL	REVISIONS	REVISED -

F.A.P. RTE. 330	SECTION 103R-4	COUNTY COOK	TOTAL SHEETS 877	SHEET NO. 487
CONTRACT NO. 60M61			ILLINOIS FED. AID PROJECT	