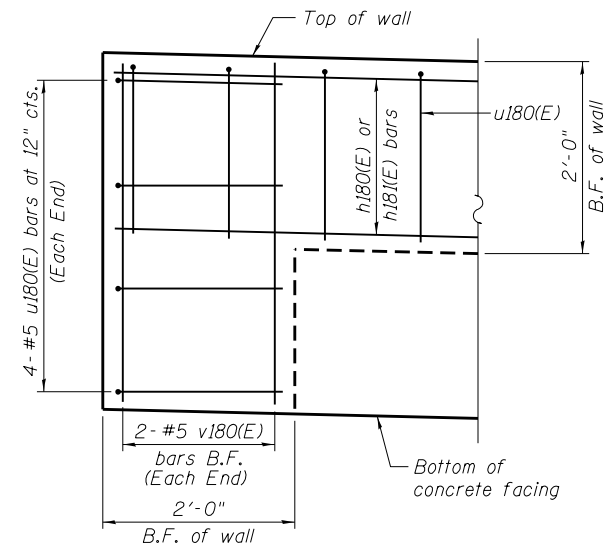


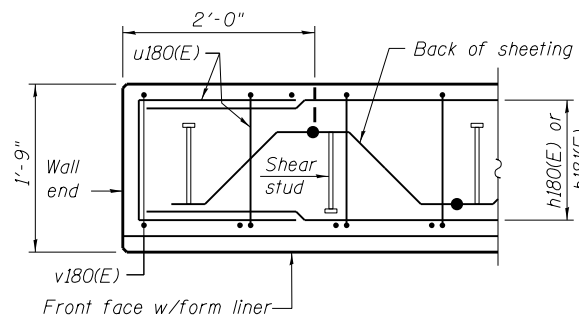
ELEVATION

(Looking West at F.F. of wall)

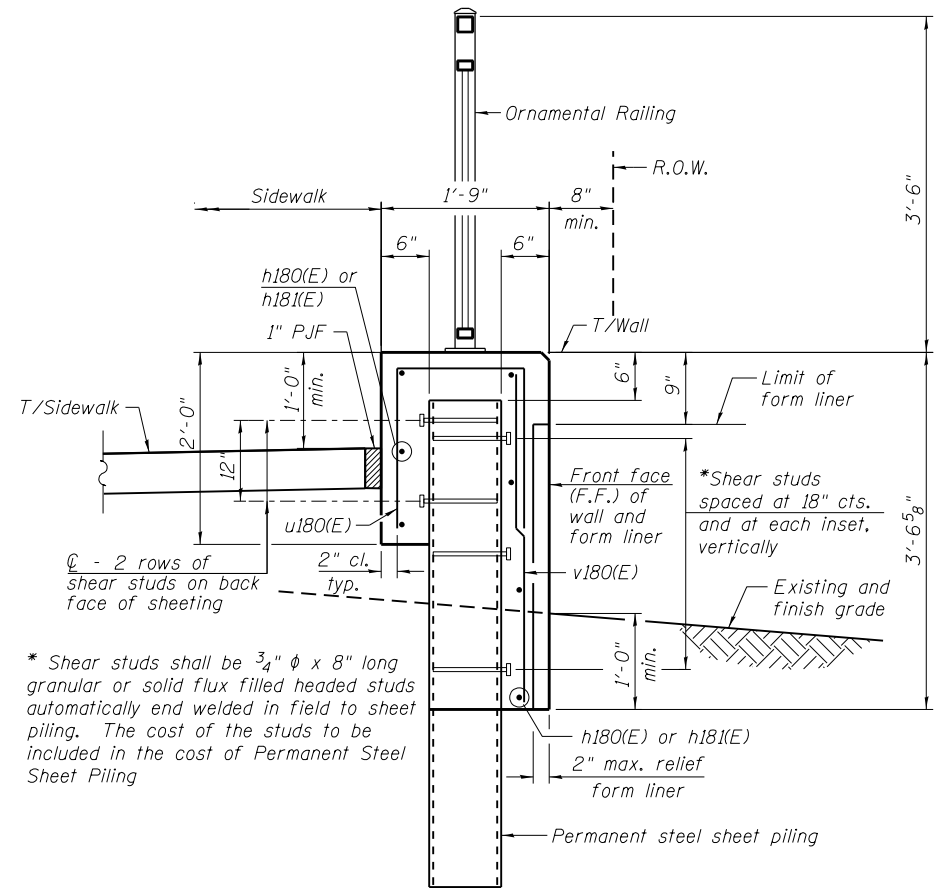


TYPICAL END CAP DETAIL

(v180(E) bars in F.F. not shown for clarity)

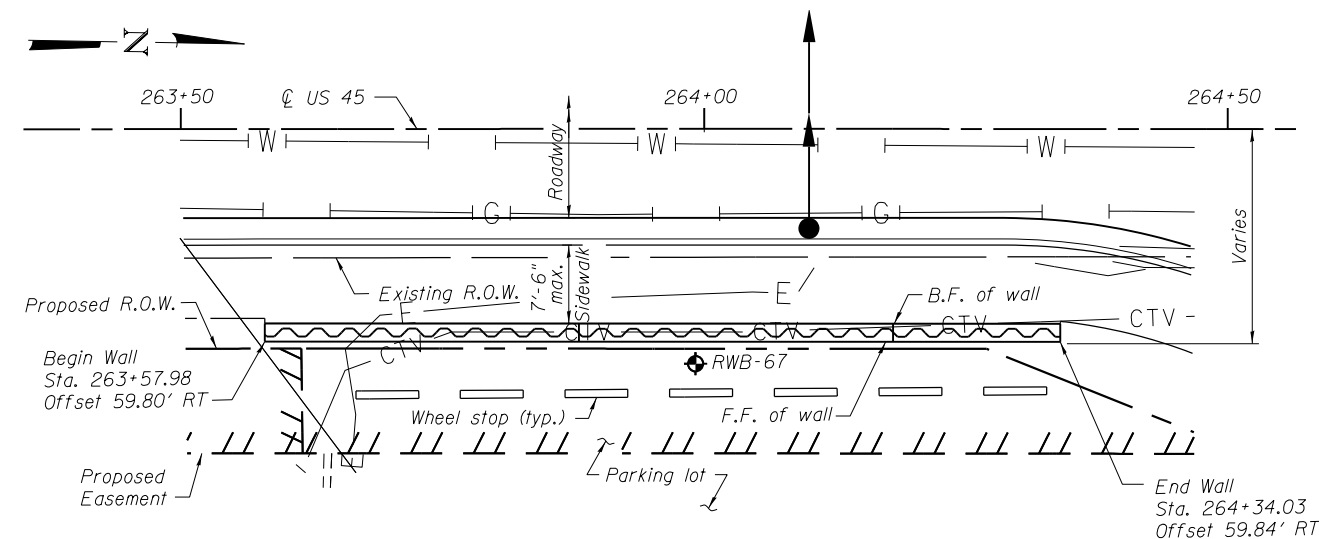


PLAN AT END OF WALL



TYPICAL SECTION THROUGH WALL

* Shear studs shall be 3/4" φ x 8" long granular or solid flux filled headed studs automatically end welded in field to sheet piling. The cost of the studs to be included in the cost of Permanent Steel Sheet Piling



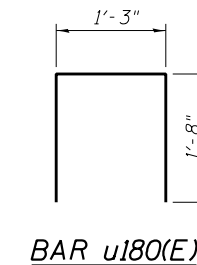
PLAN

LEGEND

- ① - Panel No.
- ◆ - Soil Boring
- F.F. - Front Face
- B.F. - Back Face
- E.F. - Each Face

NOTES:

Wall stations, offsets and dimensions are measured at front face of wall.
 All exposed corners shall have a 1" chamfer.
 For General Notes, Wall Key Plan and US 45 Profile, see Sheet 1.
 For Typical Wall Details and Ornamental Railing see Sheet 2.
 The details for the concrete cap, reinforcement and required number of shear stud connectors are based on Section AZ 18 sheet piling. If the Contractor chooses to use any other section, then the Contractor shall submit revised concrete cap and reinforcement configuration for approval by the Engineer. Such changes shall not be cause for additional compensation.



BAR LAPS

Basic Lap #5 bars - 2'-7"
 Top Bar Lap #5 bars - 2'-11"

BILL OF MATERIAL

Bar	No.	Size	Length	Shape
h180(E)	14	#5	32'-11"	—
h181(E)	7	#5	15'-6"	—
u180(E)	85	#5	4'-7"	□
v180(E)	81	#5	3'-4"	—
Structure Excavation		Cu. Yd.	24	
Concrete Structures		Cu. Yd.	17.5	
Form Liner Textured Surface		Sq. Ft.	213	
Reinforcement Bars, Epoxy Coated		Pound	1290	
Permanent Sheet Piling		Sq. Ft.	1499	
Ornamental Railing		Foot	76	

Bars indicated thus 4x2- #5 etc. indicates 4 lines of bars with 2 lengths per line.

FILE NAME = D160M61-SHT-Wall_18-1.dgn	USER NAME = Anthony.Plutz	DESIGNED - SAT	REVISED -
		CHECKED - MJL	REVISED -
		DRAWN - AMV	REVISED -
		CHECKED - MJL	REVISED -

F.A.P. RTE.	SECTION	COUNTY	TOTAL SHEETS	SHEET NO.
330	103R-4	COOK	877	493
ILLINOIS FED. AID PROJECT				CONTRACT NO. 60M61