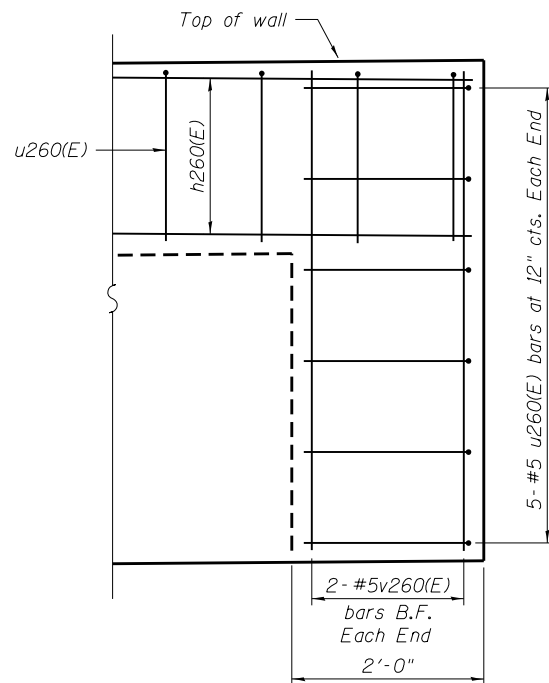
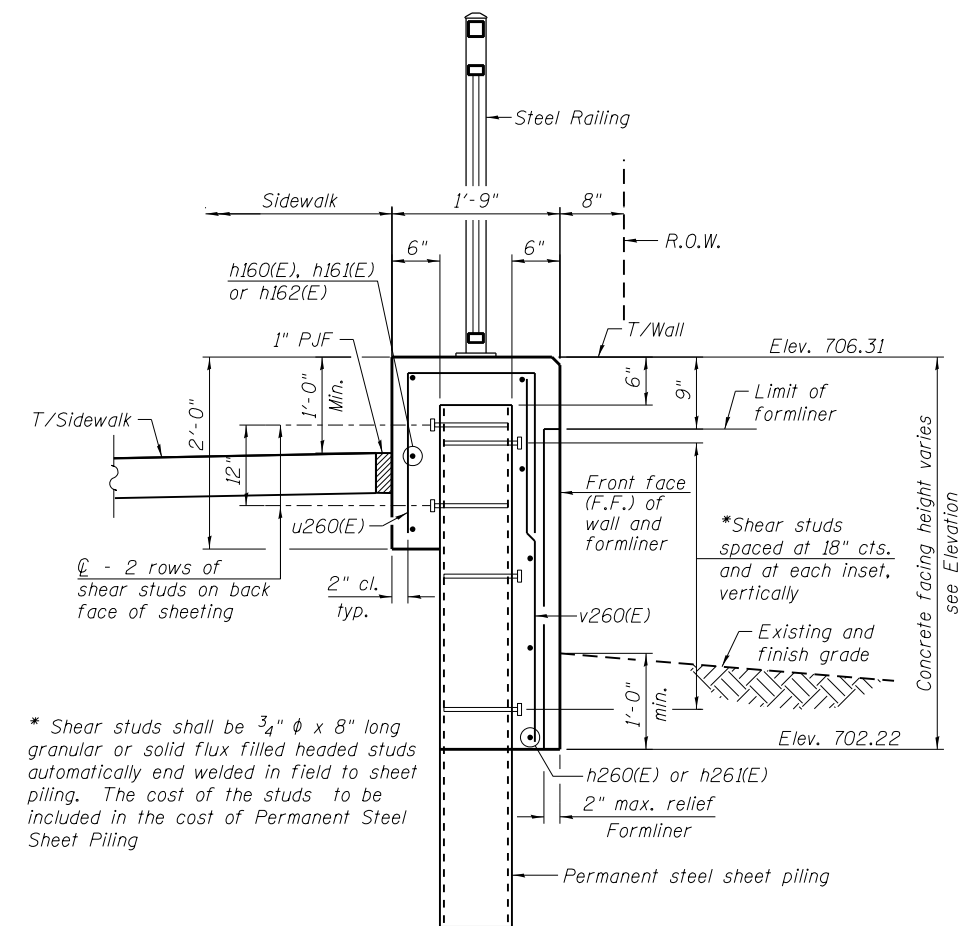


ELEVATION

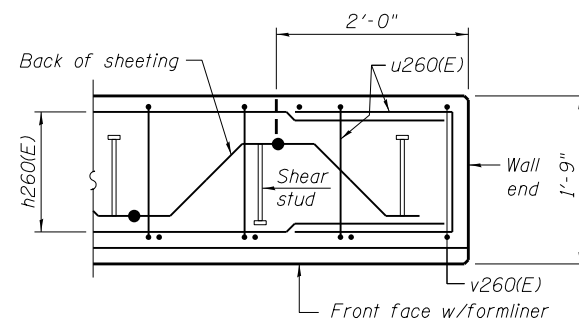


TYPICAL END CAP DETAIL
(v260(E) bars in F.F. not shown for clarity)

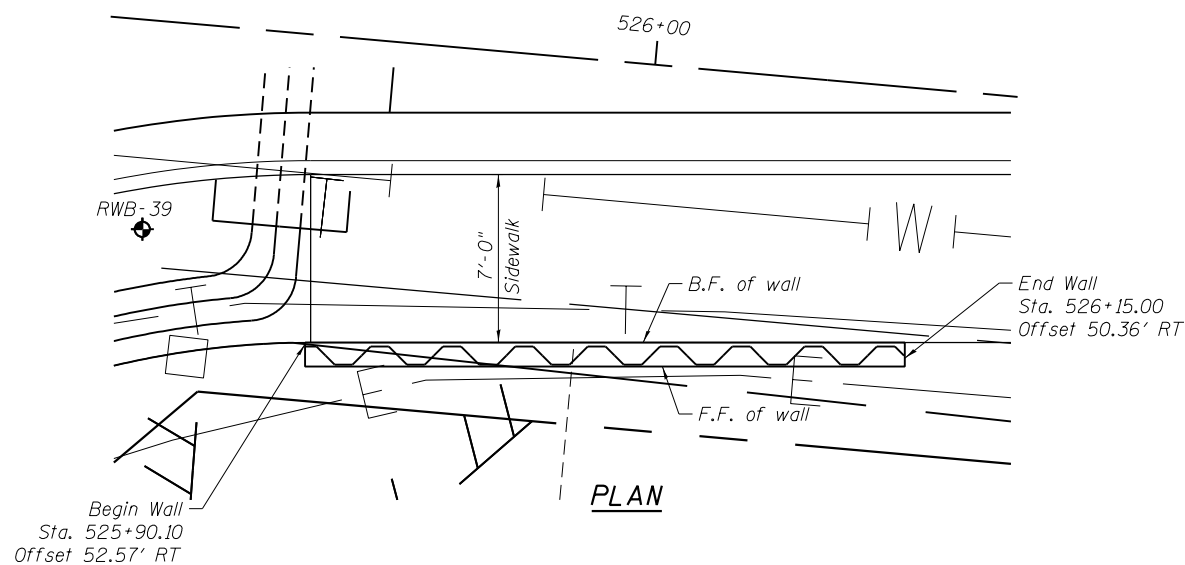


TYPICAL SECTION THROUGH WALL

* Shear studs shall be 3/4" φ x 8" long granular or solid flux filled headed studs automatically end welded in field to sheet piling. The cost of the studs to be included in the cost of Permanent Steel Sheet Piling



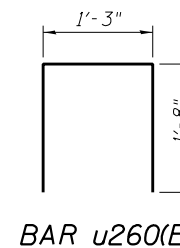
PLAN AT END OF WALL



PLAN

NOTES:

Wall stations, offsets and dimensions are measured at front face of wall.
All exposed corners shall have a 1" chamfer.
For General Notes, Wall Key Plan and US 45 Profile, see Sheet 1.
For Typical Wall Details and Ornamental Railing see Sheet 2.
The details for the concrete cap, reinforcement and required number of shear stud connectors are based on Section AZ 18 sheet piling. If the Contractor chooses to use any other section, then the Contractor shall submit revised concrete cap and reinforcement configuration for approval by the Engineer. Such changes shall not be cause for additional compensation.



BAR u260(E)

BILL OF MATERIAL

Bar	No.	Size	Length	Shape
h260(E)	4	#5	32'-11"	—
h261(E)	4	#5	21'-4"	—
u260(E)	32	#5	4'-7"	□
v260(E)	29	#5	4'-3"	—
Structure Excavation			Cu. Yd.	4
Concrete Structures			Cu. Yd.	7.5
Form Liner Textured Surface			Sq. Ft.	93
Reinforcement Bars, Epoxy Coated			Pound	510
Permanent Sheet Piling			Sq. Ft.	533
Ornamental Railing			Foot	25

LEGEND

- ① - Panel No.
- ⊕ - Soil Boring
- F.F. - Front Face
- B.F. - Back Face
- E.F. - Each Face

BAR LAPS

- Basic Lap
#5 bars - 2'-7"
- Top Bar Lap
#5 bars - 2'-11"

100 S. WACKER DR.
 SUITE 600
 CHICAGO, IL 60606
 TEL (312) 939-1000
 FAX (312) 939-4998
URS