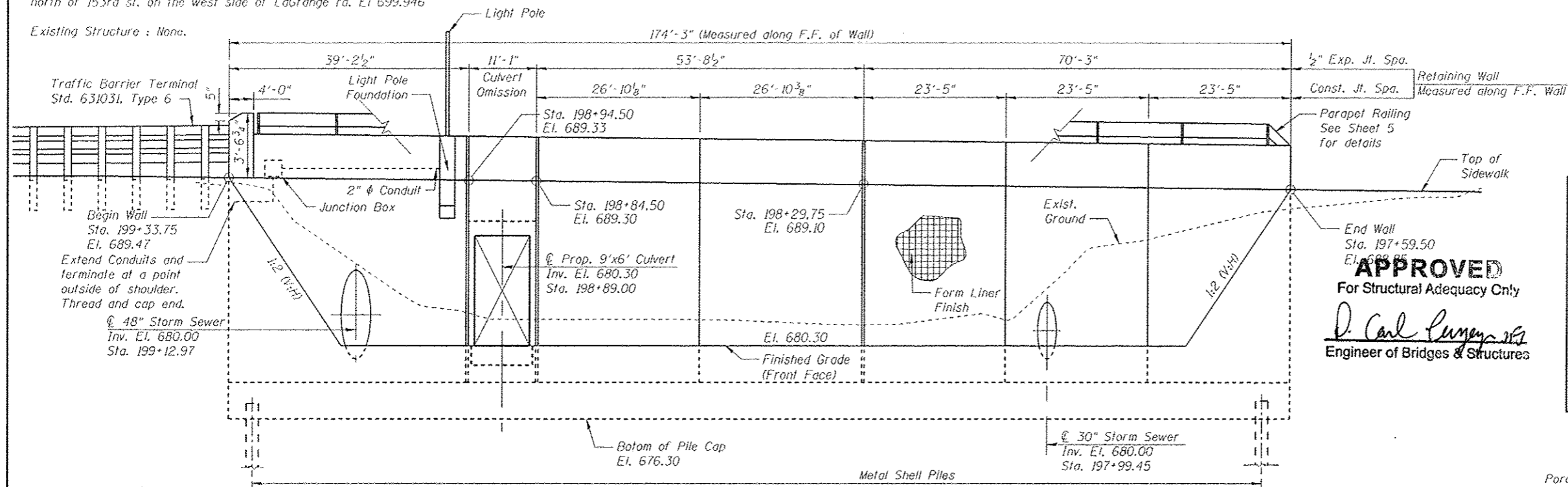
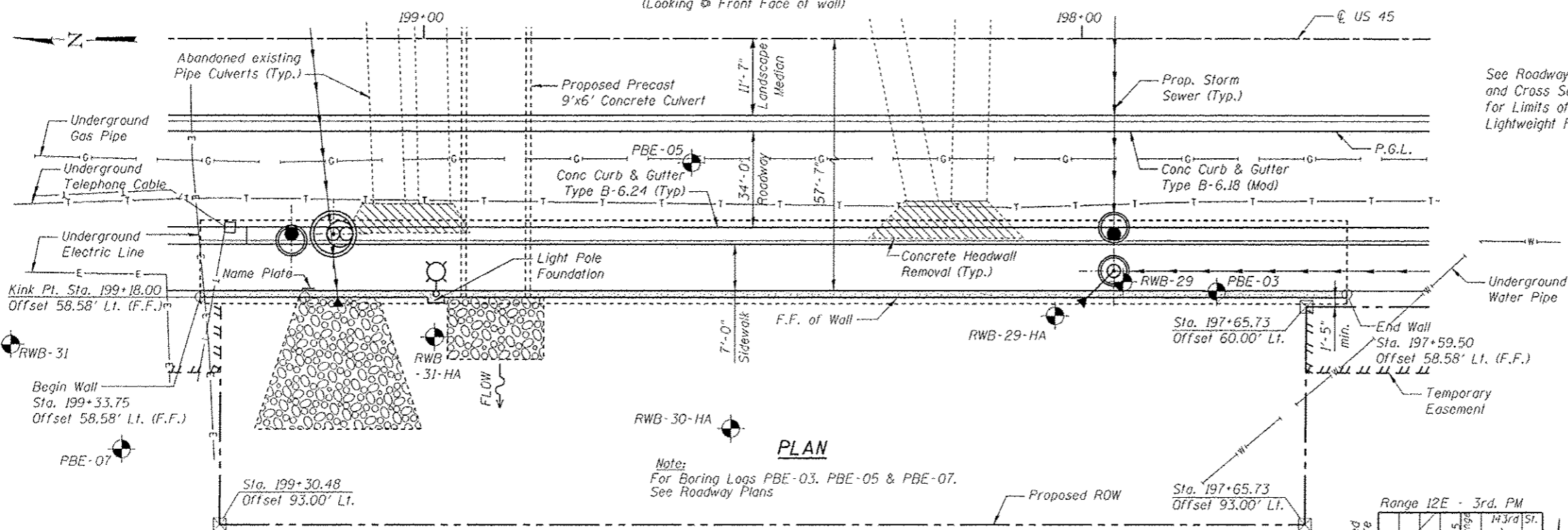


Benchmark: TBM "G" #569: Southeast bottom of light pole #93-15 +/- 300' north of 153rd st. on the west side of LaGrange rd. El 699.946

Existing Structure: None.



ELEVATION
(Looking @ Front Face of wall)



PLAN

DESIGN SPECIFICATIONS

2002 AASHTO Standard Specifications for Highway Bridges, 17th Edition

DESIGN STRESSES

Field Units
 $f'_c = 3,500$ psi
 $f_y = 60,000$ psi (Reinforcement)
 $f_y = 50,000$ psi (M270 Grade 50)

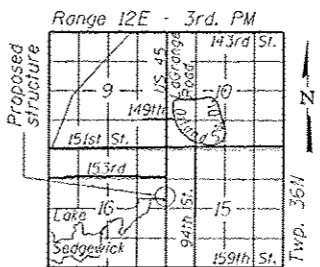
PROPOSED PROFILE GRADE
(FAP RTE. 330)

GENERAL NOTES

1. Reinforcement Bars Designated (E) shall be Epoxy Coated.
2. For Details of proposed 9'x6' Culvert, see Roadway Plans

STATION 198+46.63
 BUILT BY
 STATE OF ILLINOIS
 FAP RTE. 330 SEC. 103R-4
 LOADING HL-93
 STR. NO. 016-W001

NAME PLATE
See Std. 515001



LOCATION SKETCH

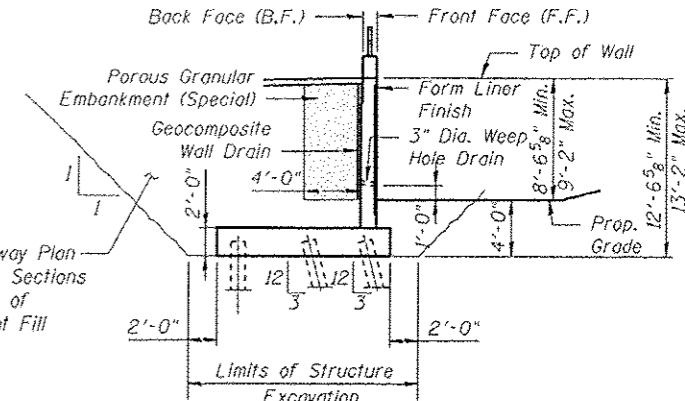
INDEX OF SHEETS

- Sheet No. Title
1. General Plan and Elevation
 2. Wall Reinforcement Details
 3. Wall Details
 4. Sections and Details
 5. Parapet Railing
 6. Metal Shell Pile Details
 7. Boring Logs 1 of 3
 8. Boring Logs 2 of 3
 9. Boring Logs 3 of 3

TOTAL BILL OF MATERIAL

ITEM	UNIT	TOTAL
Structure Excavation	Cu. Yd.	1,180
Concrete Structures	Cu. Yd.	250
Form Liner Textured Surface	Sq. Ft.	1,750
Protective Coat	Sq. Yd.	44.4
Reinforcement Bars, Epoxy Coated	Pound	35,290
Parapet Railing	Foot	167.0
Furnishing Metal Shell Piles	Foot	3,510
12" x 0.250"	Foot	3,510
Driving Piles	Foot	3,510
Test Pile Metal Shell	Each	1
Name Plates	Each	1
Geocomposite Wall Drain	Sq. Yd.	151
Porous Granular Embankment, Special	Cu. Yd.	202
Concrete Headwall Removal	Each	2

APPROVED
For Structural Adequacy Only
D. Carl Puyger, S.E.
 Engineer of Bridges & Structures



TYPICAL WALL SECTION
(Looking South)



Signed: *Olufemi A. Oladeinde*
 OLUFEMI A. OLADEINDE, P.E., S.E.
 LICENSE EXPIRES 11-30-2014
 Date: 03/21/13

GENERAL PLAN & ELEVATION
US 45 (LaGRANGE ROAD)
FAP RTE. 330 - SEC 103R-4
COOK COUNTY
STATION 199+33.75 TO 197+59.50
STRUCTURE NO. 016-W001



USER NAME	DESIGNED - LRT/AG	REVISIONS
DESIGNED	CHECKED - DAO	REVISIONS
CHECKED	DRAWN - TCS/AG	REVISIONS
DRAWN	CHECKED - LRT	REVISIONS
CHECKED		

STATE OF ILLINOIS
DEPARTMENT OF TRANSPORTATION

GENERAL PLAN AND ELEVATION

SHEET NO. 1 OF 9 SHEETS

F.A.P. RTE.	SECTION	COUNTY	TOTAL SHEETS	SHEET NO.
330	103R-4	COOK	877	519
CONTRACT NO. 60M61				

ILLINOIS FED. AID PROJECT