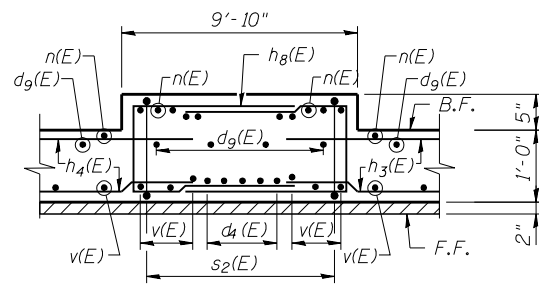
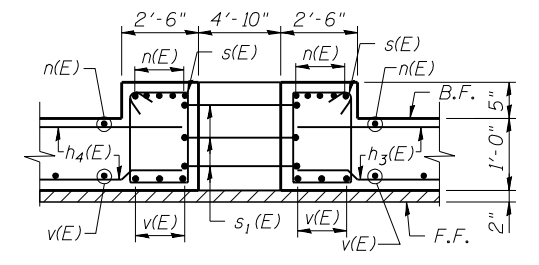


DETAIL 1 ELEVATION

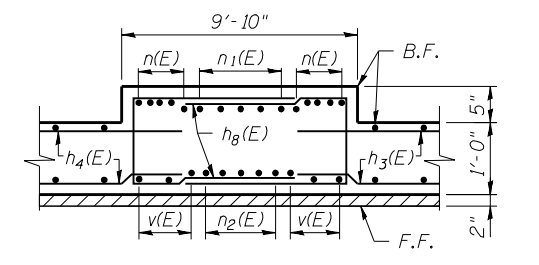
(Looking @ Front face of Wall)
 (See Sheet 4 for Section H)
 Cut $n_1(E)$ & $n_2(E)$ to fit around hole maintaining 2" min. clr.



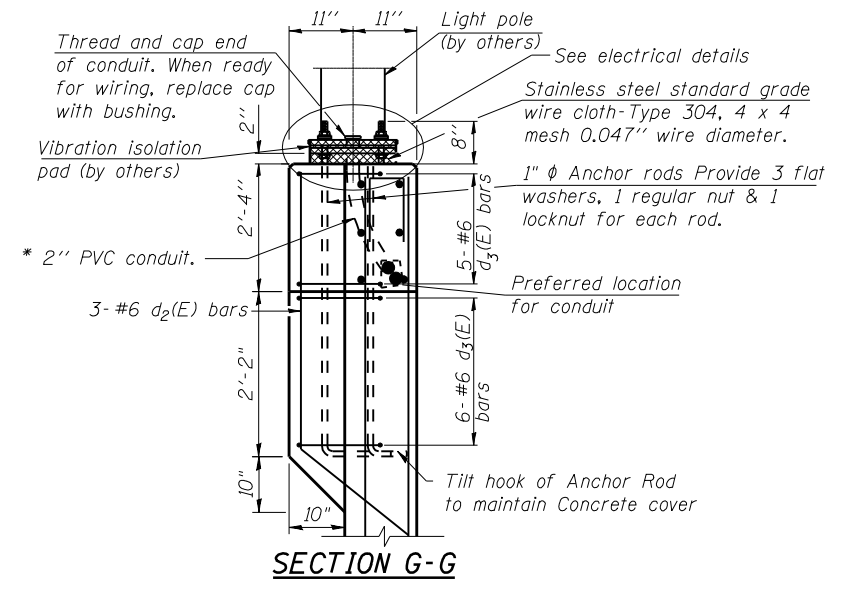
SECTION C-C



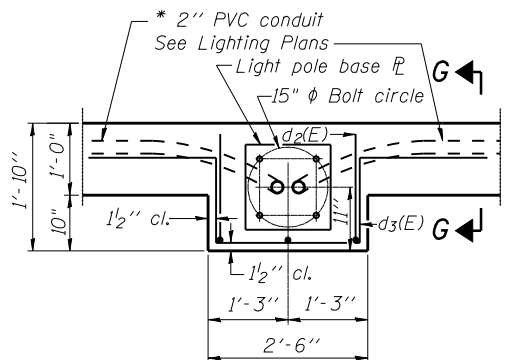
SECTION D-D



SECTION E-E

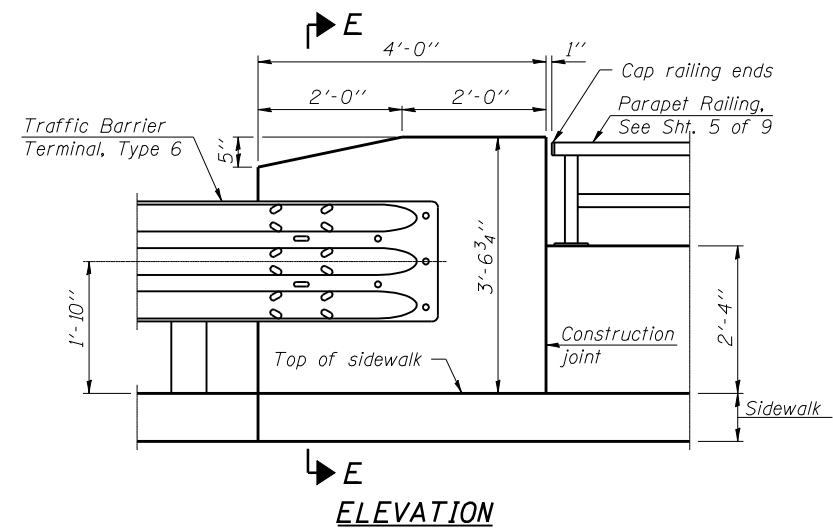


SECTION G-G

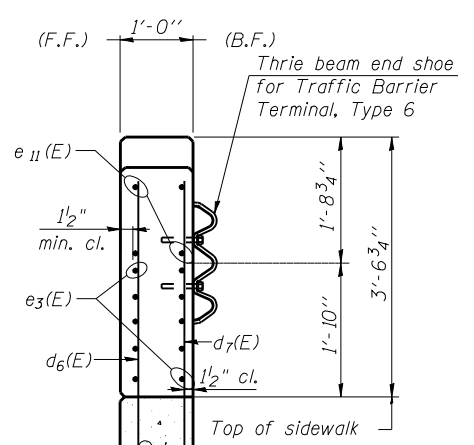


LIGHT POLE FOUNDATION PLAN

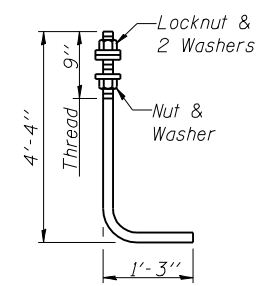
Notes:
 Cost of anchor rods is included with Concrete Structures.
 * Maintain 1/2" Clearance From Reinforcement



ELEVATION



SECTION E-E



ANCHOR ROD
 1" ϕ Diameter as specified for light poles.
 (ASTM F 1554 Grade 105)

Legend
 F.F. = Front Face
 B.F. = Back Face
 E.F. = Each Face

USER NAME =	DESIGNED - LRT/AG	REVISED -
PLOT SCALE =	CHECKED - OAO	REVISED -
PLOT DATE =	DRAWN - TCS/AG	REVISED -
	CHECKED - LRT	REVISED -

F.A.P. RTE.	SECTION	COUNTY	TOTAL SHEETS	SHEET NO.
330	103R-4	COOK	877	521
CONTRACT NO. 60M61				
ILLINOIS FED. AID PROJECT				