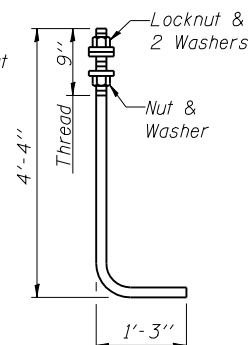
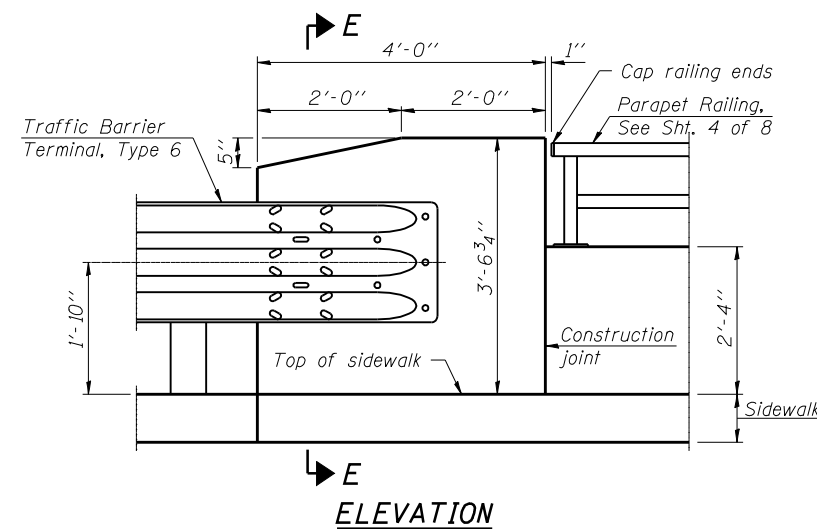


**SECTION D-D**

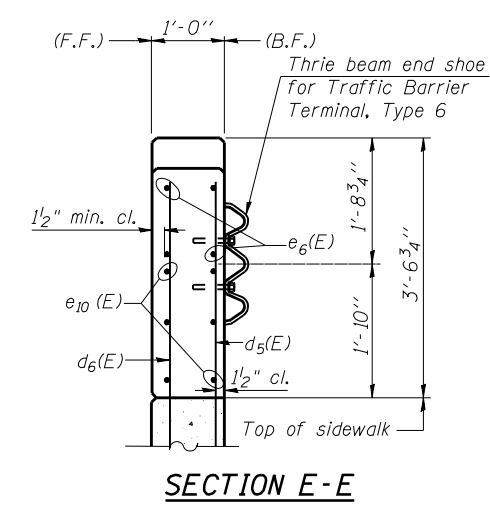


**ANCHOR ROD**

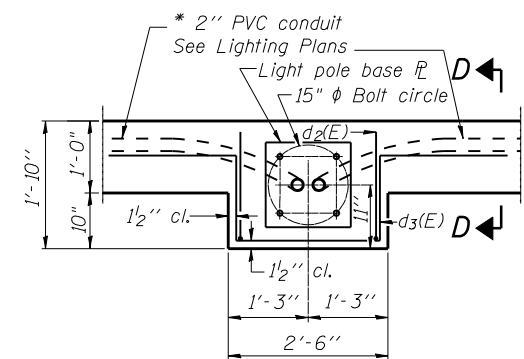
1"  $\phi$  Diameter as specified for light poles. (ASTM F 1554 Grade 105)



**ELEVATION**



**SECTION E-E**



**LIGHT POLE FOUNDATION PLAN**

Note: Cost of anchor rods is included with Concrete Structures.

\* Maintain 1/2" Clearance From Reinforcement

USER NAME =	DESIGNED - LRT/AG	REVISED -
	CHECKED - OAO	REVISED -
PLOT SCALE =	DRAWN - TCS/AG	REVISED -
PLOT DATE =	CHECKED - LRT	REVISED -

F.A.P. RTE.	SECTION	COUNTY	TOTAL SHEETS	SHEET NO.
330	103R-4	COOK	877	530
CONTRACT NO. 60M61				
ILLINOIS FED. AID PROJECT				