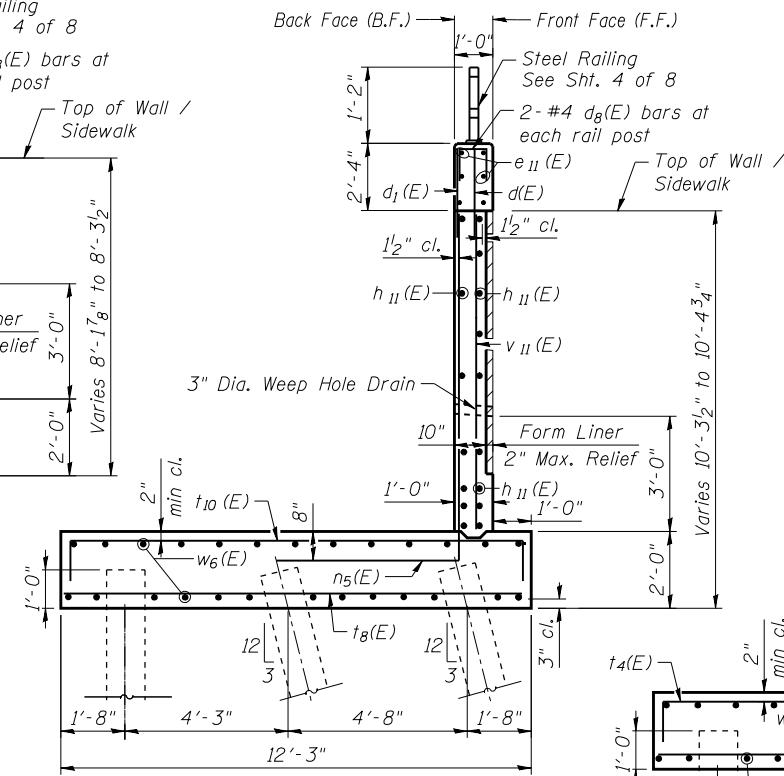
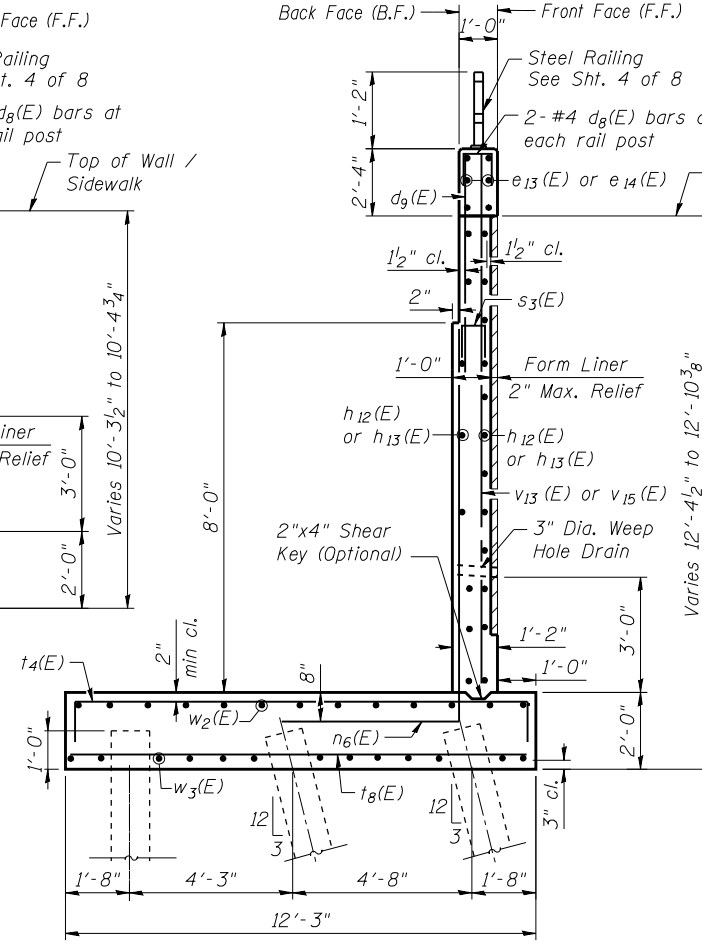


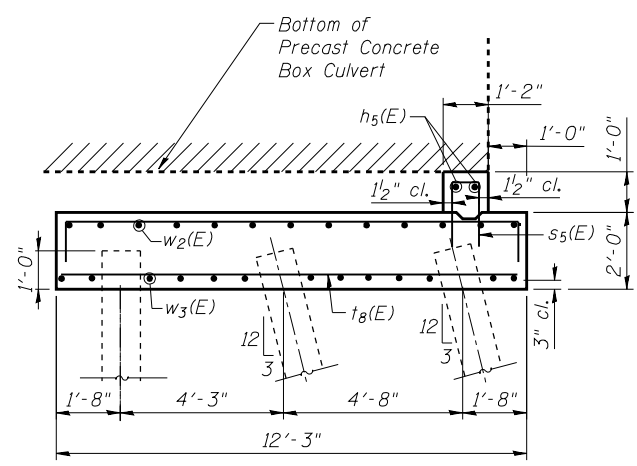
SECTION A-A



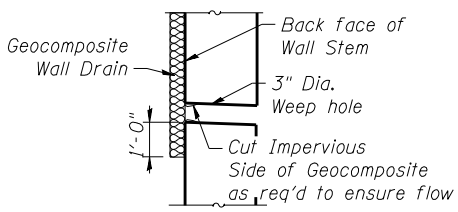
SECTION B-B



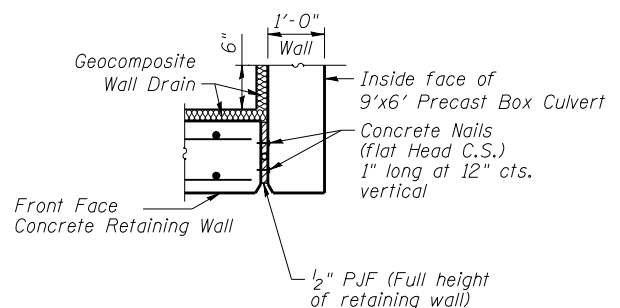
SECTION C-C



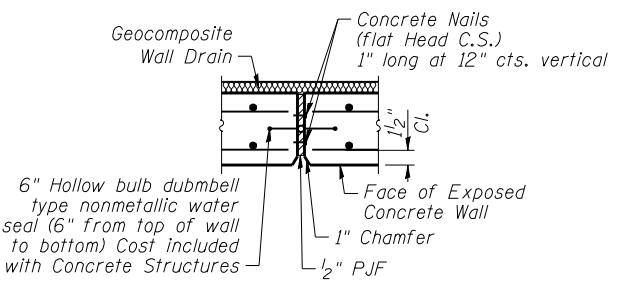
SECTION F-F



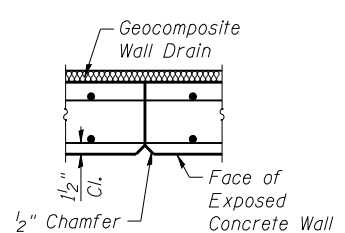
WEEP HOLE DRAIN DETAIL



EXPANSION JOINT AT RETAINING WALL & CULVERT



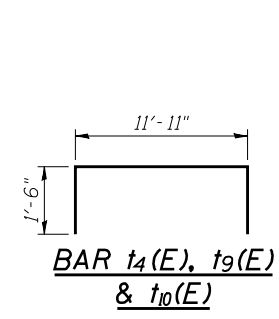
EXPANSION JOINT



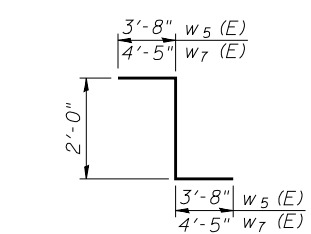
CONSTRUCTION JOINT

MINIMUM BAR LAPS

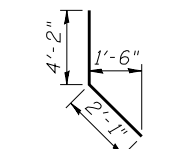
#4	2'-11"
#5	3'-8"
#6	4'-5"



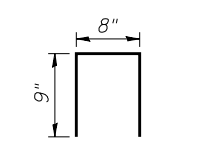
BAR t4(E), t9(E) & t10(E)



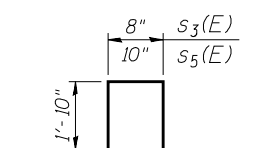
Bars w5(E) & w7(E)



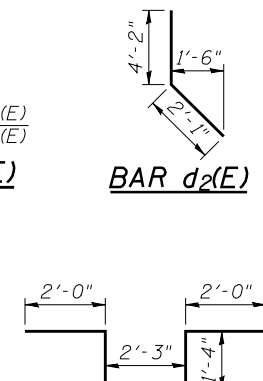
BAR d2(E)



BAR d8(E)



BARS s3(E) & s5(E)



BARS d3(E)

BILL OF MATERIAL

Bar	No.	Size	Length	Shape
d1(E)	190	#4	5'-3"	—
d1(E)	56	#6	6'-8"	—
d2(E)	3	#6	6'-3"	┌
d3(E)	11	#6	8'-11"	┌
d5(E)	6	#6	7'-11"	—
d6(E)	5	#4	6'-6"	—
d8(E)	44	#4	2'-2"	┌
d9(E)	180	#6	10'-0"	—
e6(E)	4	#4	3'-8"	—
e10(E)	10	#4	33'-8"	—
e11(E)	10	#4	27'-10"	—
e12(E)	20	#4	32'-2"	—
e13(E)	10	#4	29'-1"	—
e14(E)	10	#4	45'-1"	—
h5(E)	2	#5	10'-8"	—
h11(E)	14	#4	27'-10"	—
h12(E)	36	#4	32'-2"	—
h13(E)	18	#4	29'-1"	—
h14(E)	18	#4	45'-1"	—
h15(E)	11	#4	33'-7"	—
n4(E)	53	#6	8'-9"	┌
n5(E)	42	#7	11'-7"	┌
n6(E)	180	#8	12'-0"	┌
s3(E)	180	#6	4'-4"	┌
s5(E)	15	#6	4'-6"	┌
t4(E)	195	#7	14'-11"	┌
t5(E)	26	#5	2'-11"	—
t6(E)	26	#5	3'-4"	—
t7(E)	20	#5	9'-9"	—
t8(E)	263	#5	11'-11"	—
t9(E)	53	#5	14'-11"	┌
t10(E)	42	#6	14'-11"	┌
v10(E)	9	#4	6'-1"	—
v11(E)	8	#4	8'-3"	—
v13(E)	23	#4	10'-4"	—
v15(E)	13	#4	10'-9"	—
w2(E)	65	#6	32'-9"	—
w3(E)	52	#6	39'-10"	—
w4(E)	26	#5	30'-5"	—
w5(E)	26	#5	9'-4"	┌
w6(E)	26	#5	29'-8"	—
w7(E)	26	#6	10'-10"	┌
Structure Excavation	Cu. Yd.		973	
Concrete Structures	Cu. Yd.		281.0	
Reinforcement Bars, Epoxy Coated	Pound		36,840	
Furnishing Metal Shell Piles 12" x 0.250"	Foot		6,208	
Driving Piles	Foot		6,208	
Test Pile Metal Shells	Each		1	

BAR n4(E), n5(E) & n6(E)

Bar	A	B
n4(E)	6'-9"	2'-0"
n5(E)	8'-11"	2'-8"
n6(E)	8'-6"	3'-6"