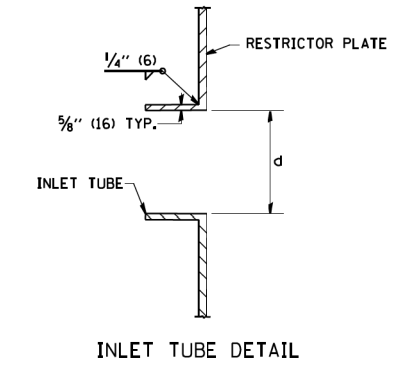
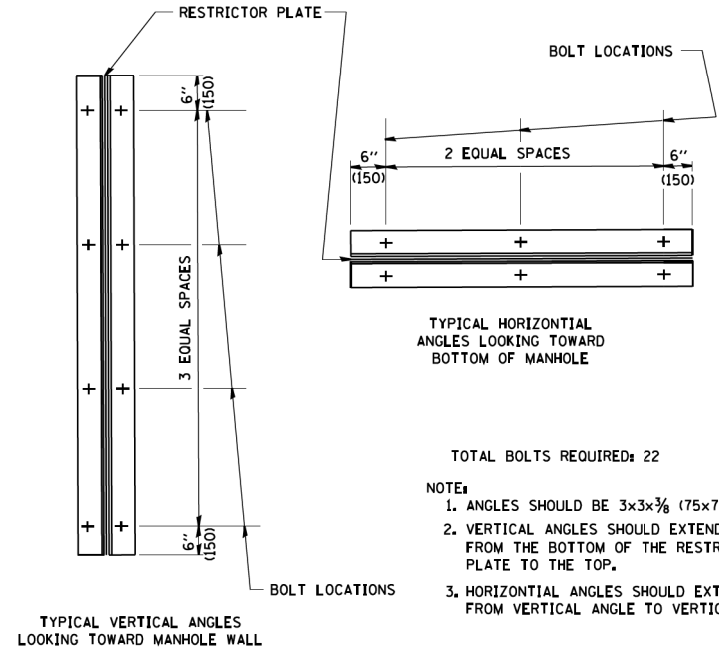


- NOTES:
1. ALL STEEL ANGLES AND PLATES TO BE GALVANIZED AFTER FABRICATION.
 2. ALL RESTRICTOR PLATES, ANGLES AND HARDWARE TO BE INCLUDED IN THE COST OF THE MANHOLE.
 3. BASIS OF PAYMENT: "MANHOLES, TYPE A, 6 FT. (1.8 m)-DIAMETER, TYPE 1 FRAME, CLOSED LID, RESTRICTOR PLATE" EACH



MANHOLE, TYPE A WITH 2 - TYPE 1 FRAMES, CLOSED LID, RESTRICTOR PLATE	MH DIA (FT)	RIM ELEVATION (FT)	ELEVATION OF TOP OF PLATE (FT)	RESTRICTOR INVERT (FT)	INSIDE RESTRICTOR DIAMETER (INCH)	RESTRICTOR TYPE
56E STA. 233+35.5 R	5	718.16	716.00	711.46	9.8	3
78E STA. 180+85.3 R	4	712.28	708.20	704.88	6.0	3



- TOTAL BOLTS REQUIRED: 22
- NOTE:
1. ANGLES SHOULD BE 3x3x3/8 (75x75x75)
 2. VERTICAL ANGLES SHOULD EXTEND FROM THE BOTTOM OF THE RESTRICTOR PLATE TO THE TOP.
 3. HORIZONTAL ANGLES SHOULD EXTEND FROM VERTICAL ANGLE TO VERTICAL ANGLE.

RESTRICTOR TYPE					
1	2	3	4	5	6
RE-ENFRANT TUBE	SHARP EDGED	SQUARE EDGED	RE-ENFRANT TUBE	SQUARE EDGED	ROUNDED
LENGTH: 1/2 TO 1 DIA.		STREAM CLEARS SIDES	LENGTH: 2-1/2 DIA.	LENGTH: 2-1/2 DIA.	
C=.52	C=.61	C=.61	C=.73	C=.82	C=.98

VALUES OF "C" FOR CIRCULAR AND SQUARE ORIFICES

STEEL ANGLE BOLTING DETAILS

ALL DIMENSIONS ARE IN INCHES (MILLIMETERS) UNLESS OTHERWISE SHOWN.