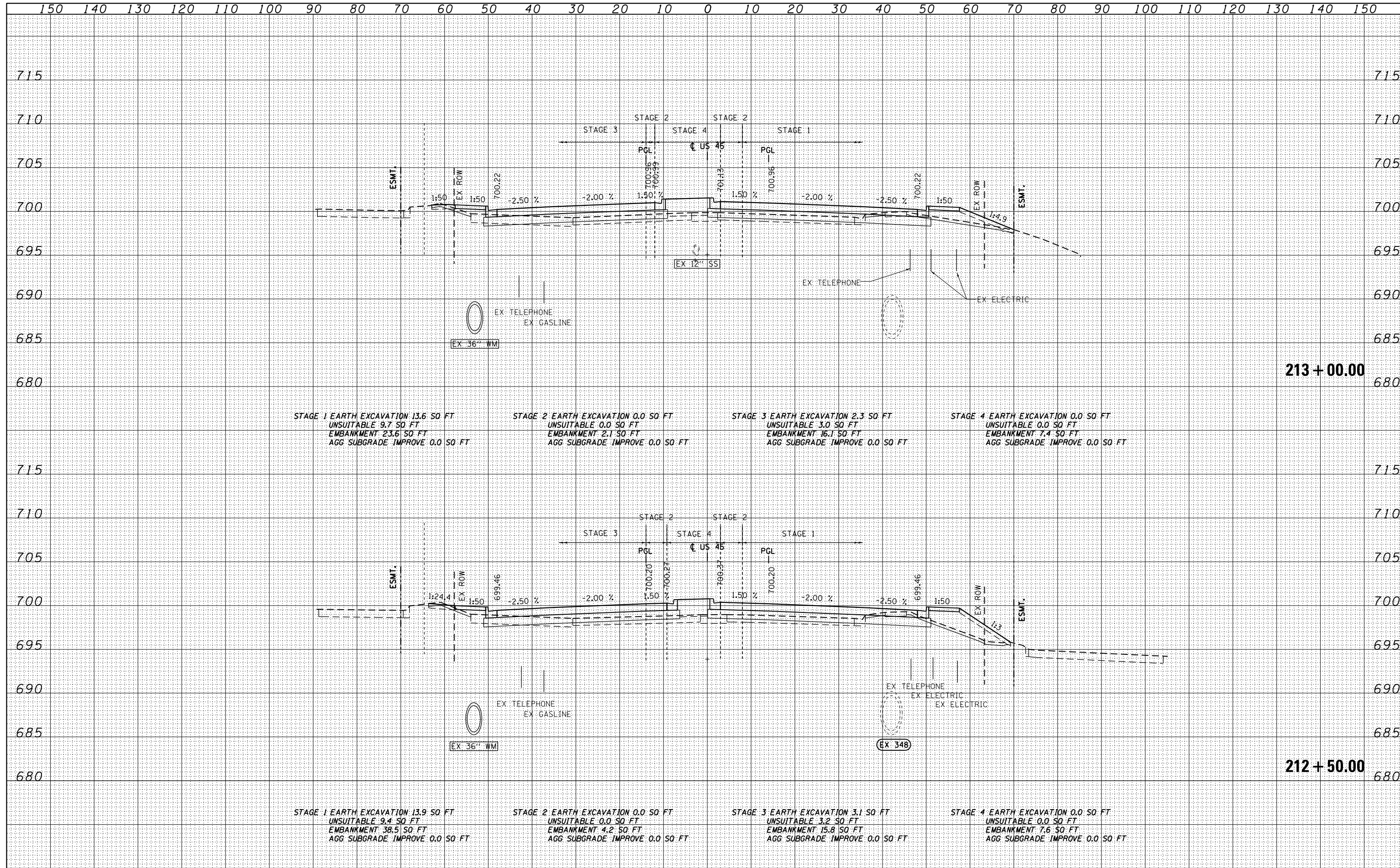


DATE	
BY	
SURVEYED	
PLOTTED	
TEMPLATE	
AREAS	
CHECKED	
FINISH	
NO.	

DATE	
BY	
SURVEYED	
PLOTTED	
TEMPLATE	
AREAS	
CHECKED	
FINISH	
NO.	

100 S. WACKER DR.  
 CHICAGO, IL 60606  
 TEL (312) 939-4000  
 FAX (312) 939-4198



FILE NAME =	USER NAME = Anthony.Plutz	DESIGNED - JCL	REVISED -	<b>STATE OF ILLINOIS</b> <b>DEPARTMENT OF TRANSPORTATION</b>	<b>US 54 CROSS SECTIONS</b> - SCALE: 1"=10'H; 1"=5'V SHEET NO. 41 OF 123 SHEETS STA. 212+50.00 TO STA. 213+00.00	F.A.P. RTE.	SECTION	COUNTY	TOTAL SHEETS	SHEET NO.
D160M61-SHT-XSSH01.dgn		DRAWN - JCL	REVISED -			330	103R-4	COOK	877	746
		PLOT SCALE = 20.0000" / in.	CHECKED - MJT			REVISED -	<b>XS-US45-41</b>		CONTRACT NO. 60M61	
		PLOT DATE = 3/13/2013	DATE - 03/13/2013			REVISED -	ILLINOIS FED. AID PROJECT			