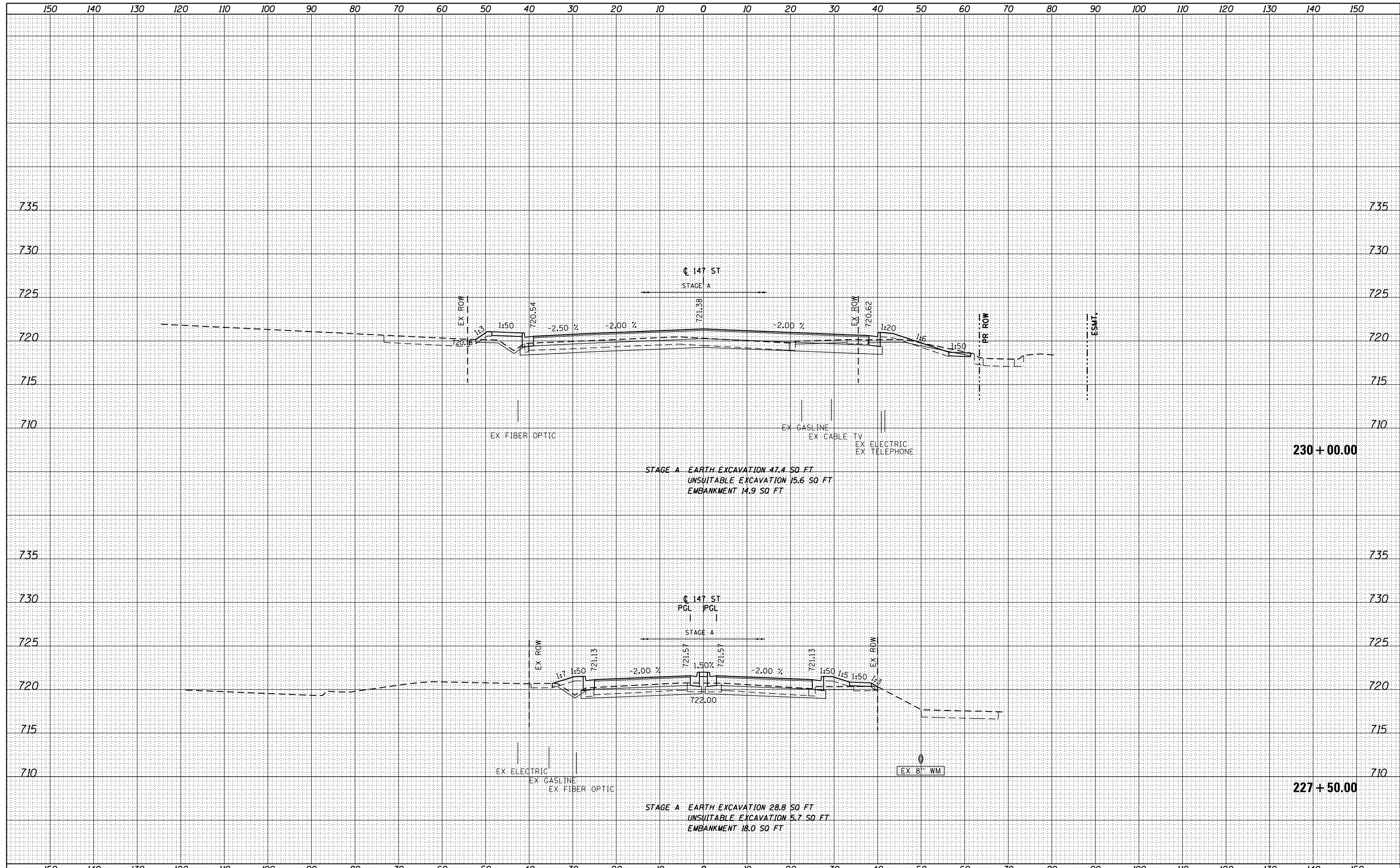


BY	DATE
FINISHED SURVEY	SURVEYED
NOTE BOOK	PLOTTED
NO.	TEMPLATE
	AREAS CHECKED

BY	DATE
ORIGINAL SURVEY	SURVEYED
NOTE BOOK	PLOTTED
NO.	TEMPLATE
	AREAS CHECKED

100 S. WACKER DR.
 CHICAGO, IL 60606
 TEL 312/939-4000
 FAX 312/939-4098



FILE NAME =	USER NAME = Anthony.Plutz	DESIGNED - JCL	REVISSED -	STATE OF ILLINOIS DEPARTMENT OF TRANSPORTATION	147th STREET CROSS SECTIONS			F.A.P. RTE.	SECTION	COUNTY	TOTAL SHEETS	SHEET NO.
D160M61-SHT-XSST05.dgn		DRAWN - JCL	REVISSED -		330	103R-4	COOK	877	862			
PLOT SCALE = 20.0000' / in.		CHECKED - MJT	REVISSED -		XS-147-05			CONTRACT NO. 60M61				
PLOT DATE = 3/13/2013		DATE - 03/13/2013	REVISSED -		SCALE: 1"=10'H, 1"=5'			SHEET NO. 5 OF 13 SHEETS STA. 227+50.00 TO STA. 230+00.00		ILLINOIS FED. AID PROJECT		