

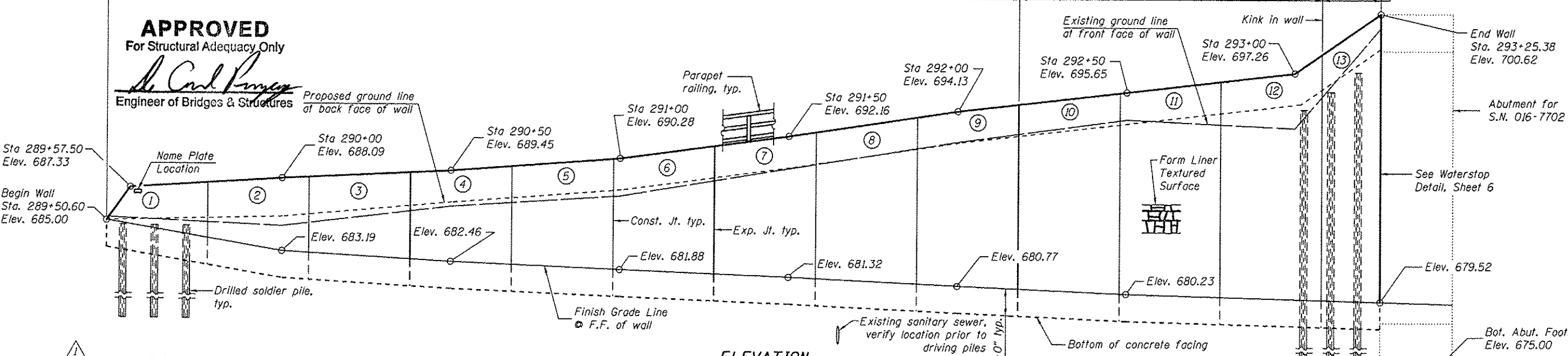
Bench Mark: Elev. 689.00 Top of brass survey monument located at the west edge of the LaGrange Road southbound pavement, 600 feet north of the SouthWest Highway bridge.

Existing Structure: None

377'-7 1/2"

Exp. Jt. Spa. 3 Spa. @ 90'-0" = 270'-0" 107'-7 1/2"  
 Const. Jt. Spa. 9 Spa. @ 30'-0" = 270'-0" 3 Spa. @ 30'-0" = 90'-0" 17'-7 1/2"

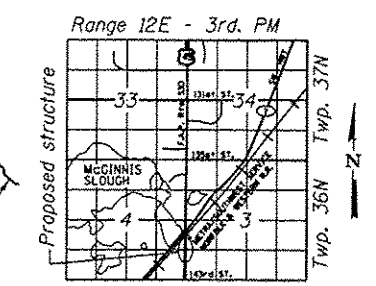
**APPROVED**  
 For Structural Adequacy Only  
*De Carl Pomyer*  
 Engineer of Bridges & Structures



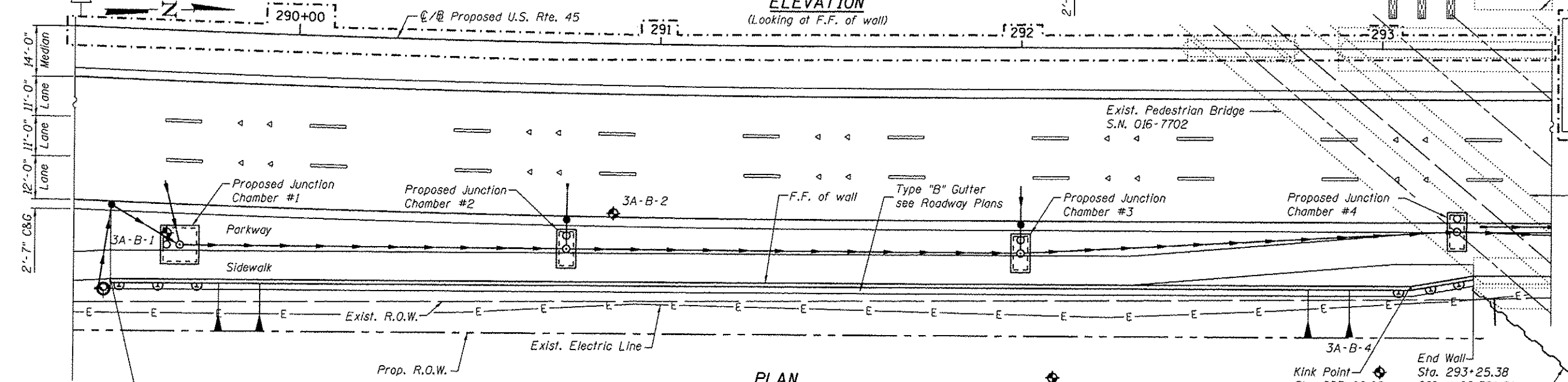
STATION 289+50.60 TO 293+25.38  
 BUILT BY  
 STATE OF ILLINOIS  
 F.A.P. RTE. 330 SEC. 103R-5  
 LOADING HS-20  
 STRUCTURE NO. 016-2002

**NAME PLATE**  
 See Std. 515001

Exist. Metra Bridge  
 S.N. 016-6201

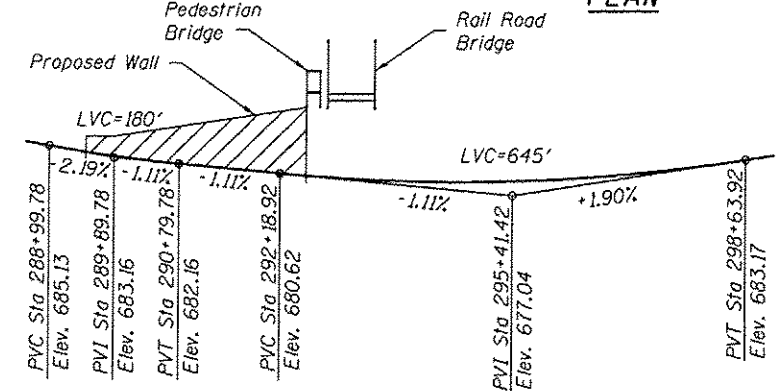


**LOCATION SKETCH**



**CURVE DATA**

Prop. Curve US45PCL-2  
 P.I. STA. = 290+43.86  
 $\Delta = 2^\circ 22' 27''$  (LT)  
 $D = 1^\circ 03' 15''$   
 $R = 5,435.00'$   
 $T = 112.62'$   
 $L = 225.21'$   
 $E = 1.17'$   
 $e = N.C.$   
 $T.R. = -$   
 S.E. RUN = -  
 P.C. STA = 289+31.24  
 P.T. STA = 291+56.45



**LEGEND**

- Exist. Sanitary Sewer
- Prop. Drainage Structure
- Prop. Storm Sewer
- Soil Boring
- F.F.=Front Face
- B.F.=Back Face
- E.F.=Each Face
- I.F.=Inside Face
- O.F.=Outside Face

Note:  
 Offsets are measured from the C/L of U.S. Rte. 45 to front face of wall



*Arsalan M. Khan*  
 ARSALAN M. KHAN, S.E.  
 LICENSE NO.: 081-006258  
 EXPIRES: NOVEMBER 30, 2014  
 DATE: 04-11-2013

**DESIGN SPECIFICATIONS**  
 2002 AASHTO Standard Specifications  
 for Highway Bridges

**DESIGN STRESSES**  
**FIELD UNITS**  
 $f'_c = 3,500$  psi  
 $f_y = 60,000$  psi (Reinforcement)  
 $f_y = 36,000$  psi (M270 Grade 36)

**GENERAL PLAN & ELEVATION**  
**U.S. ROUTE 45 - LAGRANGE ROAD**  
**F.A.P. RTE. 330 SEC. 103R-5**  
**COOK COUNTY**  
**STATION 289+50.60 TO 293+25.38**  
**STRUCTURE NO. 016-2002**

URS  
 100 S. Wacker Dr.  
 Chicago, IL 60606  
 TEL (312) 291-4000  
 FAX (312) 939-4199

FILE NAME = 0162002-60M62-001-CPE.dgn	USER NAME = arsalan.khan	DESIGNED - KJH	REVISED - 04/12/2013 P.M.H.
PLOT SCALE = 3/8" = 1' / 1/4"	PLOT DATE = 4/11/2013	CHECKED - PMH	REVISOR -
		DRAWN - RJ	REVISOR -
		CHECKED - MJL	REVISOR -

STATE OF ILLINOIS  
 DEPARTMENT OF TRANSPORTATION

SHEET NO. 1 OF 9 SHEETS

F.A.P. RTE. 330	SECTION 103R-5	COUNTY COOK	TOTAL SHEETS 778	SHEET NO. 394
CONTRACT NO. 60M62				
ILLINOIS FED. AID PROJECT				