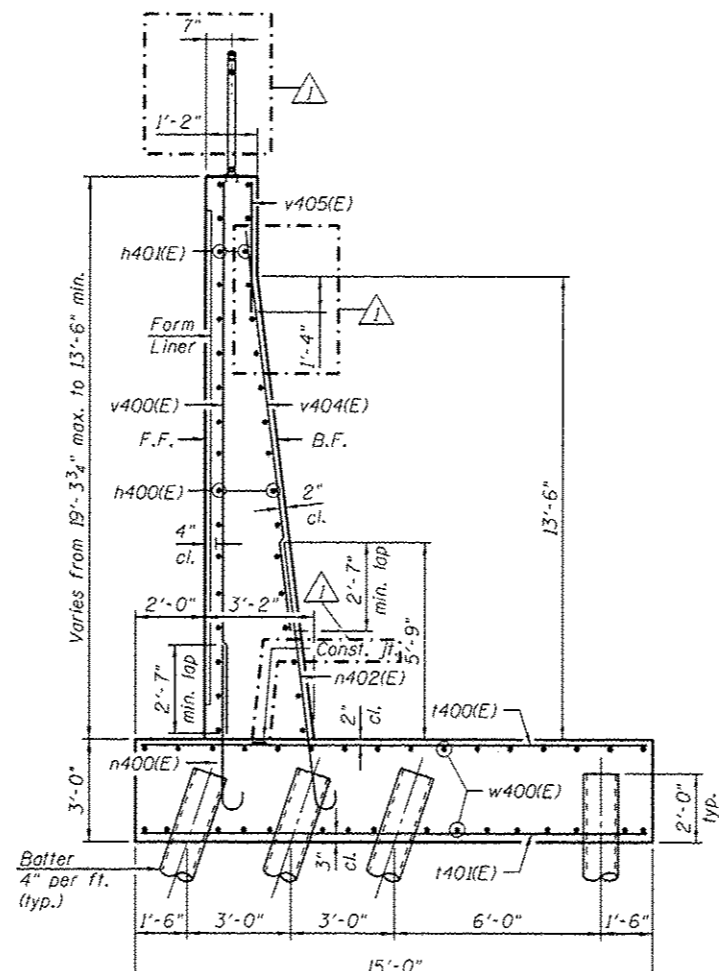
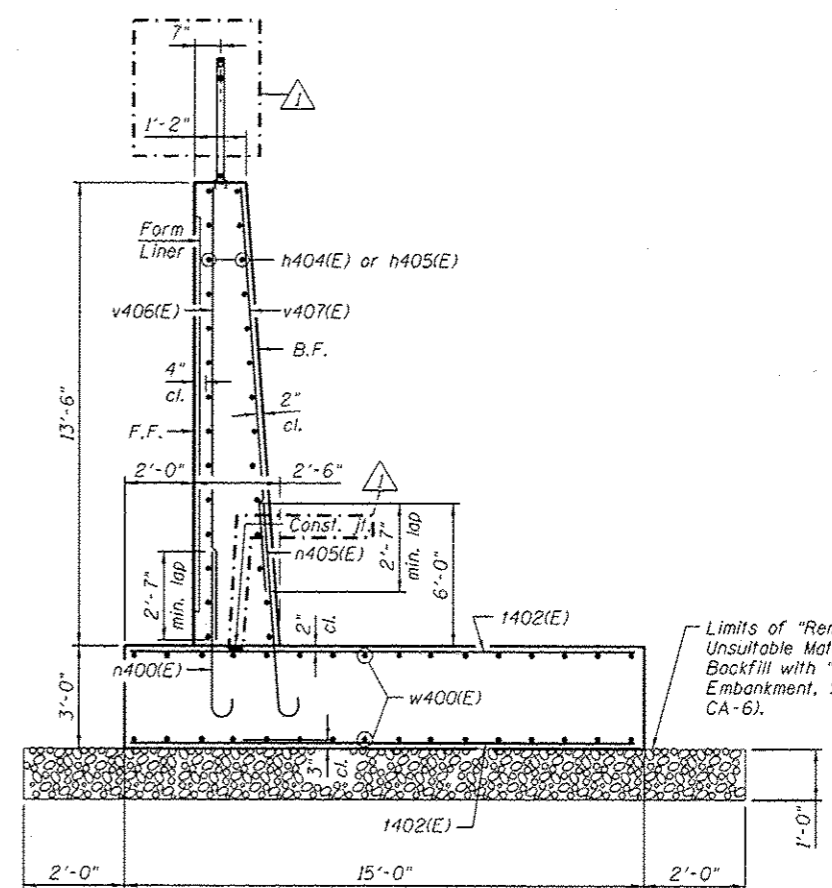


SECTION A-A
(Panel 1)



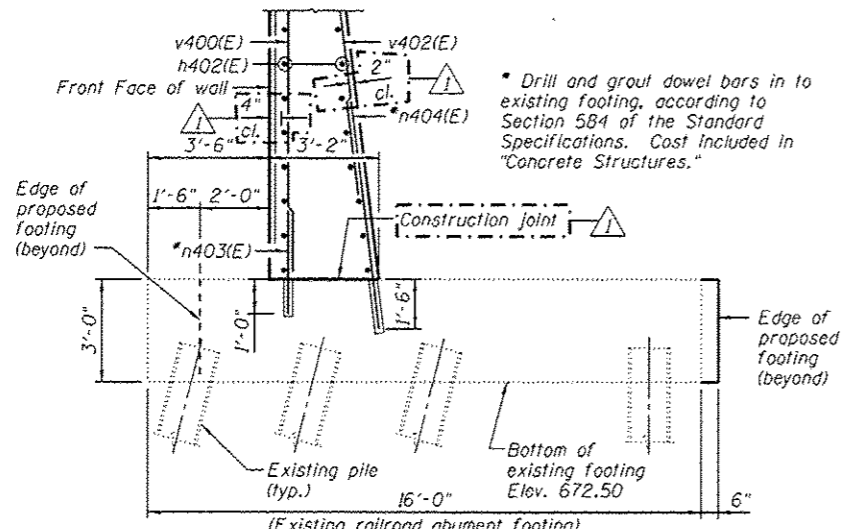
SECTION B-B
(Panel 2)



SECTION C-C
(Panels 3 and 4)

Maximum Applied Service Bearing Pressure = 0max = 3.20kst

Limits of "Removal and Disposal of Unsuitable Material for Structures." Backfill with "Granular Embankment, Special" (compacted CA-6).



SECTION D-D

* Drill and grout dowel bars in to existing footing, according to Section 584 of the Standard Specifications. Cost Included in "Concrete Structures."

URS
800 S. WACKER DR.
SUITE 500
CHICAGO, IL 60606
TEL (312) 939-0000
FAX (312) 939-4188

FILE NAME : 0162004-G0M62-00-det.dgn	USER NAME : aretan_khan	DESIGNED - MJL	REVISED - 04/12/2013 P.M.H.
		CHECKED - NPP	REVISED -
		DRAWN - AMV	REVISED -
		CHECKED - MJL	REVISED -

STATE OF ILLINOIS
DEPARTMENT OF TRANSPORTATION

SECTIONS AND DETAILS 1
STRUCTURE NO. 016-2004

SHEET NO. 4 OF 10 SHEETS

F.A.P. RTE.	SECTION	COUNTY	TOTAL SHEETS	SHEET NO.
330	103R-5	COOK	778	413
CONTRACT NO. 60M62				
ILLINOIS FED. AID PROJECT				