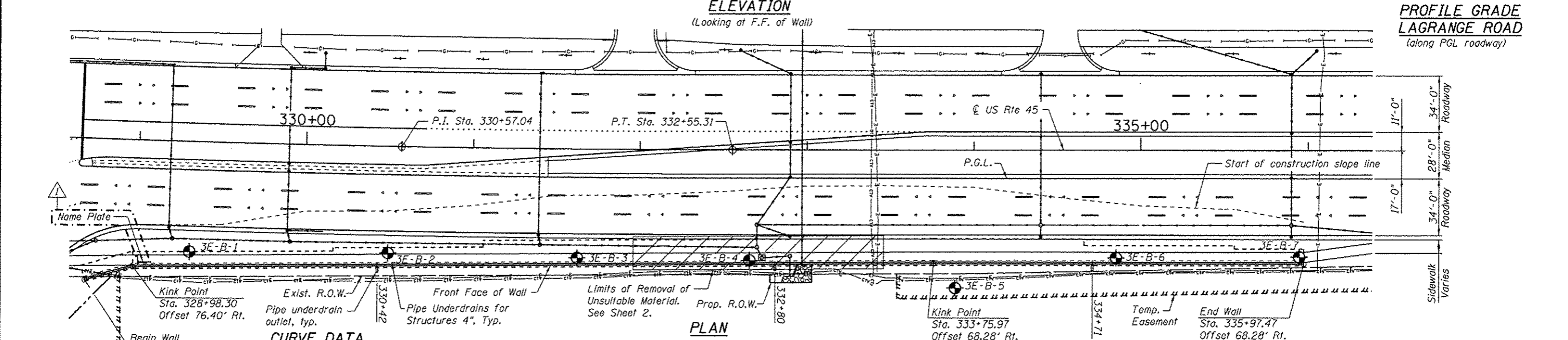
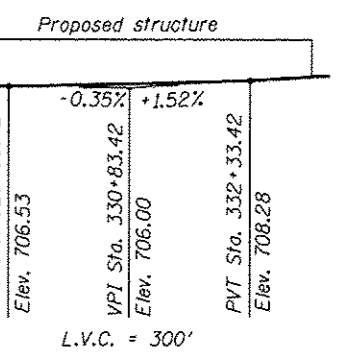
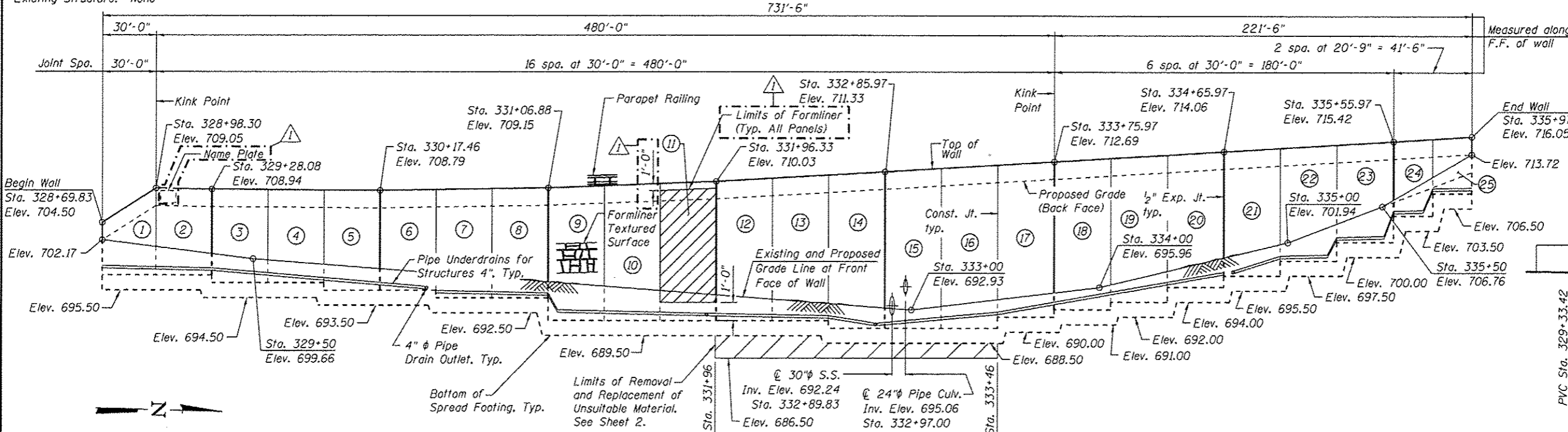
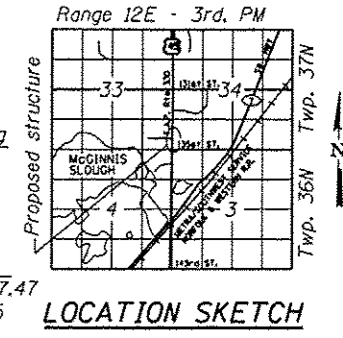


Bench Mark: Elev. 689.00 Top of brass survey monument located at the west edge of the LaGrange Road southbound pavement, 600 feet north of the SouthWest Highway bridge.

Existing Structure: None



CURVE DATA

(US45 PCL-3)
 PI Sta. = 330+57.04
 $\Delta = 1^\circ 59' 00''$ (LT)
 $D = 0^\circ 30' 00''$
 $R = 11,457.04'$
 $T = 198.32'$
 $L = 396.59'$
 $E = 1.72'$
 $e = N/A$
 $T.R. = N/A$
 $S.E. Run = N/A$
 $P.C. Sta. = 328+58.72$
 $P.T. Sta. = 332+55.31$



Arsalan Khan
 ARSALAN M. KHAN, S.E.
 LICENSE NO.: 081-006258
 EXPIRES: NOVEMBER 30, 2014
 DATE: 04-12-2013

DESIGN SPECIFICATIONS
 2012 AASHTO LRFD Bridge Design Specifications,
 6th Edition

DESIGN STRESSES
FIELD UNITS
 $f'c = 3,500$ psi
 $f_y = 60,000$ psi (Reinforcement)

LEGEND

- ① Panel No.
- Prop. Drainage Structure
- Prop. Storm Sewer
- Prop. Ditch Flow Line
- ⊙ Soil Boring
- F.F.=Front Face
- B.F.=Back Face
- E.F.=Each Face
- I.F.=Inside Face
- O.F.=Outside Face

GENERAL PLAN & ELEVATION
U.S. ROUTE 45 - LAGRANGE ROAD
F.A.P. RTE. 330 SEC. 103R-5
COOK COUNTY
STATION 328+69.83 TO 335+97.47
STRUCTURE NO. 016-2007

APPROVED
 For Structural Adequacy Only
Carl Kruger
 Engineer of Bridges & Structures

URS
 400 S. WACKER DR.
 SUITE 500
 CHICAGO, IL 60606
 TEL (312) 939-4000
 FAX (312) 939-4686

FILE NAME: 0162007-60M62-001-CPE.dgn	USER NAME: arsalan.khan	DESIGNED: PMH	REVISION: 04/12/2013 P.M.H.	STATE OF ILLINOIS DEPARTMENT OF TRANSPORTATION	F.A.P. RTE. 330	SECTION 103R-5	COUNTY COOK	TOTAL SHEETS 778	SHEET NO. 462
		CHECKED: MJL							
		DRAWN: PMH							
		CHECKED: MJL							
SHEET NO. 1 OF 12 SHEETS					CONTRACT NO. 60M62				