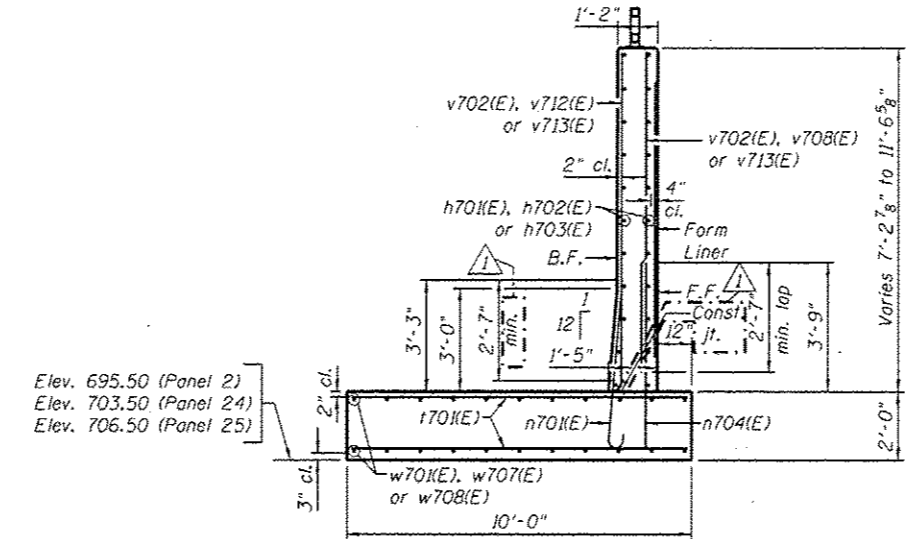
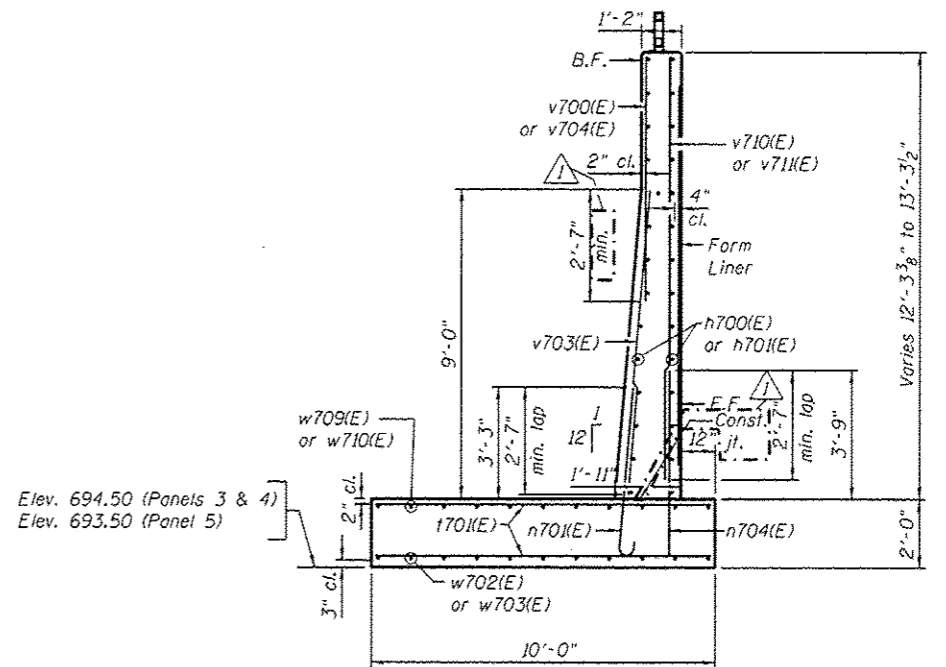


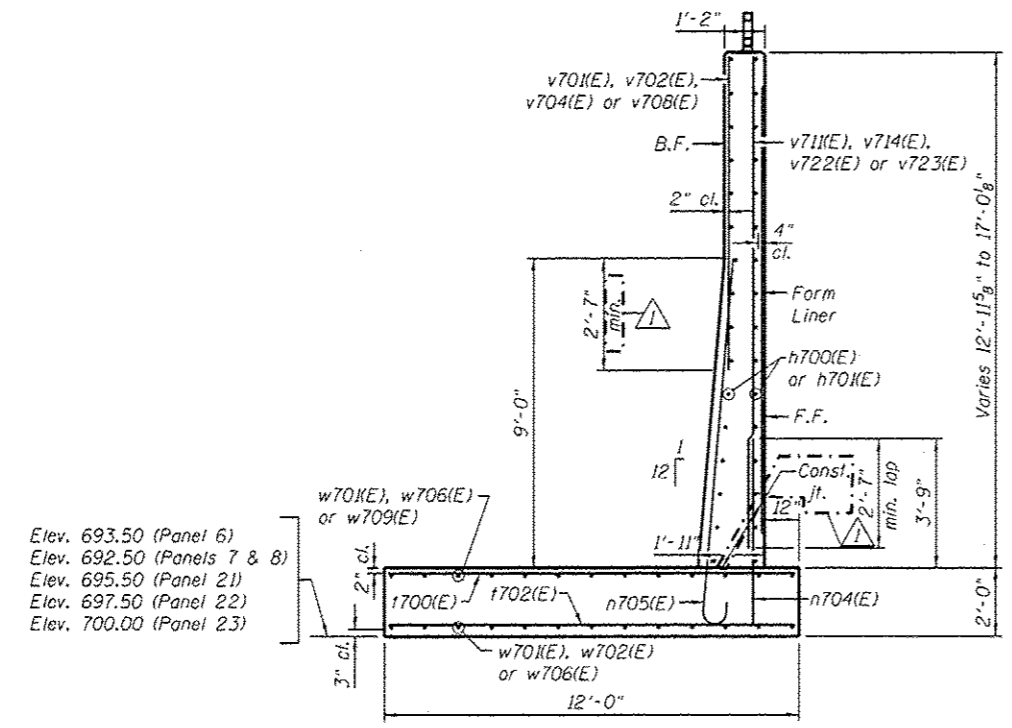
**SECTION A-A**  
**PANEL 1**  
Maximum Applied Service Bearing Pressure =  $Q_{max} = 2.23$  ksf



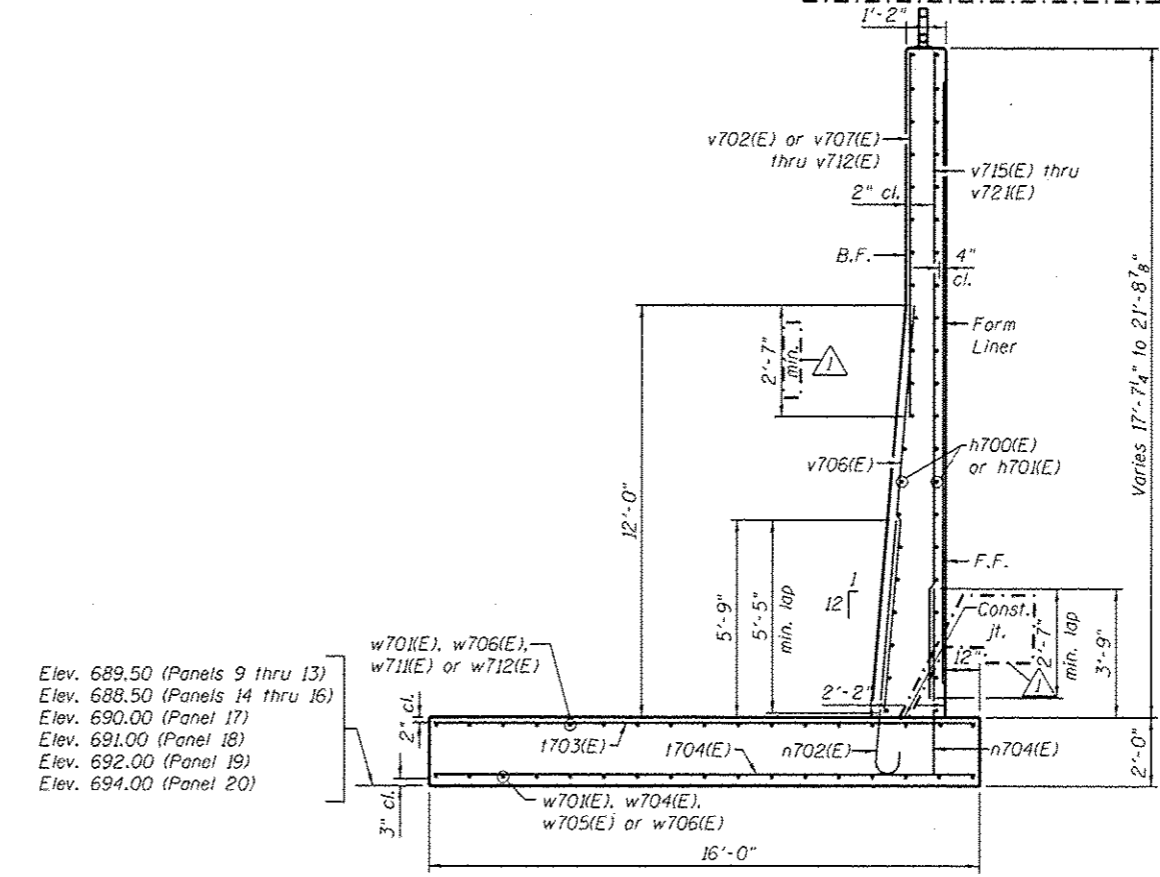
**SECTION B-B**  
**PANELS 2, 24 & 25**  
Maximum Applied Service Bearing Pressure =  $Q_{max} = 2.23$  ksf



**SECTION C-C**  
**PANELS 3 THRU 5**  
Maximum Applied Service Bearing Pressure =  $Q_{max} = 2.80$  ksf



**SECTION D-D**  
**PANELS 6 THRU 8 & 21 THRU 23**  
Maximum Applied Service Bearing Pressure =  $Q_{max} = 3.68$  ksf



**SECTION E-E**  
**PANELS 9 THRU 20**  
Maximum Applied Service Bearing Pressure =  $Q_{max} = 4.46$  ksf

**LEGEND**  
F.F. = Front Face of Wall  
B.F. = Back Face of Wall  
E.F. = Each Face of Wall

**NOTES**  
1. For Bar List see Sheet 8.

URS  
100 S. WACKER DR.  
SUITE 500  
CHICAGO, IL 60606  
TEL (312) 959-0000  
FAX (312) 959-4158

FILE NAME: 0162007-60M62-007-det.dgn	USER NAME: arsolan_khan	DESIGNED - PMH	REVISED - 04/12/2013 P.M.H.	<b>STATE OF ILLINOIS DEPARTMENT OF TRANSPORTATION</b>	<b>SECTIONS AND DETAILS STRUCTURE NO. 016-2007</b>	F.A.P. RTE.	SECTION	COUNTY	TOTAL SHEETS	SHEET NO.
PLOT SCALE: 1/2" = 1'-0"	DRAWN - PMH	REVISED -	330			103R-5	COOK	778	468	
PLOT DATE: 4/12/2013	CHECKED - MJL	REVISED -	CONTRACT NO. 60M62							
SHEET NO. 7 OF 12 SHEETS						ILLINOIS FED. AID PROJECT				