

STATE OF ILLINOIS  
DEPARTMENT OF TRANSPORTATION  
DIVISION OF HIGHWAYS

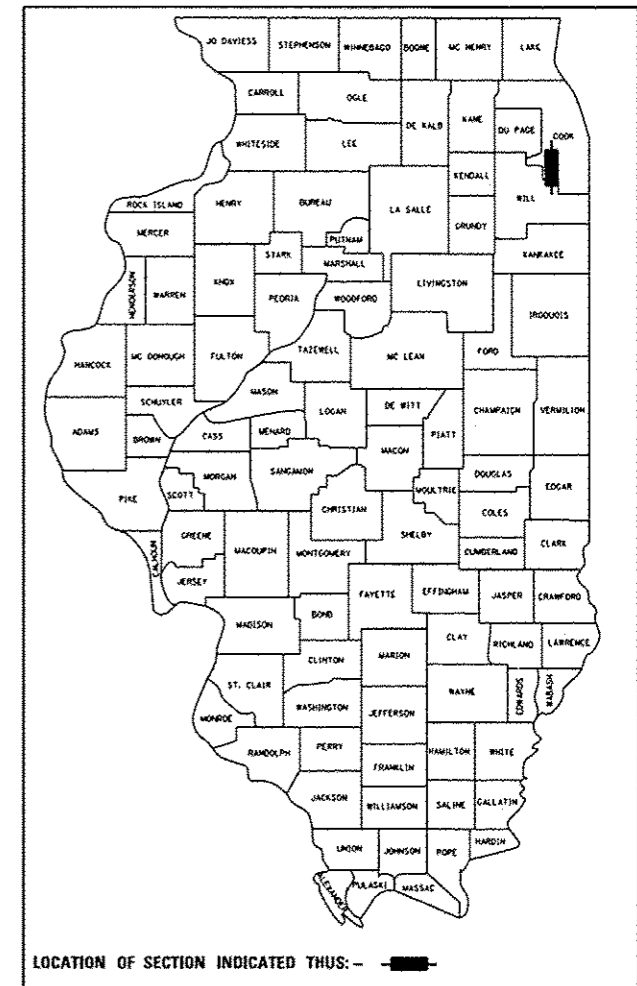
**PROPOSED  
HIGHWAY PLANS**

FAP ROUTE 330: US 45 (LAGRANGE ROAD)  
131ST STREET TO 143RD STREET  
SECTION: 103R-5  
PROJECT: NHPP-HPP-2081 (100)  
ADDITIONAL LANES  
COOK COUNTY  
C-91-146-11

F.A.P. RTE.	SECTION	COUNTY	TOTAL SHEETS	SHEET NO.
330	103R-5	COOK	778	1
		ILLINOIS	CONTRACT NO. 60M62	

\* 778 + 22 - 3 = 797

D-91-436-12  
D-91-569-08



FOR INDEX OF SHEETS, SEE SHEET NO. 3

PROJECT LOCATED IN VILLAGES OF  
ORLAND PARK, PALOS PARK

**STATION EQUATIONS:**

STA 327+93.61 @ US 45 (LAGRANGE ROAD) =  
STA 650+00.00 @ 135TH STREET

STA 354+47.26 @ US 45 (LAGRANGE ROAD) =  
STA 18+46.60 @ 131ST STREET

STA 367+37.93 @ US 45 (LAGRANGE ROAD) =  
STA 29+07.13 @ CREEK RD

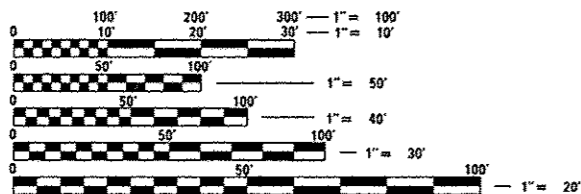
**DESIGN DESIGNATION:**

US 45 (LAGRANGE ROAD): 2550 (20) OTHER PRINCIPAL ARTERIAL AND STRATEGIC  
REGIONAL ARTERIAL (SRA) - CLASS II TRUCK ROUTE 11.85 (JPCP-20)

131ST STREET: 620 (20) MINOR ARTERIAL 8.68 (FD-20)  
135TH STREET: 450 (20) MINOR ARTERIAL 8.68 (FD-20)  
CREEK ROAD: 2200 (12) LOCAL (RESIDENTIAL) 8.68 (FD-20)

**DESIGN TRAFFIC DATA:**

US 45 (LAGRANGE ROAD) = 45 MPH  
ADT = 47,000 (2000, 143RD ST TO 135TH ST)  
ADT = 52,000 (2000, 135TH ST TO 131ST ST)  
ADT = 52,000 (2030, 143RD ST TO 135TH ST)  
ADT = 57,000 (2030, 135TH ST TO 131ST ST)  
131ST STREET = 45 MPH  
MHV = 3,893 (2000)  
135TH STREET = 45 MPH  
MHV = 3,695 (2000)  
CREEK RD = 35 MPH

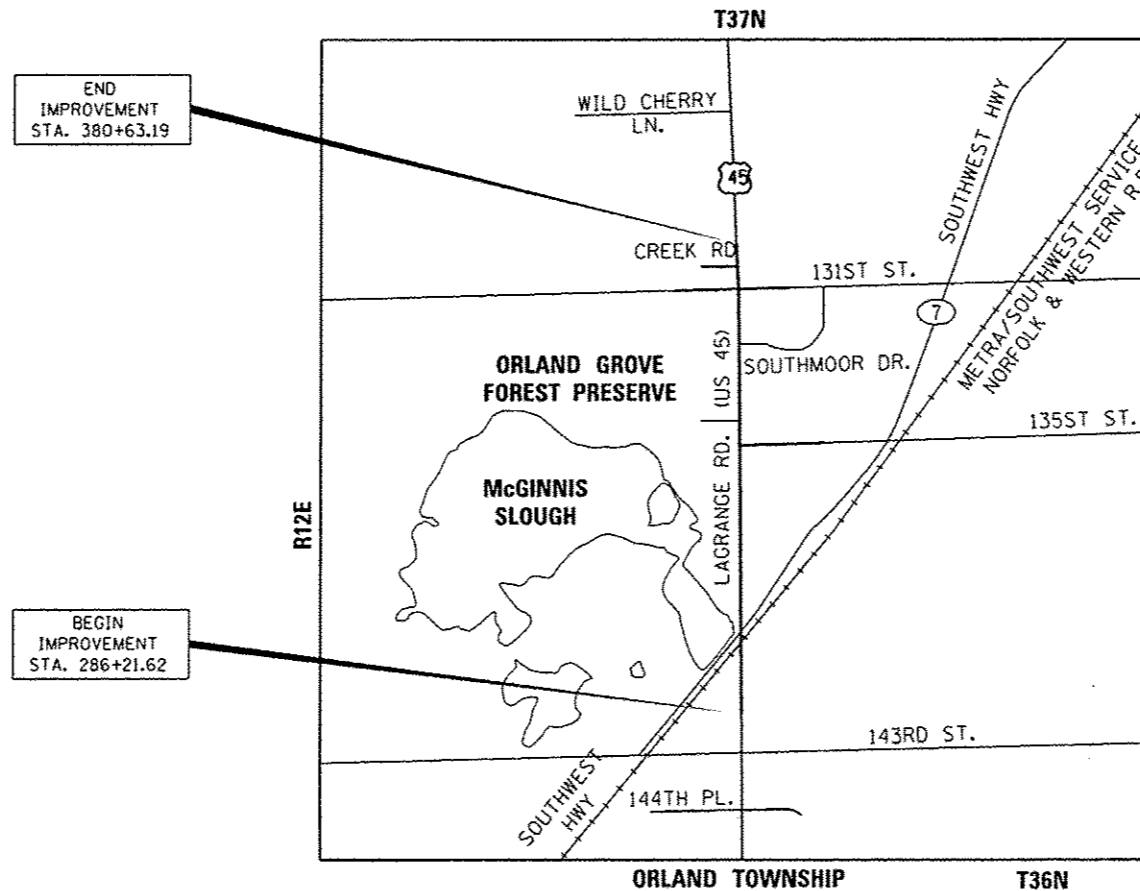


FULL SIZE PLANS HAVE BEEN PREPARED USING STANDARD  
ENGINEERING SCALES. REDUCED SIZED PLANS WILL NOT  
CONFORM TO STANDARD SCALES. IN MAKING MEASUREMENTS  
ON REDUCED PLANS, THE ABOVE SCALES MAY BE USED.

J.U.L.I.E.  
JOINT UTILITY LOCATION INFORMATION FOR EXCAVATION  
1-800-892-0123  
OR 811

PROJECT MANAGER: RAJENDRA SHAH, P.E.  
(847) 705-4555

CONTRACT NO. 60M62



END  
IMPROVEMENT  
STA. 380+63.19

BEGIN  
IMPROVEMENT  
STA. 286+21.62



T37N  
T36N



2/1/13

DAVID D. LANDEWEER, P.E.  
LICENSE NO.: 062-042363  
EXPIRES: NOVEMBER 30, 2013

SEE SHEET 2 FOR APPLICABLE  
DESIGN SECTION SIGNATURES

STATE OF ILLINOIS  
DEPARTMENT OF TRANSPORTATION  
DIVISION OF HIGHWAYS

SUBMITTED February 1, 2013  
John Fortmeyer, P.E.  
DEPUTY DIRECTOR OF HIGHWAYS, REGION ENGINEER

March 22, 2013  
John D. Baranzolle, P.E.  
acting ENGINEER OF DESIGN AND ENVIRONMENT

March 22, 2013  
Omer Osman, P.E.  
DIRECTOR OF HIGHWAYS, CHIEF ENGINEER

PRINTED BY THE AUTHORITY  
OF THE STATE OF ILLINOIS

PLANS PREPARED BY:  
**URS** 100 S. WACKER DR., SUITE 500 TEL (312)-939-1000  
CHICAGO IL, 60606 FAX (312)-939-4198

GROSS LENGTH = 9,441.57 FT. = 1.788 MILE  
NET LENGTH = 9,441.57 FT. = 1.788 MILE

RD 3-19-2013