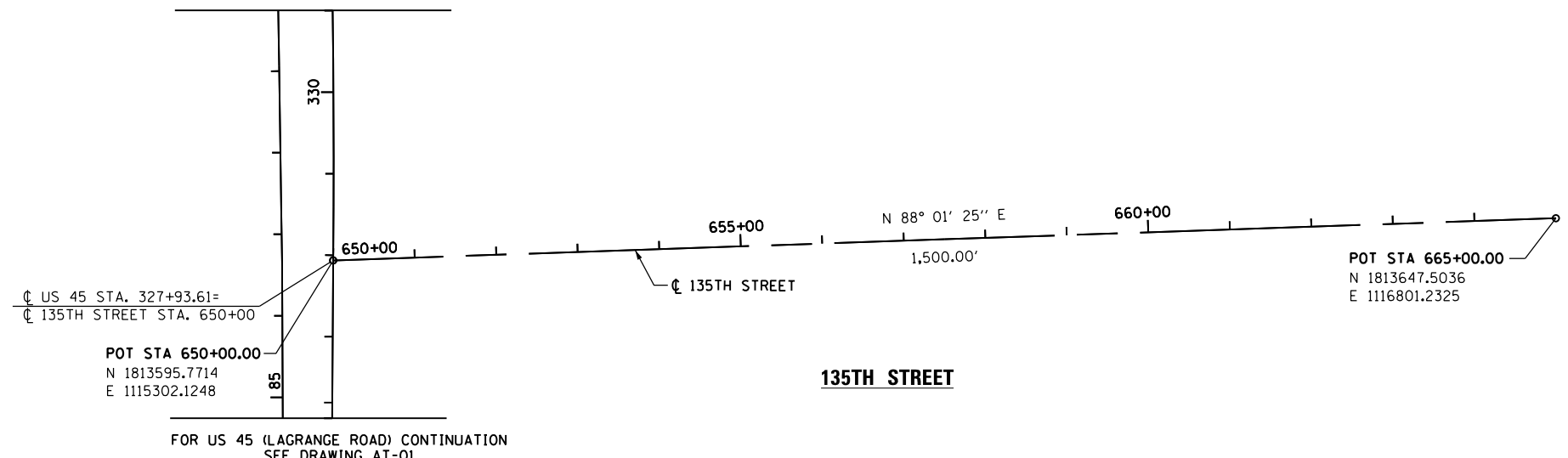
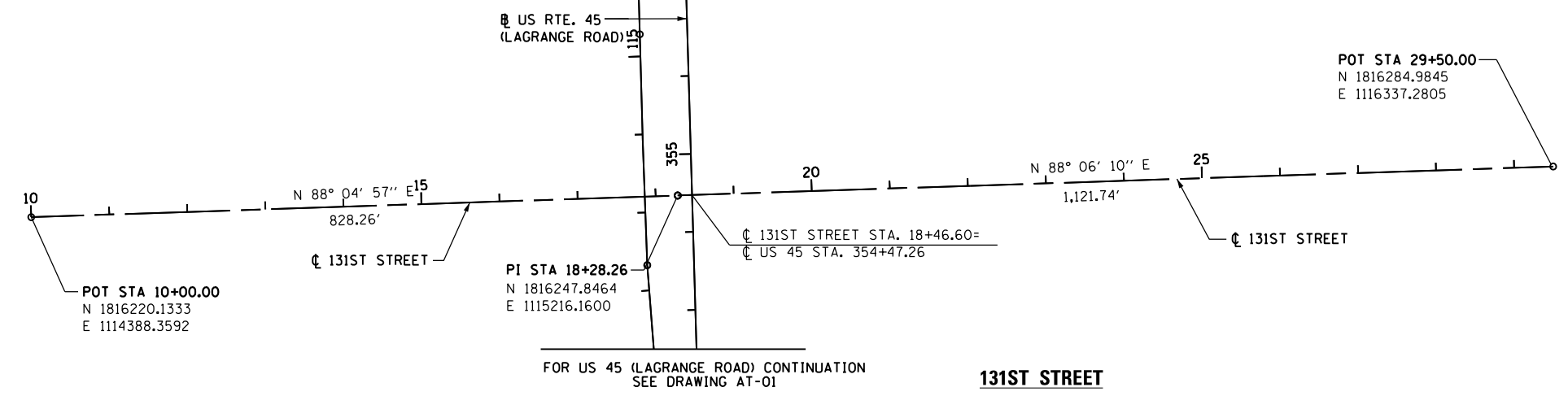


FOR US 45 (LAGRANGE ROAD) CONTINUATION  
SEE DRAWING AT-01



FOR US 45 (LAGRANGE ROAD) CONTINUATION  
SEE DRAWING AT-01

FOR US 45 (LAGRANGE ROAD) CONTINUATION  
SEE DRAWING AT-01



FOR US 45 (LAGRANGE ROAD) CONTINUATION  
SEE DRAWING AT-01

100 S. WACKER DR.  
 SUITE 600  
 CHICAGO, IL 60606  
 TEL (312) 939-1000  
 FAX (312) 939-4998  
**URS**

FILE NAME = D160M62-SHT-AT02.dgn	USER NAME = Anthony.Plutz	DESIGNED - BA	REVISED -
		DRAWN - BA	REVISED -
		CHECKED -	REVISED -
		DATE - 03/13/13	REVISED -

**STATE OF ILLINOIS**  
**DEPARTMENT OF TRANSPORTATION**

<b>ALIGNMENT, TIES AND BENCHMARKS</b>			
SCALE: 1"=100'	SHEET 2 OF 5 SHEETS	STA.	TO STA.

F.A.P. RTE.	SECTION	COUNTY	TOTAL SHEETS	SHEET NO.
330	103R-5	COOK	778	44
<b>AT-02</b>			<b>CONTRACT NO. 60M62</b>	
ILLINOIS FED. AID PROJECT				