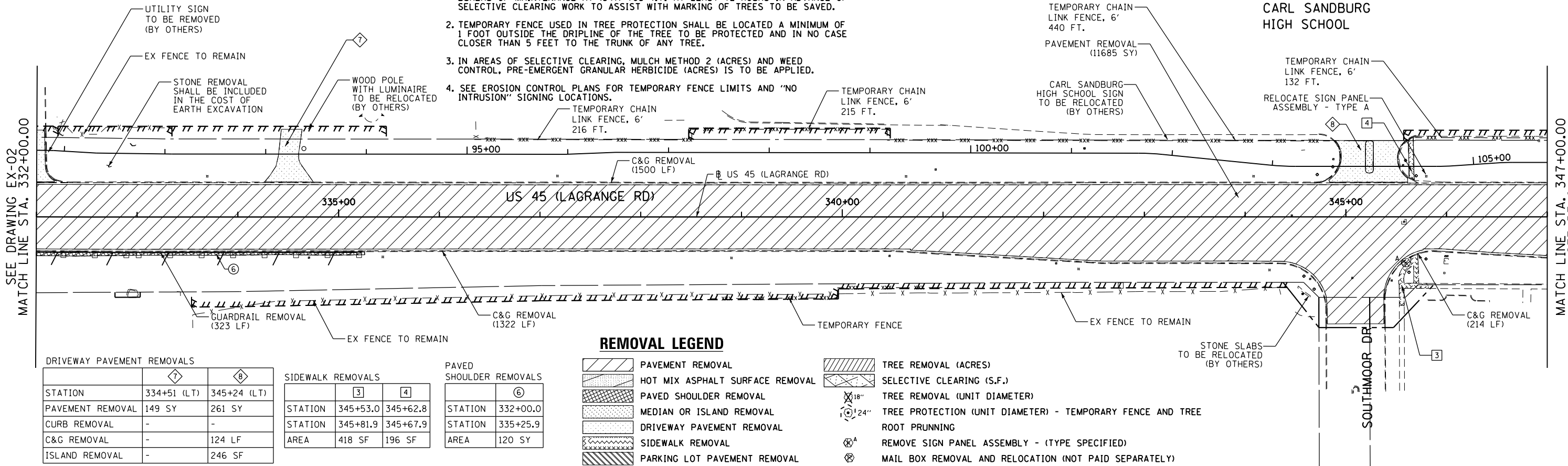


NOTES:

1. THE CONTRACTOR SHALL CONTACT THE ROADSIDE DEVELOPMENT UNIT IN THE BUREAU OF MAINTENANCE AT (847) 705-4171 AT LEAST 72 HOURS IN ADVANCE OF SELECTIVE CLEARING WORK TO ASSIST WITH MARKING OF TREES TO BE REMOVED.
2. TEMPORARY FENCE USED IN TREE PROTECTION SHALL BE LOCATED A MINIMUM OF 1 FOOT OUTSIDE THE DRIPLINE OF THE TREE TO BE PROTECTED AND IN NO CASE CLOSER THAN 5 FEET TO THE TRUNK OF ANY TREE.
3. IN AREAS OF SELECTIVE CLEARING, MULCH METHOD 2 (ACRES) AND WEED CONTROL, PRE-EMERGENT GRANULAR HERBICIDE (ACRES) IS TO BE APPLIED.
4. SEE EROSION CONTROL PLANS FOR TEMPORARY FENCE LIMITS AND "NO INTRUSION" SIGNING LOCATIONS.



DRIVEWAY PAVEMENT REMOVALS

STATION	7	8
PAVEMENT REMOVAL	149 SY	261 SY
CURB REMOVAL	-	-
C&G REMOVAL	-	124 LF
ISLAND REMOVAL	-	246 SF

SIDWALK REMOVALS

STATION	3	4
PAVEMENT REMOVAL	149 SY	261 SY
CURB REMOVAL	-	-
C&G REMOVAL	-	124 LF
ISLAND REMOVAL	-	246 SF

PAVED SHOULDER REMOVALS

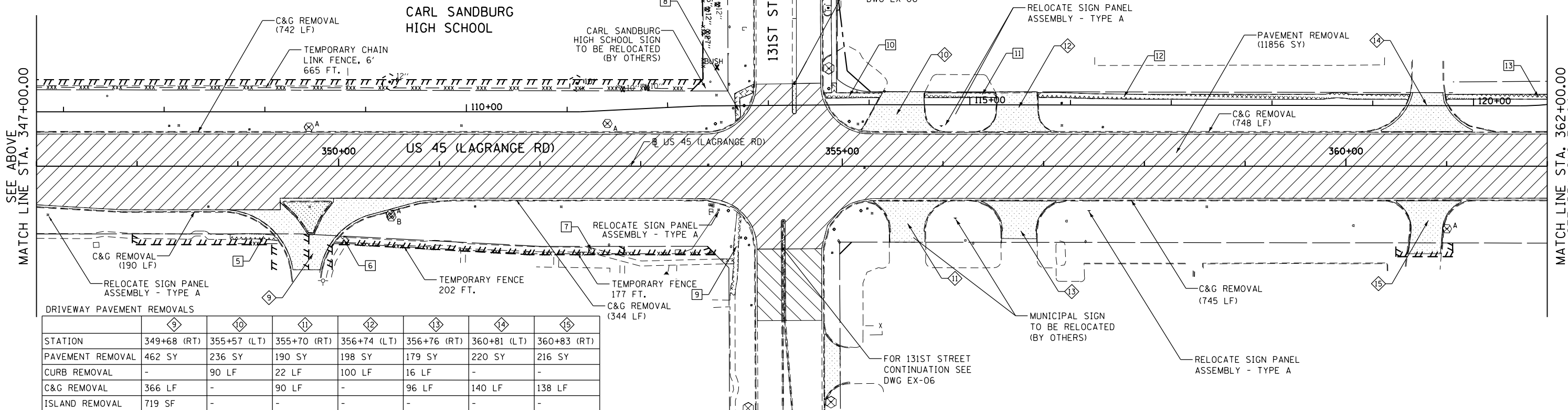
STATION	6
PAVEMENT REMOVAL	149 SY
CURB REMOVAL	-
C&G REMOVAL	-
ISLAND REMOVAL	246 SF

REMOVAL LEGEND

- PAVEMENT REMOVAL
- HOT MIX ASPHALT SURFACE REMOVAL
- PAVED SHOULDER REMOVAL
- MEDIAN OR ISLAND REMOVAL
- DRIVEWAY PAVEMENT REMOVAL
- SIDEWALK REMOVAL
- PARKING LOT PAVEMENT REMOVAL
- TREE REMOVAL (ACRES)
- SELECTIVE CLEARING (S.F.)
- TREE REMOVAL (UNIT DIAMETER)
- TREE PROTECTION (UNIT DIAMETER) - TEMPORARY FENCE AND TREE ROOT PRUNING
- REMOVE SIGN PANEL ASSEMBLY - (TYPE SPECIFIED)
- MAIL BOX REMOVAL AND RELOCATION (NOT PAID SEPARATELY)

SIDWALK REMOVALS

STATION	5	6	7	8	9	10	11	12	13
STATION	348+92.4	349+97.0	352+48.2	353+93.2	353+87.4	354+82.1	355+81.7	356+94.2	360+99.9
STATION	349+39.8	350+09.9	352+76.4	354+12.0	353+95.7	355+39.8	356+52.9	360+63.4	362+00.0
AREA	235 SF	75 SF	95 SF	239 SF	448 SF	330 SF	347 SF	1816 SF	483 SF



DRIVEWAY PAVEMENT REMOVALS

STATION	9	10	11	12	13	14	15
PAVEMENT REMOVAL	462 SY	236 SY	190 SY	198 SY	179 SY	220 SY	216 SY
CURB REMOVAL	-	90 LF	22 LF	100 LF	16 LF	-	-
C&G REMOVAL	366 LF	-	90 LF	-	96 LF	140 LF	138 LF
ISLAND REMOVAL	719 SF	-	-	-	-	-	-

100 S. WACKER DR.
 100 S. WACKER DR.
 CHICAGO, IL 60606
 TEL (312) 939-1000
 FAX (312) 939-4998



FILE NAME = D160M62-SHT-REM03.dgn	USER NAME = Anthony.Plutz	DESIGNED - BFH	REVISED -
PLOT SCALE = 100.000000' / 1"	CHECKED - MJT	DRAWN - BFH	REVISED -
SHT_DOUBLE PLAN	PLOT DATE = 3/12/2013	DATE - 03/13/13	REVISED -

STATE OF ILLINOIS
DEPARTMENT OF TRANSPORTATION

EXISTING PLAN AND REMOVALS - US 55 (LAGRANGE ROAD)

SCALE: 1"=50' SHEET 3 OF 4 SHEETS STA. 332+00.00 TO STA. 362+00.00

F.A.P. RTE.	SECTION	COUNTY	TOTAL SHEETS	SHEET NO.
330	103R-5	COOK	778	50
EX-03			CONTRACT NO. 60M62	
ILLINOIS FED. AID PROJECT				