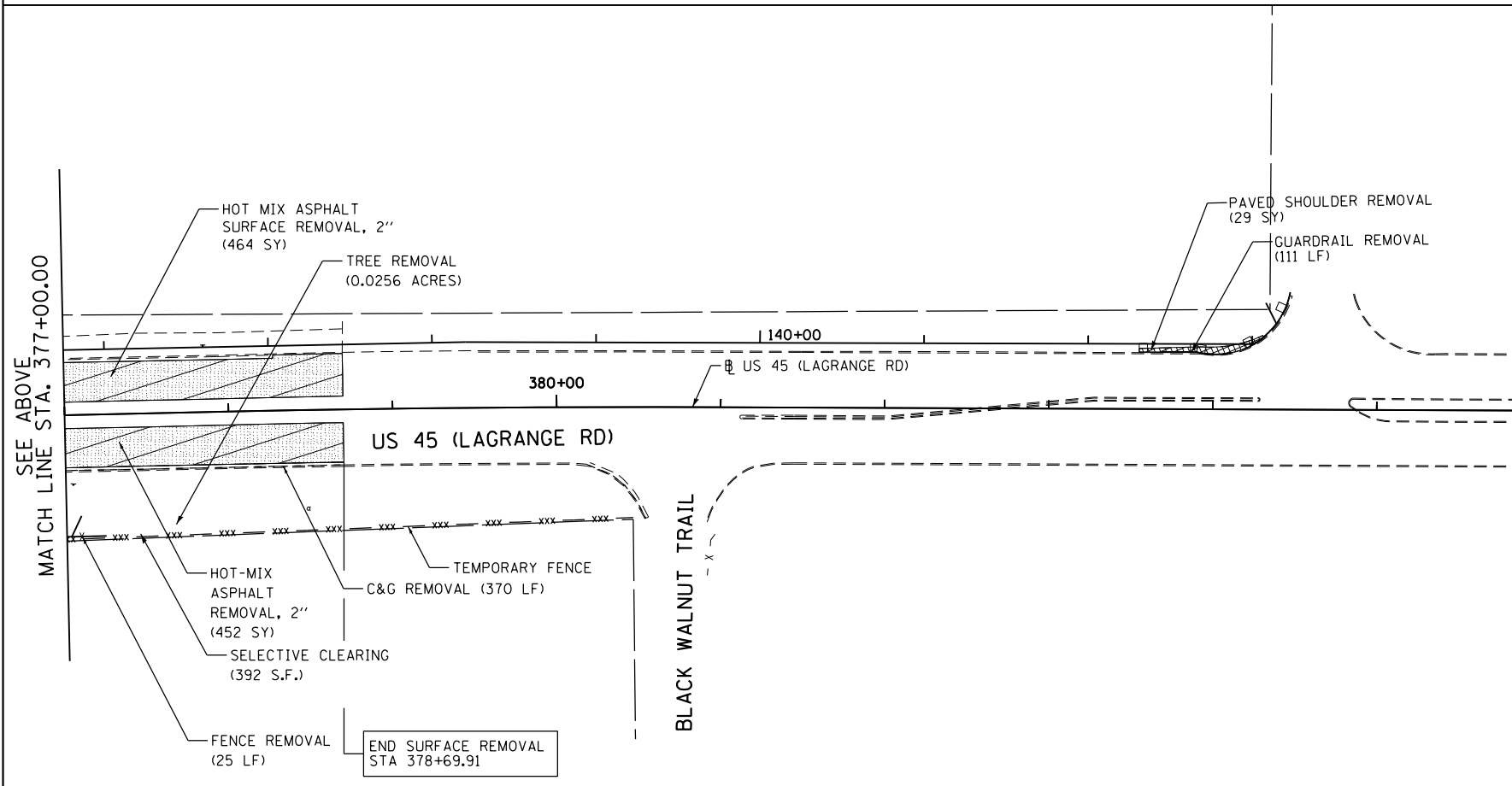
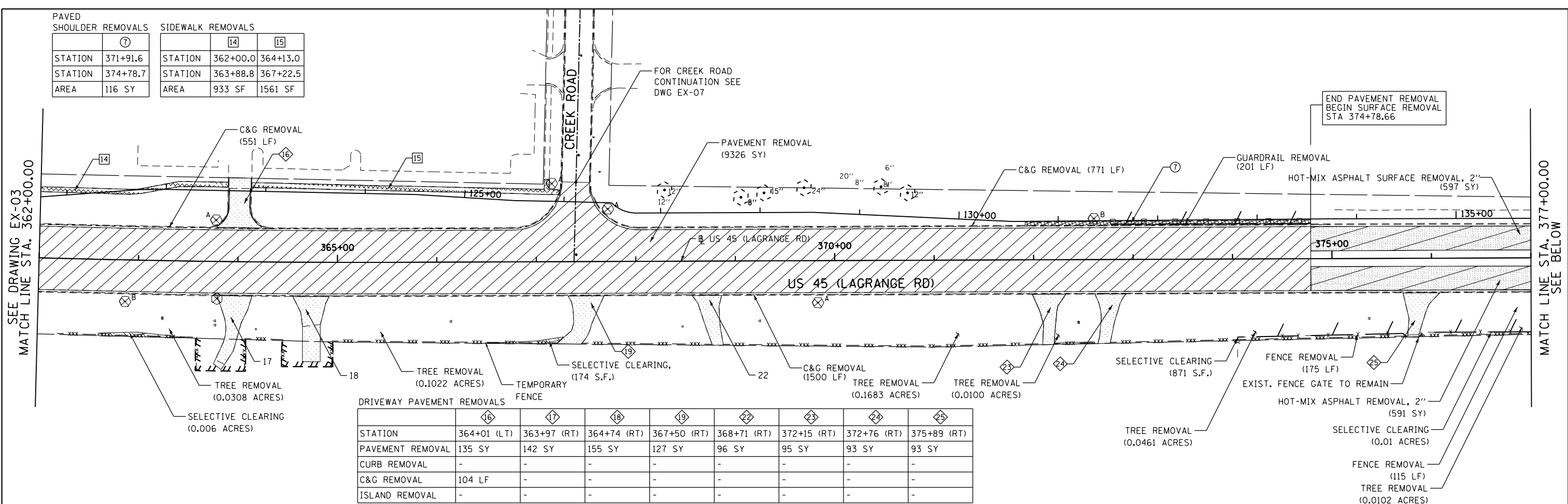


PAVED SHOULDER REMOVALS		SIDEWALK REMOVALS	
	⑦	⑭	⑮
STATION	371+91.6	362+00.0	364+13.0
STATION	374+78.7	363+88.8	367+22.5
AREA	116 SY	933 SF	1561 SF



**REMOVAL LEGEND**

- PAVEMENT REMOVAL
- HOT MIX ASPHALT SURFACE REMOVAL
- PAVED SHOULDER REMOVAL
- MEDIAN OR ISLAND REMOVAL
- DRIVEWAY PAVEMENT REMOVAL
- SIDEWALK REMOVAL
- PARKING LOT PAVEMENT REMOVAL
- TREE REMOVAL (ACRES)
- SELECTIVE CLEARING (S.F.)
- TREE REMOVAL (UNIT DIAMETER)
- TREE PROTECTION (UNIT DIAMETER) - TEMPORARY FENCE AND TREE ROOT PRUNING
- REMOVE SIGN PANEL ASSEMBLY - (TYPE SPECIFIED)
- MAIL BOX REMOVAL AND RELOCATION (NOT PAID SEPARATELY)

**NOTES:**

1. THE CONTRACTOR SHALL CONTACT THE ROADSIDE DEVELOPMENT UNIT IN THE BUREAU OF MAINTENANCE AT (847) 705-4171 AT LEAST 72 HOURS IN ADVANCE OF SELECTIVE CLEARING WORK TO ASSIST WITH MARKING OF TREES TO BE SAVED.
2. TEMPORARY FENCE USED IN TREE PROTECTION SHALL BE LOCATED A MINIMUM OF 1 FOOT OUTSIDE THE DRIPLINE OF THE TREE TO BE PROTECTED AND IN NO CASE CLOSER THAN 5 FEET TO THE TRUNK OF ANY TREE.
3. IN AREAS OF SELECTIVE CLEARING, MULCH METHOD 2 (ACRES) AND WEED CONTROL, PRE-EMERGENT GRANULAR HERBICIDE (ACRES) IS TO BE APPLIED.
4. SEE EROSION CONTROL PLANS FOR TEMPORARY FENCE LIMITS AND "NO INTRUSION" SIGNING LOCATIONS.

100 S. WACKER DR.  
 SUITE 600  
 CHICAGO, IL 60606  
 TEL (312) 939-1000  
 FAX (312) 939-4998  
**URS**

FILE NAME = D:\6062-SHT-REM04.dgn	USER NAME = Anthony.Plutz	DESIGNED - BFH	REVISED -
PLOT SCALE = 100.000000' / 1" =	CHECKED - MJT	DRAWN - BFH	REVISED -
PLOT DATE = 3/12/2013	DATE - 03/13/13		REVISED -

**STATE OF ILLINOIS  
DEPARTMENT OF TRANSPORTATION**

**EXISTING PLAN AND REMOVALS - US 45 (LAGRANGE ROAD)**

SCALE: 1"=50'    SHEET 4 OF 4 SHEETS    STA. 362+00.00 TO STA. END

F.A.P. RTE.	SECTION	COUNTY	TOTAL SHEETS	SHEET NO.
330	103R-5	COOK	778	51
<b>EX-04</b>			<b>CONTRACT NO. 60M62</b>	
ILLINOIS FED. AID PROJECT				