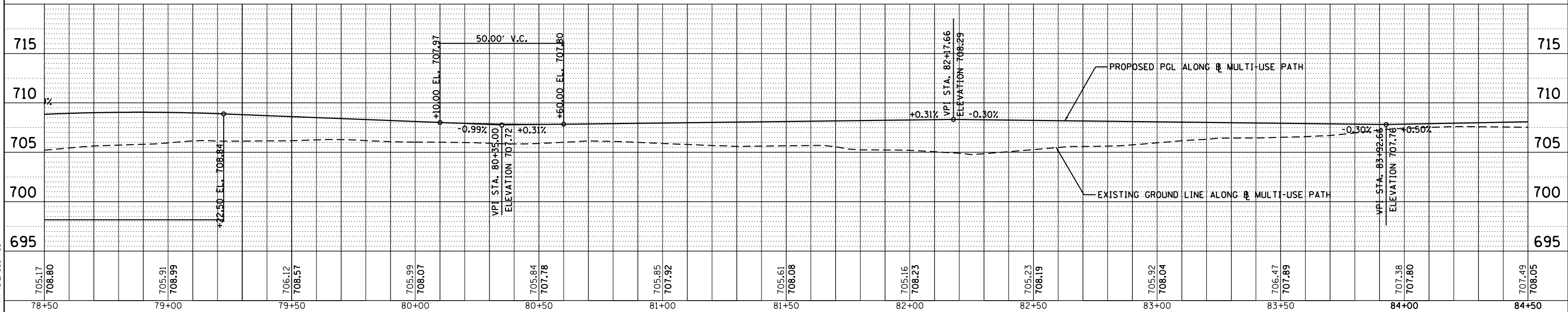
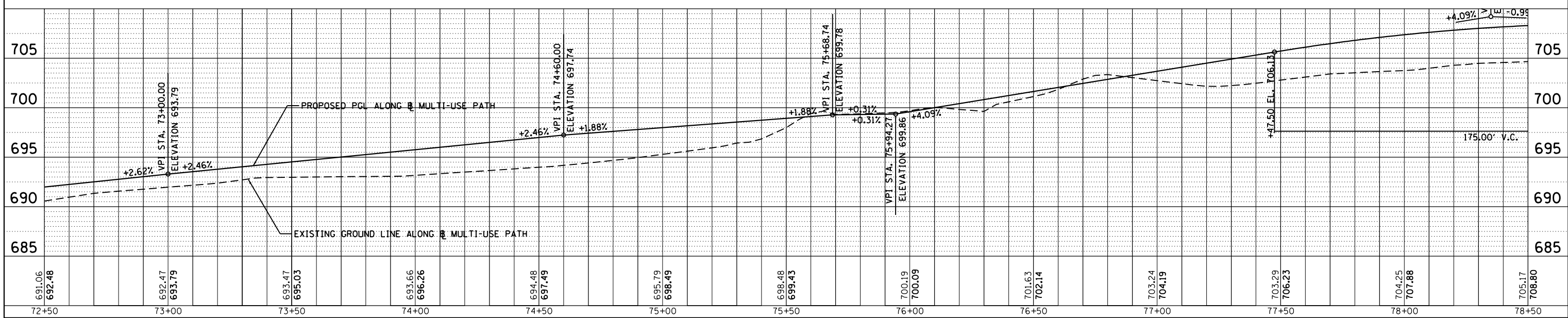
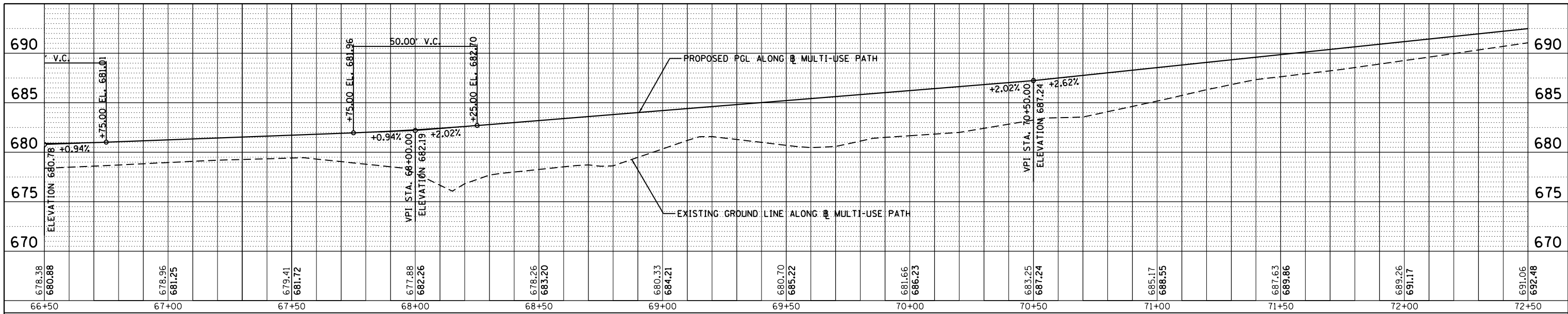


PROFILE NO.	DATE
REVISIONS	
BY	
DESIGNED	
CHECKED	
DRAWN	
PLOTTED	
GRADES CHECKED	
STRUCTURE NOTATIONS CHKD	
NO.	

100 S. WACKER DR.
SUITE 500
CHICAGO, IL 60606
TEL (312) 939-4000
FAX (312) 939-4099



FILE NAME = D160M62-SHT-PROFILE02.dgn	USER NAME = Anthony.Plutz	DESIGNED - JTF	REVISED -
Default		DRAWN - JTF	REVISED -
		CHECKED - MJT	REVISED -
		DATE - 03/13/13	REVISED -

STATE OF ILLINOIS
DEPARTMENT OF TRANSPORTATION

PROPOSED PATH PROFILE - US 45 (LAGRANGE ROAD)

SCALE: 1"=20' SHEET 2 OF 6 SHEETS STA. 66+50 TO STA. 84+50

F.A.P. RTE. 330	SECTION 103R-5	COUNTY COOK	TOTAL SHEETS 778	SHEET NO. 81
FR-02		CONTRACT NO. 60M62		
ILLINOIS FED. AID PROJECT				