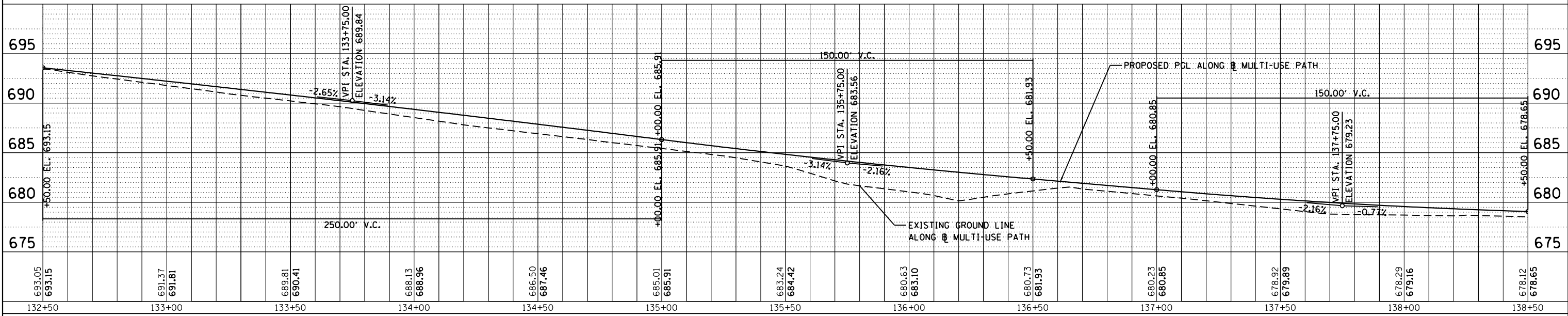
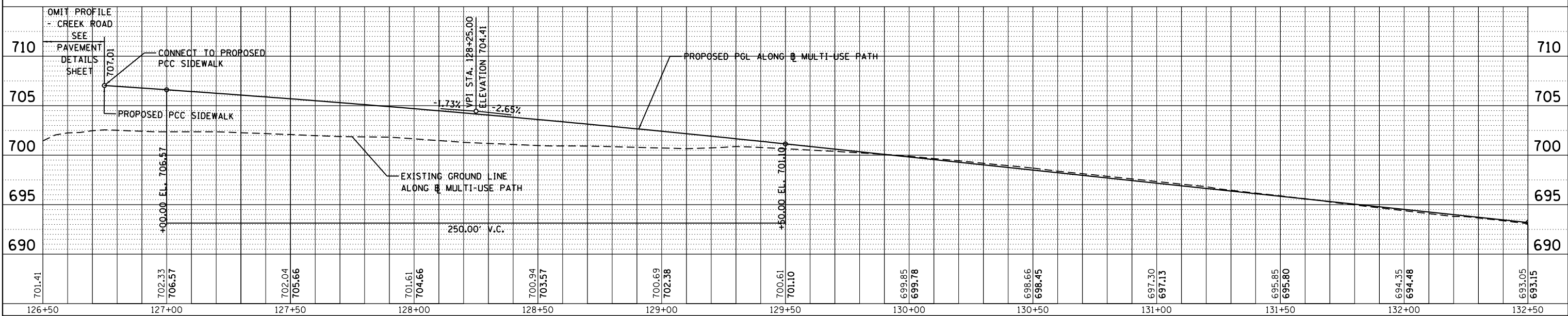
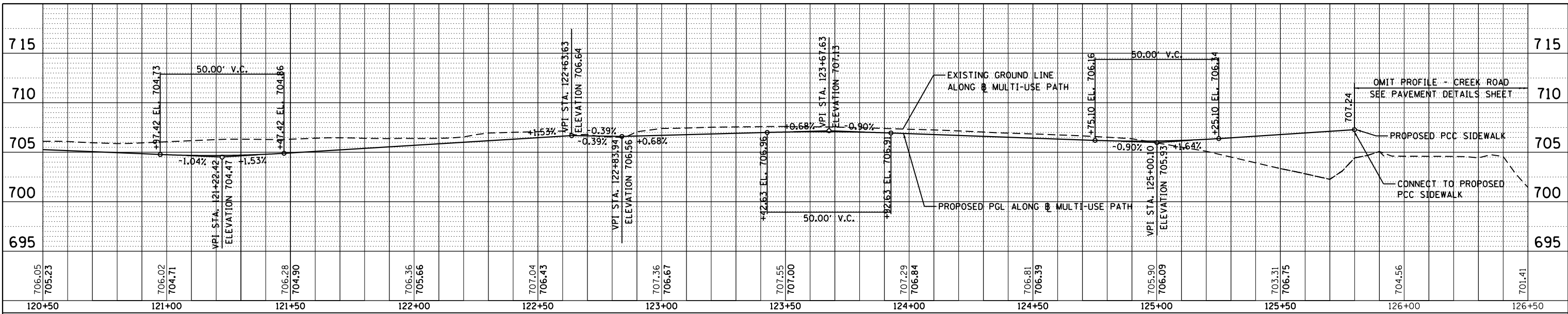


PROFILE NO.	DATE
SUBMITTED	
PLOTTED	
GRADES CHECKED	
STRUCTURE NOTATIONS CHK'D	
NO.	

100 S. WACKER DR.
SUITE 500
CHICAGO, IL 60606
TEL (312) 939-4000
FAX (312) 939-4098



FILE NAME =	USER NAME = Anthony.Plutz	DESIGNED - JTF	REVISED -
D160M62-SHT-PROFILE05.dgn		DRAWN - JTF	REVISED -
Default		CHECKED - MJT	REVISED -
		DATE - 03/13/13	REVISED -

STATE OF ILLINOIS
DEPARTMENT OF TRANSPORTATION

PROPOSED PATH PROFILE - US 45 (LAGRANGE ROAD)
SCALE: 1"=20' SHEET 5 OF 6 SHEETS STA. 120+50 TO STA. 138+50

F.A.P. RTE.	SECTION	COUNTY	TOTAL SHEETS	SHEET NO.
330	103R-5	COOK	778	84
FR-05		CONTRACT NO. 60M62		
ILLINOIS FED. AID PROJECT				