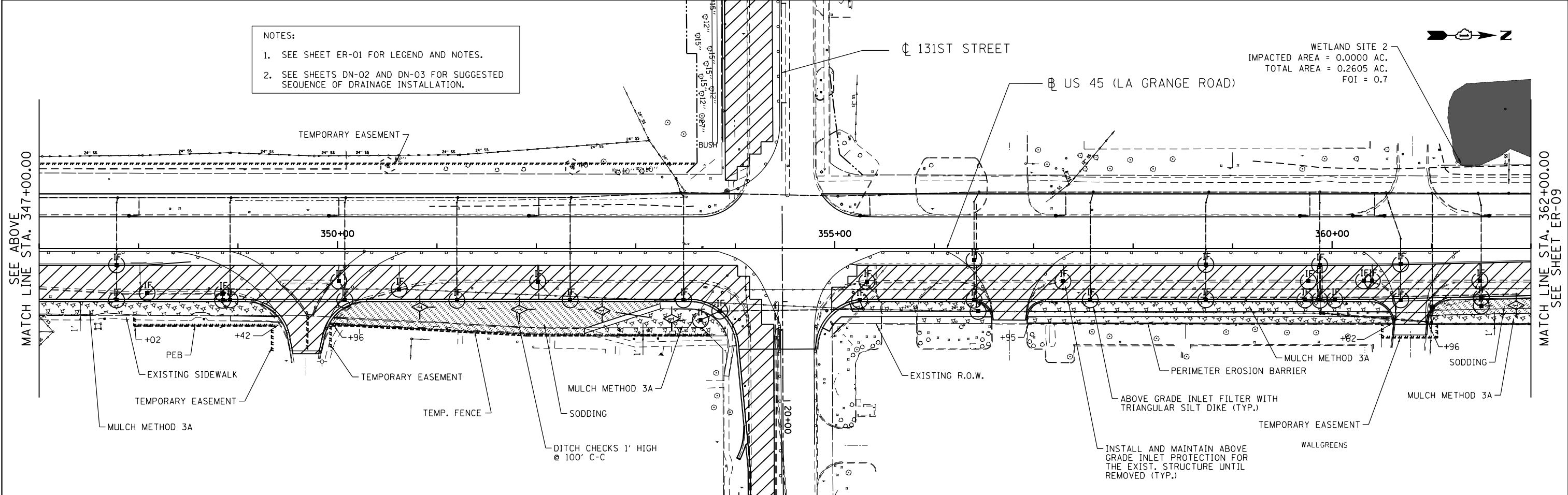


- (P-15) 5'- 12" TEMPORARY STORM SEWER
CLASS A, TYPE 2, SLOPE TO DRAIN (TBF= 2 CU YD)
- (P-16) 11'- 12" TEMPORARY STORM SEWER
CLASS A, TYPE 2, SLOPE TO DRAIN (TBF= 10 CU YD)
- (P-18) 7'- 12" TEMPORARY STORM SEWER
CLASS A, TYPE 2, SLOPE TO DRAIN (TBF= 2 CU YD)

NOTE: SEE SHEET ER-01 FOR LEGEND AND NOTES.

- NOTES:
1. SEE SHEET ER-01 FOR LEGEND AND NOTES.
 2. SEE SHEETS DN-02 AND DN-03 FOR SUGGESTED SEQUENCE OF DRAINAGE INSTALLATION.



WETLAND SITE 2
IMPACTED AREA = 0.0000 AC.
TOTAL AREA = 0.2605 AC.
FOI = 0.7

STATE OF ILLINOIS
DEPARTMENT OF TRANSPORTATION

EROSION AND SEDIMENT CONTROL PLAN
US 45 (LAGRANGE ROAD) - NORTH CONTRACT - STAGE 1

FILE NAME = D160M62-SHT-ER0508_Stage 1.dgn	USER NAME = Frank.Stallone	DESIGNED - LN	REVISED -
		DRAWN - MP	REVISED -
		CHECKED - WI	REVISED -
		DATE - 02/08/2013	REVISED -

SCALE: 1"=50' SHEET NO. 3 OF 4 SHEETS STA. 332+00.00 TO STA. 362+00.00

F.A.P. R.T.E.	SECTION	COUNTY	TOTAL SHEETS	SHEET NO.
330	103R-5	COOK	778	131
ER-08		CONTRACT NO. 60M62		
ILLINOIS FED. AID PROJECT				