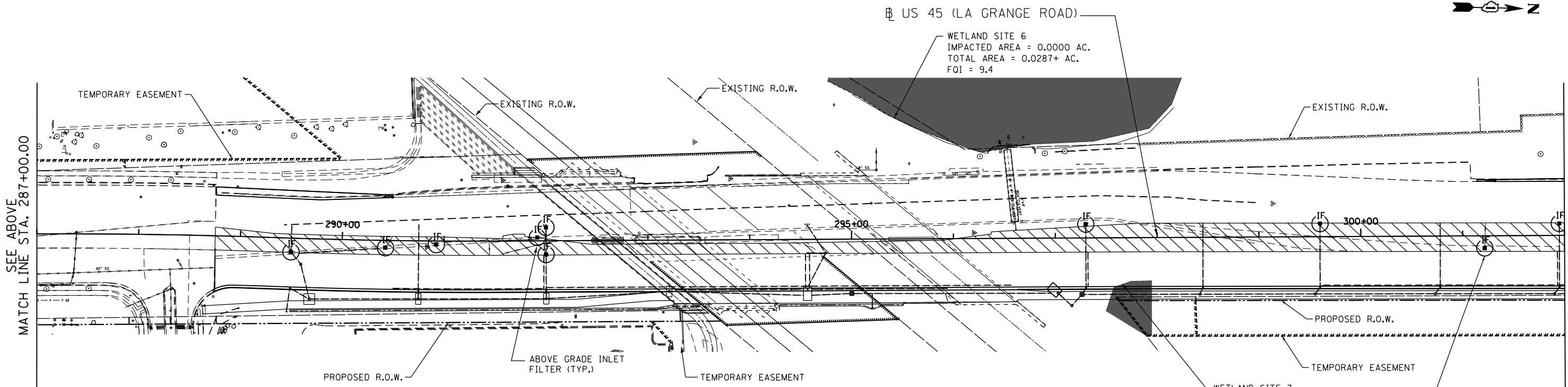


NOTE: SEE SHEET ER-01 FOR LEGEND AND NOTES.

MAINTAIN PERIMETER EROSION BARRIER AND EROSION CONTROL ITEMS INSTALLED DURING PRE-STAGE AND STAGE 1 UNLESS OTHERWISE NOTED. ITEMS FROM PREVIOUS STAGES NOT SHOWN FOR CLARITY (TYP.)

MATCH LINE STA. 287+00.00
SEE BELOW



SEE ABOVE
MATCH LINE STA. 287+00.00

MATCH LINE STA. 302+00.00
SEE SHEET ER-11

WETLAND SITE 6
IMPACTED AREA = 0.0000 AC.
TOTAL AREA = 0.0287+ AC.
FOI = 9.4

WETLAND SITE 7
IMPACTED AREA = 0.0402 AC.
TOTAL AREA = 0.0402 AC.
FOI = 4.0

INSTALL AND MAINTAIN ABOVE GRADE INLET PROTECTION FOR THE EXIST. STRUCTURE UNTIL REMOVED (TYP.)

APEX
CONSULTING ENGINEERS, LLC
111 E. Wacker Drive, Suite 520
Chicago, IL 60601

FILE NAME = D160M62-SHT-ER05010_Stage 2.dgn	USER NAME = Frank.Stallone	DESIGNED - LN	REVISED -
		DRAWN - MP	REVISED -
		CHECKED - WI	REVISED -
		DATE - 02/08/2013	REVISED -

**STATE OF ILLINOIS
DEPARTMENT OF TRANSPORTATION**

**EROSION AND SEDIMENT CONTROL PLAN
US 45 (LAGRANGE ROAD) NORTH CONTRACT - STAGE 2**

SCALE: 1"=50' SHEET NO. 1 OF 4 SHEETS STA. BEGIN TO STA. 302+00.00

F.A.P. RTE.	SECTION	COUNTY	TOTAL SHEETS	SHEET NO.
330	103R-5	COOK	778	133
ER-10			CONTRACT NO. 60M62	
ILLINOIS FED. AID PROJECT				

D160M62-SHT-ER05010_Stage 2.dgn 3/14/2013 6:17:01 PM