

SEE DRAWING DU-02
 MATCH LINE STA. 296+00.00

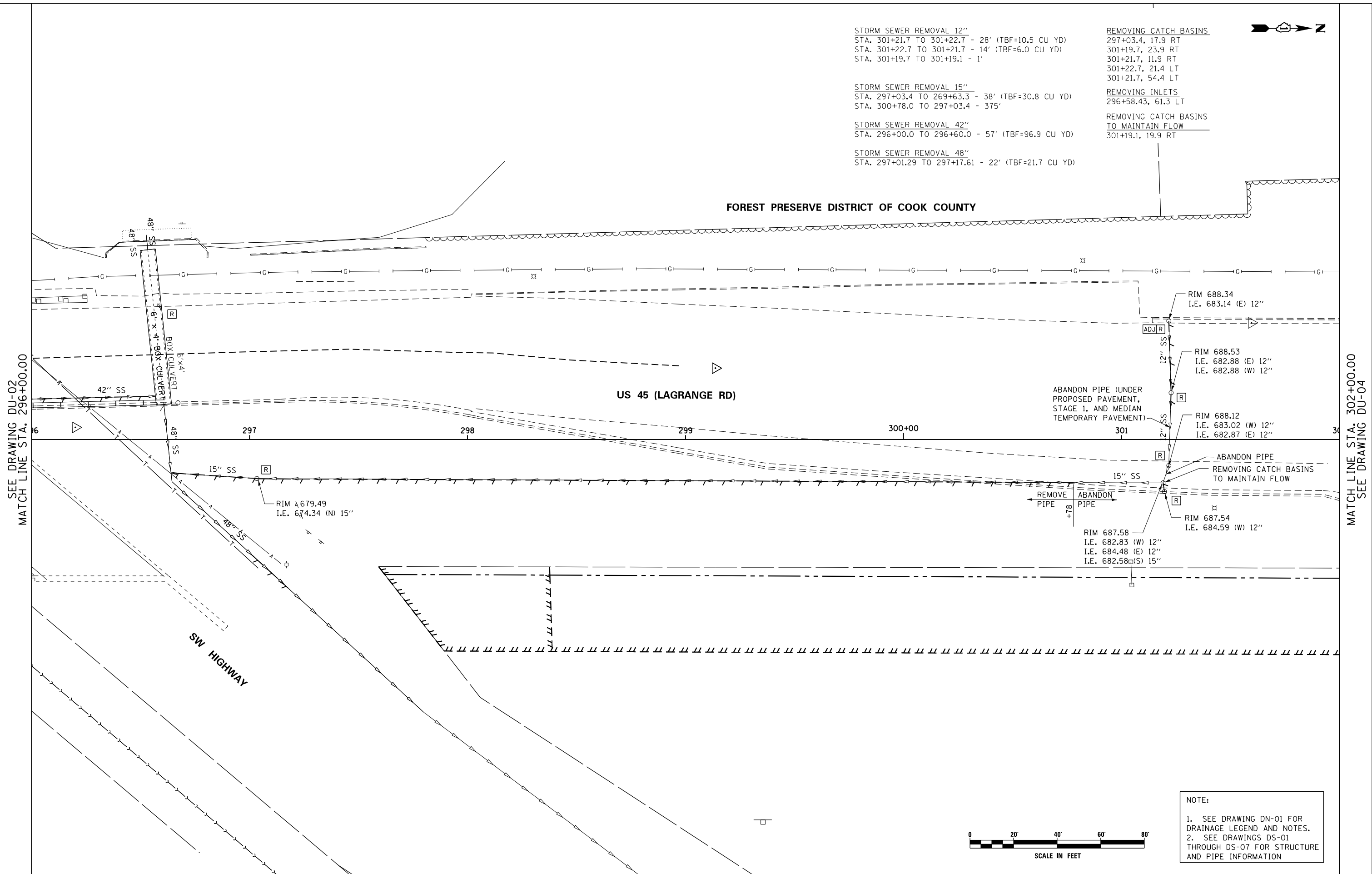
| | | | |
|----------------------------|-------------------------------|-----------------|-----------|
| FILE NAME = | USER NAME = Anthony.Plutz | DESIGNED - EJD | REVISED - |
| D160M62-SHT-DRAINE.X03.dgn | | DRAWN - EJD | REVISED - |
| | PLOT SCALE = 40.000000' / in. | CHECKED - JWM | REVISED - |
| SHT.PLAN | PLOT DATE = 3/13/2013 | DATE - 03/13/13 | REVISED - |

**STATE OF ILLINOIS
 DEPARTMENT OF TRANSPORTATION**

EXISTING DRAINAGE PLAN - US 45 (LAGRANGE ROAD)

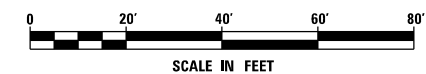
SCALE: 1"=20' SHEET 3 OF 17 SHEETS STA. 296+00.00 TO STA. 302+00.00

| F.A.P. RTE. | SECTION | COUNTY | TOTAL SHEETS | SHEET NO. |
|---------------------------|---------|---------------------------|--------------|-----------|
| 330 | 103R-5 | COOK | 778 | 158 |
| DU-03 | | CONTRACT NO. 60M62 | | |
| ILLINOIS FED. AID PROJECT | | | | |



- STORM SEWER REMOVAL 12"
 STA. 301+21.7 TO 301+22.7 - 28' (TBF=10.5 CU YD)
 STA. 301+22.7 TO 301+21.7 - 14' (TBF=6.0 CU YD)
 STA. 301+19.7 TO 301+19.1 - 1'
- STORM SEWER REMOVAL 15"
 STA. 297+03.4 TO 269+63.3 - 38' (TBF=30.8 CU YD)
 STA. 300+78.0 TO 297+03.4 - 375'
- STORM SEWER REMOVAL 42"
 STA. 296+00.0 TO 296+60.0 - 57' (TBF=96.9 CU YD)
- STORM SEWER REMOVAL 48"
 STA. 297+01.29 TO 297+17.61 - 22' (TBF=21.7 CU YD)

- REMOVING CATCH BASINS
 297+03.4, 17.9 RT
 301+19.7, 23.9 RT
 301+21.7, 11.9 RT
 301+22.7, 21.4 LT
 301+21.7, 54.4 LT
- REMOVING INLETS
 296+58.43, 61.3 LT
- REMOVING CATCH BASINS TO MAINTAIN FLOW
 301+19.1, 19.9 RT



NOTE:
 1. SEE DRAWING DN-01 FOR DRAINAGE LEGEND AND NOTES.
 2. SEE DRAWINGS DS-01 THROUGH DS-07 FOR STRUCTURE AND PIPE INFORMATION

MATCH LINE STA. 302+00.00
 SEE DRAWING DU-04