

STORM SEWER REMOVAL - 12"
 STA. 350+01.4 TO 350+01.3 - 64' (TBF=18.2 CU YD)
 STA. 350+01.3 TO 350+04.5 - 6' (TBF=2.9 CU YD)
 STA. 350+62.3 TO 350+61.9 - 39' (TBF=20.2 CU YD)
 STA. 352+02.5 TO 352+01.0 - 62' (TBF=18.6 CU YD)
 STA. 352+01.0 TO 352+05.1 - 15' (TBF=8.5 CU YD)
 STA. 353+95.2 TO 354+11.7 - 47' (TBF=15.4 CU YD)
 STA. 354+11.7 TO 354+10.4 - 103' (TBF=24.4 CU YD)
 STA. 354+14.5 TO 354+12.2 - 26' (TBF=7.2 CU YD)
 STA. 355+35.6 TO 355+32.7 - 61' (TBF=17.2 CU YD)

STORM SEWER REMOVAL - 15"
 STA. 353+52.4 TO 355+32.5 - 177' (TBF=40.7 CU YD)

STORM SEWER REMOVAL - 18"
 STA. 354+10.4 TO 355+32.7 - 119' (TBF=55.9 CU YD)
 STA. 355+32.5 TO 356+00.0 - 80' (TBF=63.1 CU YD)
 STA. 355+28.8 TO 356+00.0 - 65' (TBF=22.0 CU YD)

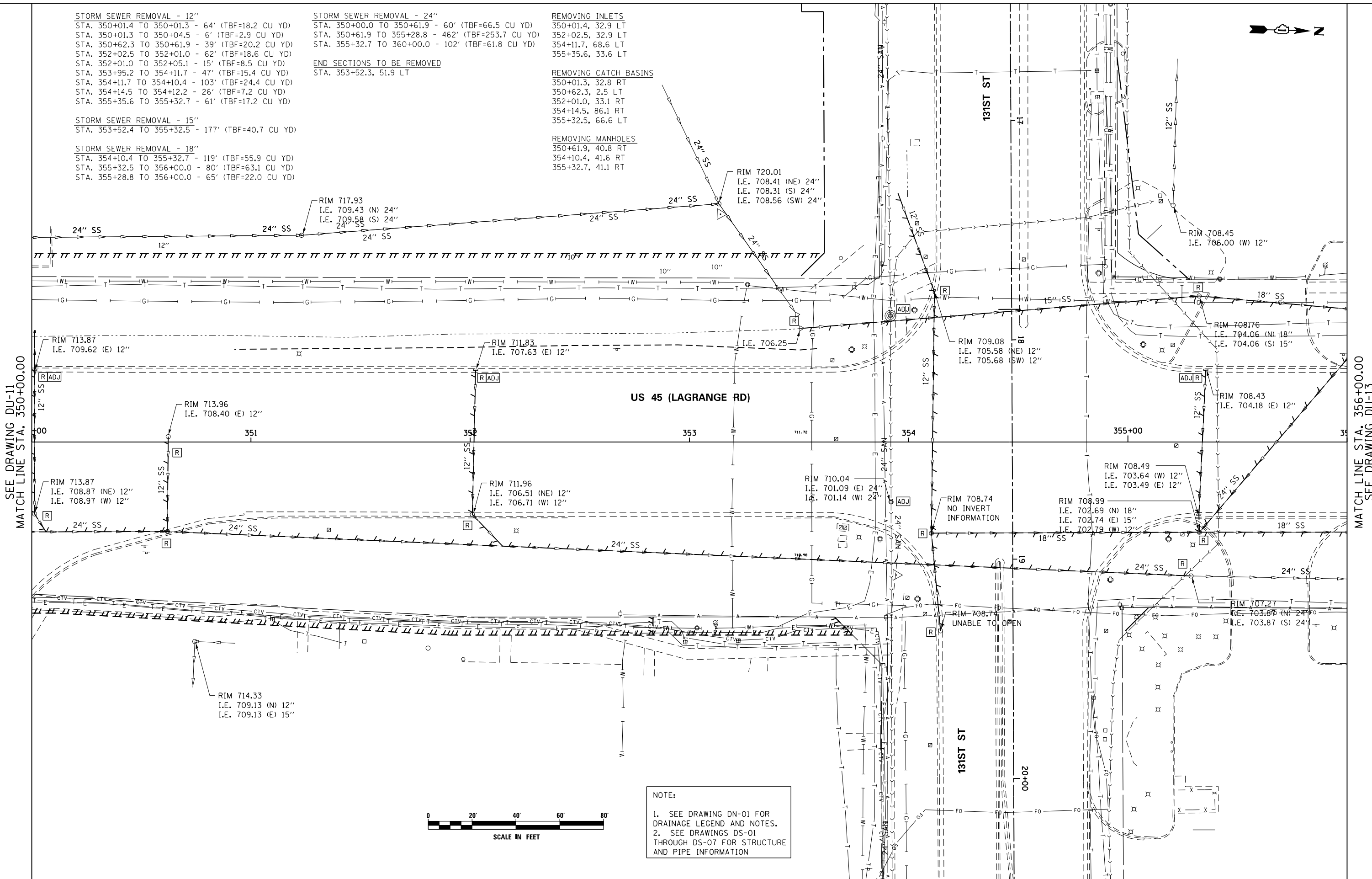
STORM SEWER REMOVAL - 24"
 STA. 350+00.0 TO 350+61.9 - 60' (TBF=66.5 CU YD)
 STA. 350+61.9 TO 355+28.8 - 462' (TBF=253.7 CU YD)
 STA. 355+32.7 TO 360+00.0 - 102' (TBF=61.8 CU YD)

END SECTIONS TO BE REMOVED
 STA. 353+52.3, 51.9 LT

REMOVING INLETS
 350+01.4, 32.9 LT
 352+02.5, 32.9 LT
 354+11.7, 68.6 LT
 355+35.6, 33.6 LT

REMOVING CATCH BASINS
 350+01.3, 32.8 RT
 350+62.3, 2.5 LT
 352+01.0, 33.1 RT
 354+14.5, 86.1 RT
 355+32.5, 66.6 LT

REMOVING MANHOLES
 350+61.9, 40.8 RT
 354+10.4, 41.6 RT
 355+32.7, 41.1 RT



SEE DRAWING DU-11
 MATCH LINE STA. 350+00.00

MATCH LINE STA. 356+00.00
 SEE DRAWING DU-13

100 S. WACKER DR.
 SUITE 600
 CHICAGO, IL 60606
 TEL (312) 939-1000
 FAX (312) 939-4998



| | | | |
|---|---------------------------|----------------|-----------|
| FILE NAME = D160M62-SHT-DRAINE12.dgn | USER NAME = Anthony.Plutz | DESIGNED - EJD | REVISED - |
| PLOT SCALE = 48.000000' / in. | CHECKED - JWM | DRAWN - EJD | REVISED - |
| PLOT DATE = 3/13/2013 | DATE - 03/13/13 | REVISIONS | REVISED - |

STATE OF ILLINOIS
 DEPARTMENT OF TRANSPORTATION

EXISTING DRAINAGE PLAN - US 55 (LAGRANGE ROAD)
 SCALE: 1"=20' SHEET 12 OF 17 SHEETS STA. 350+00.00 TO STA. 356+00.00

| | | | | |
|---------------------------|----------------|--------------------|------------------|---------------|
| F.A.P. R.E. 330 | SECTION 103R-5 | COUNTY COOK | TOTAL SHEETS 778 | SHEET NO. 167 |
| DU-12 | | CONTRACT NO. 60M62 | | |
| ILLINOIS FED. AID PROJECT | | | | |