

STORM SEWER REMOVAL - 12"
 STA. 357+32.3 TO 357+29.5 - 64' (TBF=25.5 CU YD)
 STA. 357+29.5 TO 357+29.5 - 5' (TBF=4.3 CU YD)
 STA. 359+77.7 TO 359+89.2 - 10' (TBF=7.3 CU YD)
 STA. 359+76.3 TO 359+77.7 - 3' (TBF=2.3 CU YD)
 STA. 359+89.2 TO 361+77.8 - 185' (TBF=241.9 CU YD)
 STA. 359+89.2 TO 362+00.0 - 211' (TBF=155.5 CU YD)
 STA. 360+30.9 TO 360+42.7 - 11' (TBF=1.8 CU YD)
 STA. 360+42.7 TO 360+40.3 - 31' (TBF=5.0 CU YD)
 STA. 360+32.1 TO 360+40.3 - 6' (TBF=1.0 CU YD)
 STA. 360+40.3 TO 360+40.7 - 28' (TBF=5.7 CU YD)
 STA. 360+31.6 TO 360+40.7 - 7' (TBF=1.2 CU YD)
 STA. 360+40.7 TO 360+35.4 - 8' (TBF=5.9 CU YD)
 STA. 361+47.9 TO 361+49.0 - 30' (TBF=4.8 CU YD)
 STA. 361+49.0 TO 361+48.4 - 30' (TBF=7.2 CU YD)
 STA. 361+48.4 TO 361+43.5 - 6' (TBF=2.6 CU YD)

STORM SEWER REMOVAL 18"
 STA. 356+00.0 TO 356+18.1 - 16' (TBF=5.7 CU YD)
 STA. 356+00.0 TO 357+29.5 - 128' (TBF=57.9 CU YD)
 STA. 357+29.5 TO 359+88.2 - 257' (TBF=129.9 CU YD)

STORM SEWER REMOVAL 21"
 STA. 361+12.5 TO 361+00.8 - 14' (TBF=13.3 CU YD)

STORM SEWER REMOVAL 24"
 STA. 356+00.0 TO 356+18.1 - 26' (TBF=26.5 CU YD)
 STA. 359+89.2 TO 359+88.2 - 127' (TBF=197.3 CU YD)

STORM SEWER REMOVAL 36"
 STA. 359+88.2 TO 361+00.8 - 113' (TBF=281.3 CU YD)

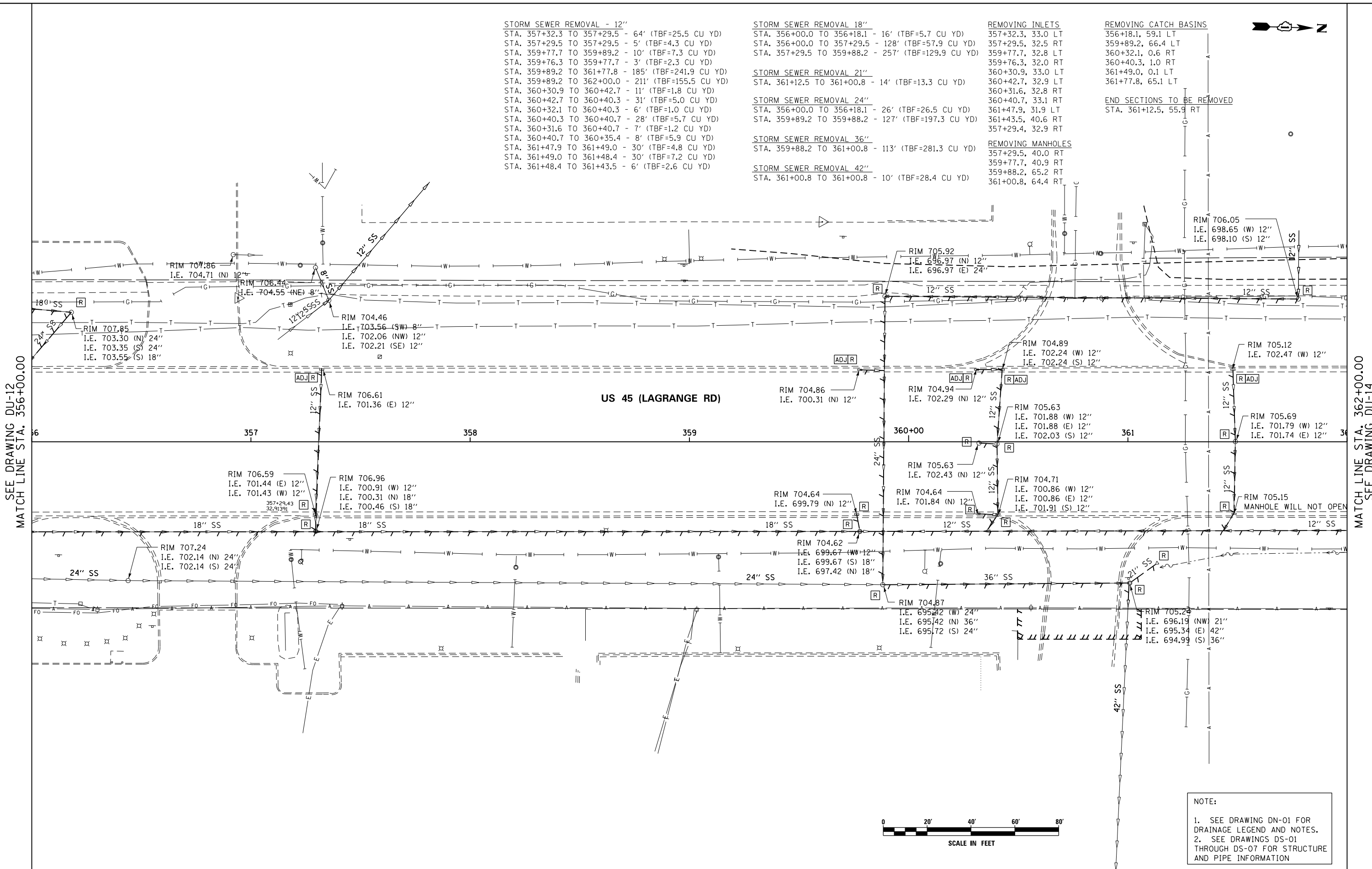
STORM SEWER REMOVAL 42"
 STA. 361+00.8 TO 361+00.8 - 10' (TBF=28.4 CU YD)

REMOVING INLETS
 357+32.3, 33.0 LT
 357+29.5, 32.5 RT
 359+77.7, 32.8 LT
 359+76.3, 32.0 RT
 360+30.9, 33.0 LT
 360+42.7, 32.9 LT
 360+31.6, 32.8 RT
 360+40.7, 33.1 RT
 361+47.9, 31.9 LT
 361+43.5, 40.6 RT
 357+29.4, 32.9 RT

REMOVING CATCH BASINS
 356+18.1, 59.1 LT
 359+89.2, 66.4 LT
 360+32.1, 0.6 RT
 360+40.3, 1.0 RT
 361+49.0, 0.1 LT
 361+77.8, 65.1 LT

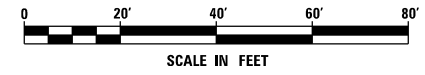
REMOVING MANHOLES
 357+29.5, 40.0 RT
 359+77.7, 40.9 RT
 359+88.2, 65.2 RT
 361+00.8, 64.4 RT

END SECTIONS TO BE REMOVED
 STA. 361+12.5, 55.9 RT



SEE DRAWING DU-12
 MATCH LINE STA. 356+00.00

MATCH LINE STA. 362+00.00
 SEE DRAWING DU-14



NOTE:
 1. SEE DRAWING DN-01 FOR DRAINAGE LEGEND AND NOTES.
 2. SEE DRAWINGS DS-01 THROUGH DS-07 FOR STRUCTURE AND PIPE INFORMATION

100 S. WACKER DR.
 SUITE 600
 CHICAGO, IL 60606
 TEL (312) 939-1000
 FAX (312) 939-4998

URS

| | | | | | | | | | | | | |
|---|---------------------------|----------------|-----------|---|---|-----------------------|----------------------------------|-----------------|----------------|--------------------|------------------|---------------|
| FILE NAME = D160M62-SHT-DRAINE13.dgn | USER NAME = Anthony.Plutz | DESIGNED - EJD | REVISED - | STATE OF ILLINOIS DEPARTMENT OF TRANSPORTATION | EXISTING DRAINAGE PLAN - US 45 (LAGRANGE ROAD) | | | F.A.P. RFE. 330 | SECTION 103R-5 | COUNTY COOK | TOTAL SHEETS 778 | SHEET NO. 168 |
| PLOT SCALE = 40.000000' / in. | CHECKED - JWM | REVISED - | REVISED - | | SCALE: 1"=20' | SHEET 13 OF 17 SHEETS | STA. 356+00.00 TO STA. 362+00.00 | DU-13 | | CONTRACT NO. 60M62 | | |
| PLOT DATE = 3/13/2013 | DATE - 03/13/13 | REVISED - | REVISED - | | ILLINOIS FED. AID PROJECT | | | | | | | |
| SHT_PLAN | | | | | | | | | | | | |