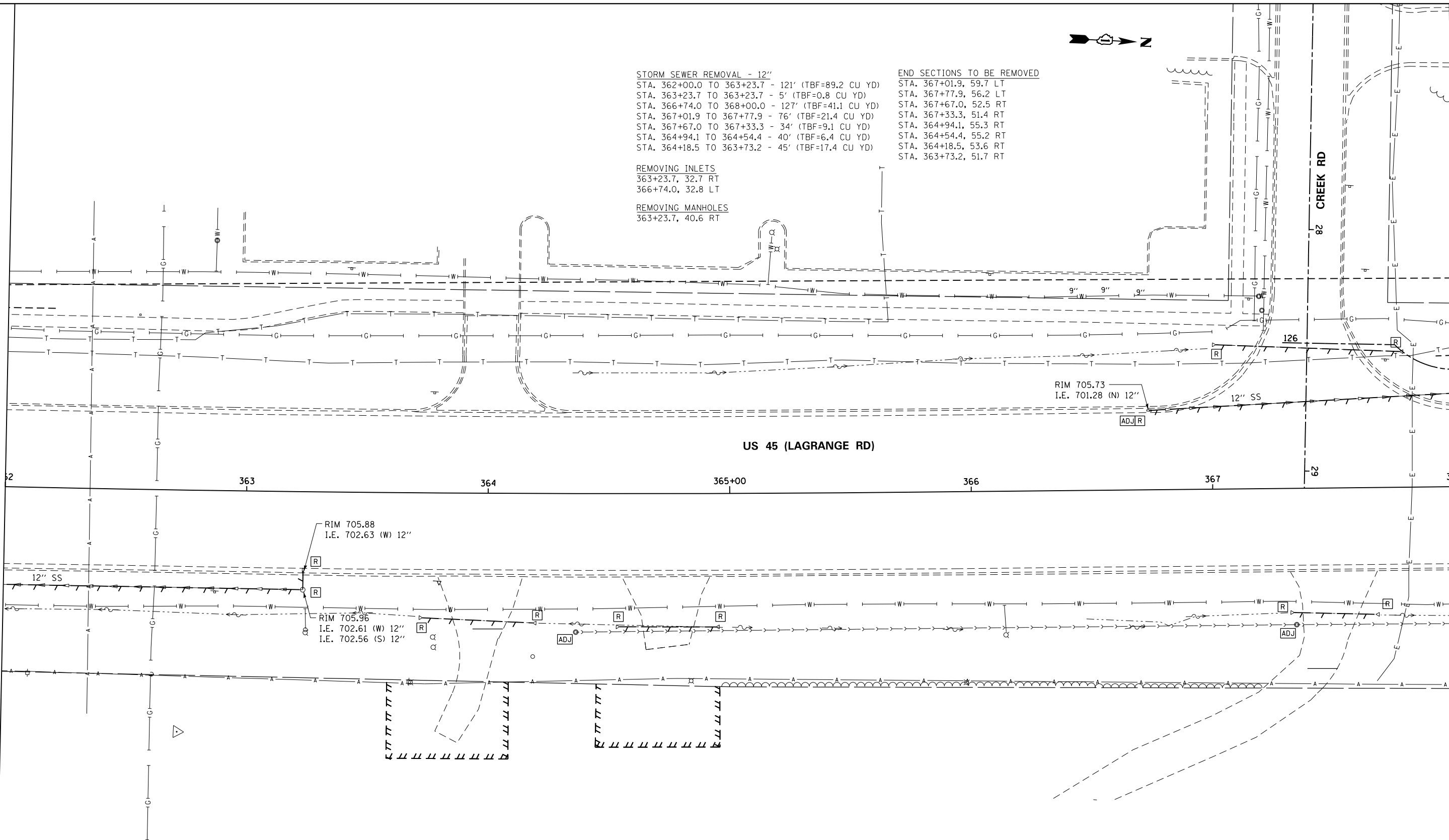


SEE DRAWING DU-13  
 MATCH LINE STA. 362+00.00



**STORM SEWER REMOVAL - 12"**  
 STA. 362+00.0 TO 363+23.7 - 121' (TBF=89.2 CU YD)  
 STA. 363+23.7 TO 363+23.7 - 5' (TBF=0.8 CU YD)  
 STA. 366+74.0 TO 368+00.0 - 127' (TBF=41.1 CU YD)  
 STA. 367+01.9 TO 367+77.9 - 76' (TBF=21.4 CU YD)  
 STA. 367+67.0 TO 367+33.3 - 34' (TBF=9.1 CU YD)  
 STA. 364+94.1 TO 364+54.4 - 40' (TBF=6.4 CU YD)  
 STA. 364+18.5 TO 363+73.2 - 45' (TBF=17.4 CU YD)

**REMOVING INLETS**  
 363+23.7, 32.7 RT  
 366+74.0, 32.8 LT

**REMOVING MANHOLES**  
 363+23.7, 40.6 RT

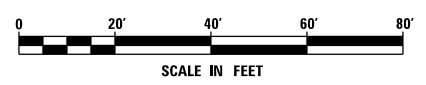
**END SECTIONS TO BE REMOVED**  
 STA. 367+01.9, 59.7 LT  
 STA. 367+77.9, 56.2 LT  
 STA. 367+67.0, 52.5 RT  
 STA. 367+33.3, 51.4 RT  
 STA. 364+94.1, 55.3 RT  
 STA. 364+54.4, 55.2 RT  
 STA. 364+18.5, 53.6 RT  
 STA. 363+73.2, 51.7 RT

US 45 (LAGRANGE RD)

RIM 705.88  
 I.E. 702.63 (W) 12"

RIM 705.96  
 I.E. 702.61 (W) 12"  
 I.E. 702.56 (S) 12"

RIM 705.73  
 I.E. 701.28 (N) 12"



**NOTE:**  
 1. SEE DRAWING DN-01 FOR DRAINAGE LEGEND AND NOTES.  
 2. SEE DRAWINGS DS-01 THROUGH DS-07 FOR STRUCTURE AND PIPE INFORMATION

MATCH LINE STA. 368+00.00  
 SEE DRAWING DU-15

FILE NAME = D160M62-SHT-DRAINEX14.dgn	USER NAME = Anthony.Plutz	DESIGNED - EJD	REVISED -
		DRAWN - EJD	REVISED -
	PLOT SCALE = 48.000000' / in.	CHECKED - JWM	REVISED -
SHT_PLAN	PLOT DATE = 3/13/2013	DATE - 03/13/13	REVISED -

**STATE OF ILLINOIS  
 DEPARTMENT OF TRANSPORTATION**

**EXISTING DRAINAGE PLAN - US 45 (LAGRANGE ROAD)**

SCALE: 1"=20' SHEET 14 OF 17 SHEETS STA. 362+00.00 TO STA. 368+00.00

F.A.P. RTE.	SECTION	COUNTY	TOTAL SHEETS	SHEET NO.
330	103R-5	COOK	778	169
<b>DU-14</b>			<b>CONTRACT NO. 60M62</b>	
ILLINOIS FED. AID PROJECT				