



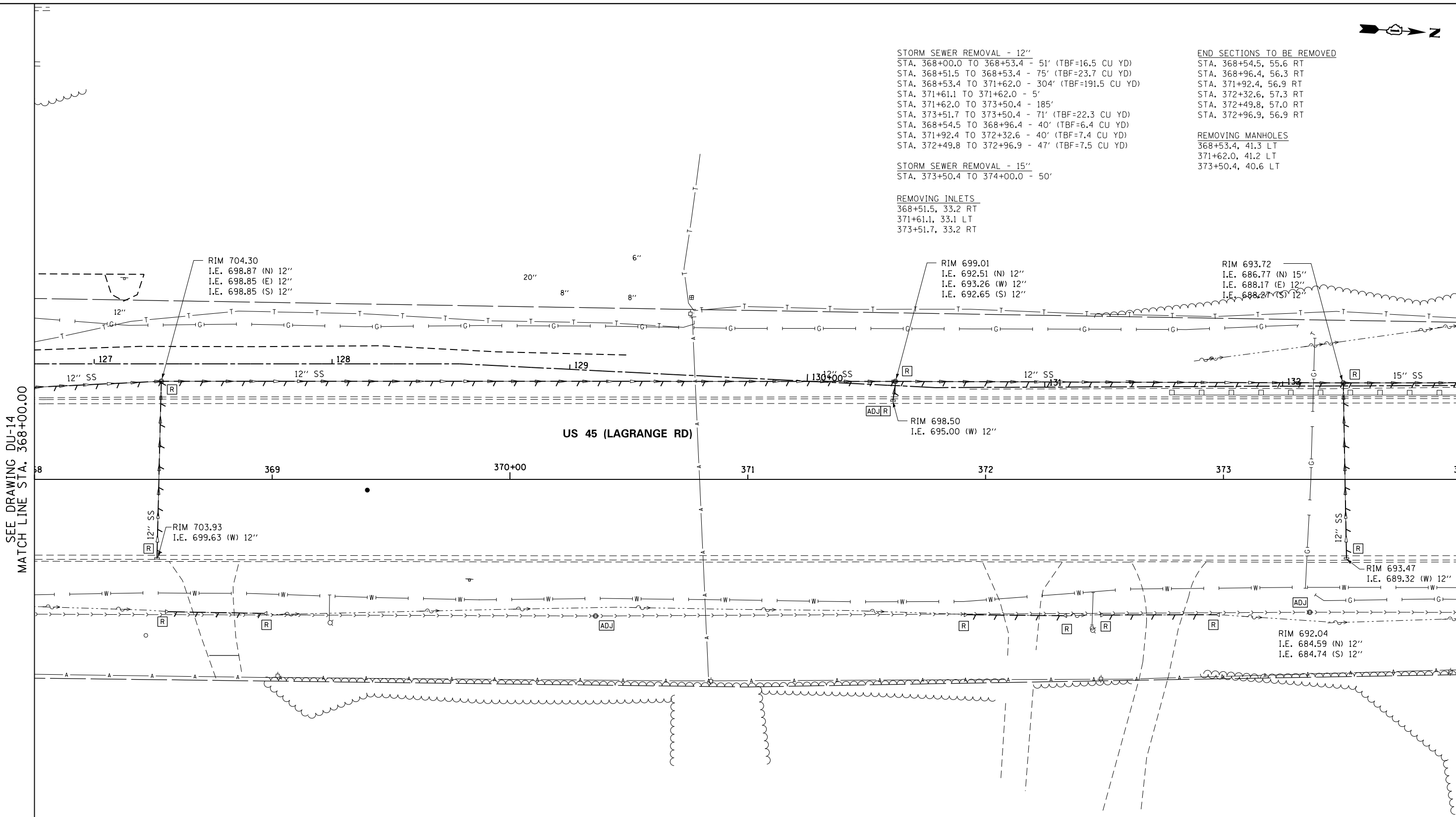
STORM SEWER REMOVAL - 12"  
 STA. 368+00.0 TO 368+53.4 - 51' (TBF=16.5 CU YD)  
 STA. 368+51.5 TO 368+53.4 - 75' (TBF=23.7 CU YD)  
 STA. 368+53.4 TO 371+62.0 - 304' (TBF=191.5 CU YD)  
 STA. 371+61.1 TO 371+62.0 - 5'  
 STA. 371+62.0 TO 373+50.4 - 185'  
 STA. 373+51.7 TO 373+50.4 - 71' (TBF=22.3 CU YD)  
 STA. 368+54.5 TO 368+96.4 - 40' (TBF=6.4 CU YD)  
 STA. 371+92.4 TO 372+32.6 - 40' (TBF=7.4 CU YD)  
 STA. 372+49.8 TO 372+96.9 - 47' (TBF=7.5 CU YD)

END SECTIONS TO BE REMOVED  
 STA. 368+54.5, 55.6 RT  
 STA. 368+96.4, 56.3 RT  
 STA. 371+92.4, 56.9 RT  
 STA. 372+32.6, 57.3 RT  
 STA. 372+49.8, 57.0 RT  
 STA. 372+96.9, 56.9 RT

STORM SEWER REMOVAL - 15"  
 STA. 373+50.4 TO 374+00.0 - 50'

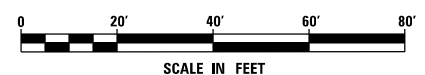
REMOVING MANHOLES  
 368+53.4, 41.3 LT  
 371+62.0, 41.2 LT  
 373+50.4, 40.6 LT

REMOVING INLETS  
 368+51.5, 33.2 RT  
 371+61.1, 33.1 LT  
 373+51.7, 33.2 RT



SEE DRAWING DU-14  
 MATCH LINE STA. 368+00.00

MATCH LINE STA. 374+00.00  
 SEE DRAWING DU-16



NOTE:  
 1. SEE DRAWING DN-01 FOR DRAINAGE LEGEND AND NOTES.  
 2. SEE DRAWINGS DS-01 THROUGH DS-07 FOR STRUCTURE AND PIPE INFORMATION

100 S. WACKER DR.  
 SUITE 600  
 CHICAGO, IL 60606  
 TEL (312) 935-1000  
 FAX (312) 935-4998



FILE NAME = D:\160M62-SHT-DRAINE\X15.dgn  
 SHT\_PLAN

USER NAME = Anthony.Plutz  
 PLOT SCALE = 40.000000' / in.  
 PLOT DATE = 3/13/2013

DESIGNED - EJD  
 DRAWN - EJD  
 CHECKED - JWM  
 DATE - 03/13/13

REVISED -  
 REVISED -  
 REVISED -  
 REVISED -

STATE OF ILLINOIS  
 DEPARTMENT OF TRANSPORTATION

EXISTING DRAINAGE PLAN - US 45 (LAGRANGE ROAD)

SCALE: 1"=20' SHEET 15 OF 17 SHEETS STA. 368+00.00 TO STA. 374+00.00

F.A.P. RTE.	SECTION	COUNTY	TOTAL SHEETS	SHEET NO.
330	103R-5	COOK	778	170
<b>DU-15</b>			<b>CONTRACT NO. 60M62</b>	
ILLINOIS FED. AID PROJECT				