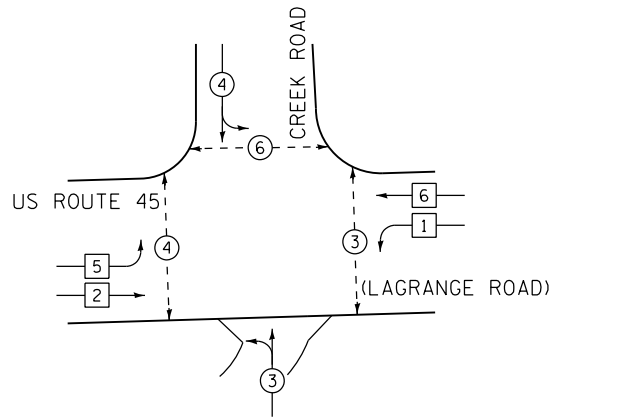
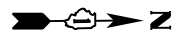


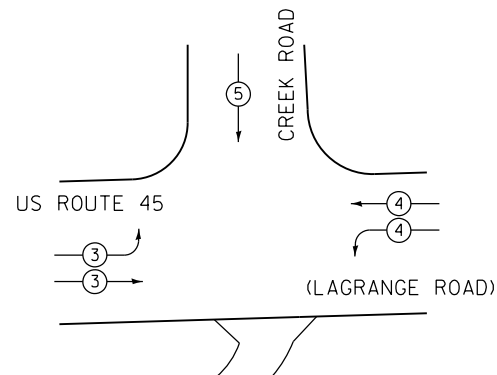
CONTROLLER SEQUENCE



PHASE DESIGNATION DIAGRAM



EMERGENCY VEHICLE PREEMPTION SEQUENCE



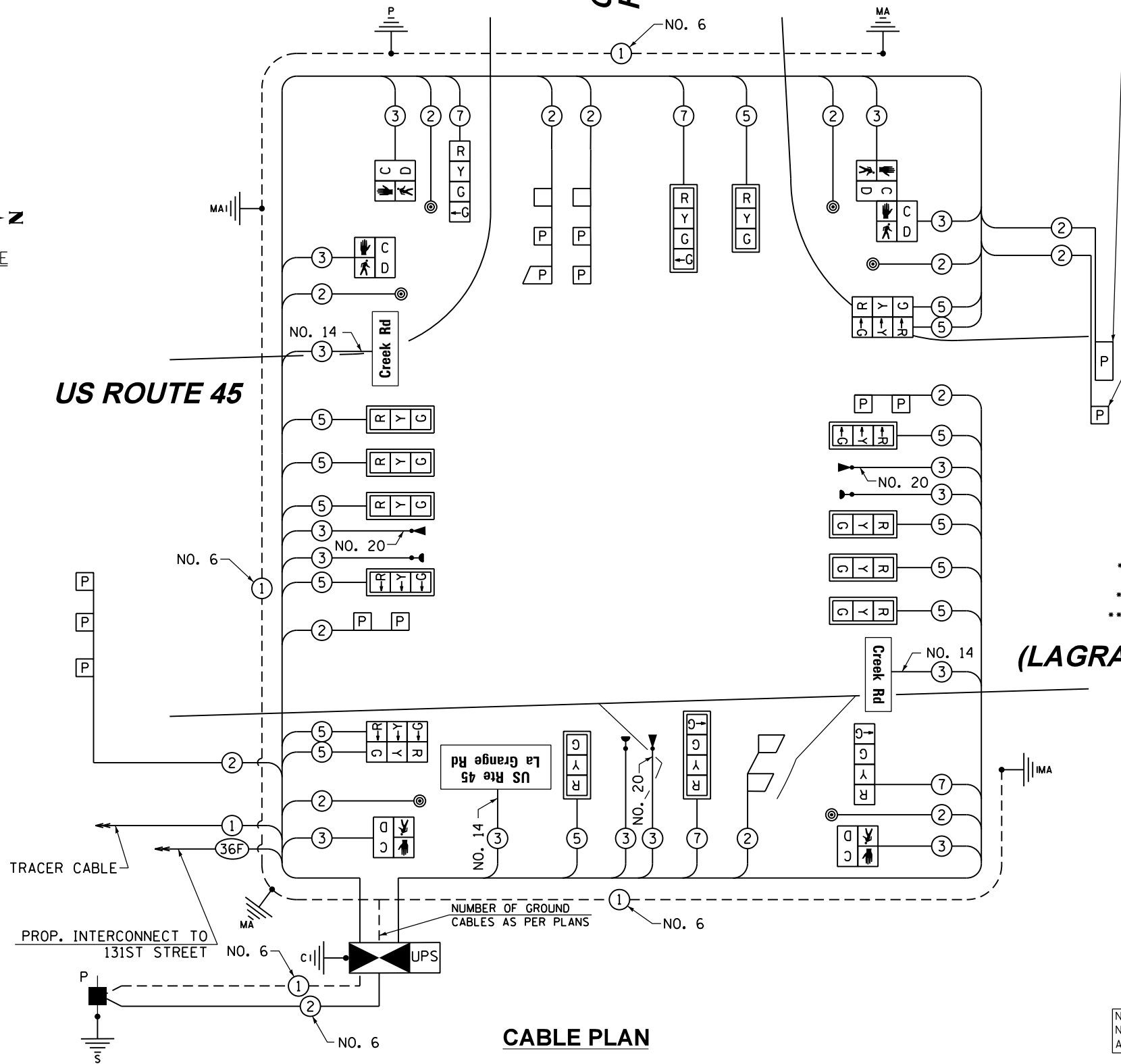
PROPOSED EMERGENCY VEHICLE PREEMPTORS			
EMERGENCY VEHICLE PREEMPTORS	3	4	5
MOVEMENT			

I.D.O.T. TRAFFIC SIGNAL INSTALLATION ELECTRICAL SERVICE REQUIREMENTS					TOTAL WATTAGE
TYPE	NO. OF LAMPS	WATTAGE (INCAND.)	LED	% OPERATION	
SIGNAL (RED)	18		17	0.50	153.0
(YELLOW)	18		25	0.25	112.5
(GREEN)	22		15	0.25	82.5
ARROW	--		12	0.10	0.0
PED. SIGNAL	6		25	1.00	150.0
CONTROLLER	1		100	1.00	100.0
ILLUM. SIGN	3		25	0.05	3.8
FLASHER			25	0.50	
ENERGY COST TO:					TOTAL= 601.8

VILLAGE OF PALOS PARK
 8999 WEST 123RD STREET
 PALOS PARK, ILLINOIS 60464
 ENERGY SUPPLY: CONTACT: KATHRYN SUGRUE
 PHONE: (708) 235-2337
 COMPANY: COMMONWEALTH EDISON

PHASE DESIGNATION DIAGRAM LEGEND

- DUAL ENTRY PHASE
- SINGLE ENTRY PHASE
- PEDESTRIAN PHASE
- RIGHT TURN OVERLAP:
- NUMBER REFERS TO ASSOCIATED PHASE



CABLE PLAN

SCHEDULE OF QUANTITIES

ITEM	UNIT	TOTAL
SIGN PANEL - TYPE 1	SO FT	30
SERVICE INSTALLATION - POLE MOUNTED	EACH	1
UNDERGROUND CONDUIT, GALVANIZED STEEL, 2" DIA.	FOOT	745
UNDERGROUND CONDUIT, GALVANIZED STEEL, 2 1/2" DIA.	FOOT	31
UNDERGROUND CONDUIT, GALVANIZED STEEL, 3" DIA.	FOOT	29
UNDERGROUND CONDUIT, GALVANIZED STEEL, 3 1/2" DIA.	FOOT	9
UNDERGROUND CONDUIT, GALVANIZED STEEL, 4" DIA.	FOOT	776
HANDHOLE	EACH	4
HEAVY-DUTY HANDHOLE	EACH	3
DOUBLE HANDHOLE	EACH	2
FULL-ACTUATED CONTROLLER AND TYPE IV CABINET, SPECIAL	EACH	1
UNINTERRUPTIBLE POWER SUPPLY, SPECIAL	EACH	1
TRANSCIVER - FIBER OPTIC	EACH	1
ELECTRIC CABLE IN CONDUIT, SIGNAL NO. 14 2C	FOOT	1164
ELECTRIC CABLE IN CONDUIT, SIGNAL NO. 14 3C	FOOT	1773
ELECTRIC CABLE IN CONDUIT, SIGNAL NO. 14 5C	FOOT	2858
ELECTRIC CABLE IN CONDUIT, SIGNAL NO. 14 7C	FOOT	821
ELECTRIC CABLE IN CONDUIT, LEAD-IN, NO. 14 1 PAIR	FOOT	1981
ELECTRIC CABLE IN CONDUIT, SERVICE, NO. 6 2 C	FOOT	98
ELECTRIC CABLE IN CONDUIT, EQUIPMENT GROUNDING CONDUCTOR NO. 6 1 C	FOOT	644
TRAFFIC SIGNAL POST, GALVANIZED STEEL 15 FT.	EACH	1
STEEL MAST ARM ASSEMBLY AND POLE, 40 FT.	EACH	1
STEEL MAST ARM ASSEMBLY AND POLE, 42 FT.	EACH	1
STEEL MAST ARM ASSEMBLY AND POLE, 50 FT.	EACH	1
STEEL MAST ARM ASSEMBLY AND POLE, 54 FT.	EACH	1
CONCRETE FOUNDATION, TYPE A	FOOT	4
CONCRETE FOUNDATION, TYPE C	FOOT	4
CONCRETE FOUNDATION, TYPE E 36-INCH DIAMETER	FOOT	56
SIGNAL HEAD, LED, 1-FACE, 3-SECTION, MAST-ARM MOUNTED	EACH	10
SIGNAL HEAD, LED, 2-FACE, 3-SECTION, BRACKET MOUNTED	EACH	2
SIGNAL HEAD, LED, 1-FACE, 4-SECTION, BRACKET MOUNTED	EACH	2
SIGNAL HEAD, LED, 1-FACE, 4-SECTION, MAST ARM MOUNTED	EACH	2
PEDESTRIAN SIGNAL HEAD, LED, 1-FACE, BRACKET MOUNTED WITH COUNTDOWN TIMER	EACH	4
PEDESTRIAN SIGNAL HEAD, LED, 2-FACE, BRACKET MOUNTED WITH COUNTDOWN TIMER	EACH	1
TRAFFIC SIGNAL BACKPLATE, LOUVERED, ALUMINUM	EACH	12
INDUCTIVE LOOP DETECTOR	EACH	8
DETECTOR LOOP, TYPE I	FOOT	141
PREFORMED DETECTOR LOOP	FOOT	444
* LIGHT DETECTOR	EACH	3
* LIGHT DETECTOR AMPLIFIER	EACH	1
PEDESTRIAN PUSH-BUTTON	EACH	6
* ELECTRIC CABLE IN CONDUIT NO. 20 3/C, TWISTED, SHIELDED	FOOT	567
** LED INTERNALLY ILLUMINATED STREET NAME SIGN	EACH	3

- * 100% COST TO PALOS FIRE PROTECTION DISTRICT
- ** 100% COST TO VILLAGE OF PALOS PARK

THE END OF THE TRACER CABLE SHALL BE CONTINUOUS AND EXTEND INTO THE CONTROLLER CABINET.

NOTE: THE TRAFFIC SIGNAL CONTROLLER EQUIPMENT FOR THIS PROJECT SHALL BE "EAGLE" TO MATCH THE EXISTING ADJACENT SYSTEM.

NOTE: NEW PERMANENT SERVICE INSTALLATIONS WITH ILLUMINATED SIGNS AND/OR COMBINATION MAST ARM SIGNAL POLES SHALL BE METERED.



FILE NAME = D160M62-SHT-TD42.dgn
 SHT.PLAN

USER NAME = Anthony.Plutz	DESIGNED - MRF	REVISED -
	DRAWN - MRF	REVISED -
PLOT SCALE = 48.0000' / in.	CHECKED - MJL	REVISED -
PLOT DATE = 3/13/2013	DATE - 03/13/13	REVISED -

STATE OF ILLINOIS
 DEPARTMENT OF TRANSPORTATION

SCHEDULE OF QUANTITIES, CABLE PLAN, PHASE DESIGNATION DIAGRAM AND EMERGENCY VEHICLE PREEMPTION SEQUENCE
 US 45 (LAGRANGE ROAD) AND CREEK ROAD

SCALE: N.T.S. SHEET 1 OF 1 SHEETS STA. TO STA.

F.A.P. RTE.	SECTION	COUNTY	TOTAL SHEETS	SHEET NO.
330	103R-5	COOK	778	313
TD-42			CONTRACT NO. 60M62	
ILLINOIS FED. AID PROJECT				