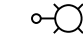
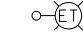




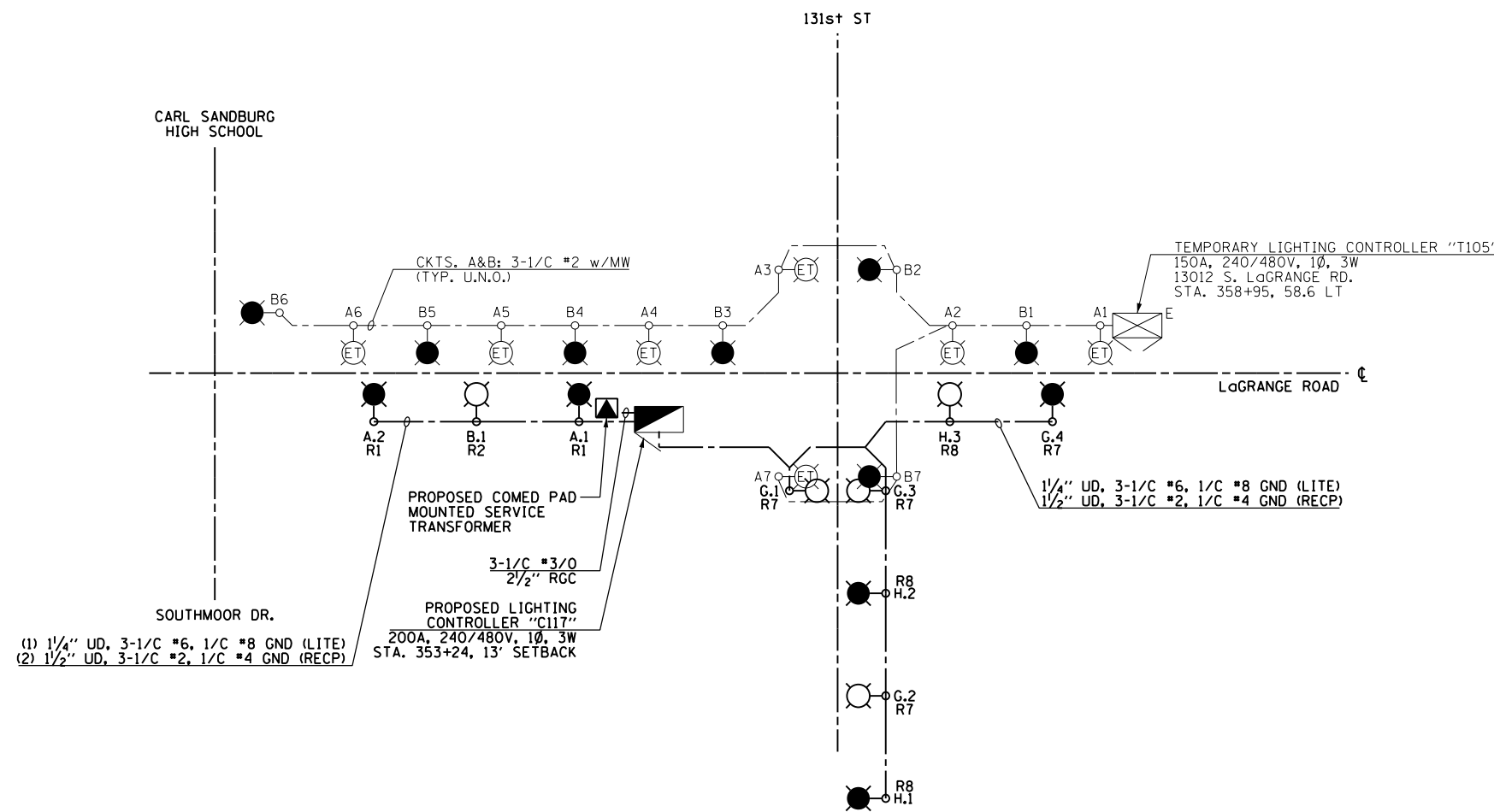


LEGEND:

-  PROPOSED LIGHTING UNIT: 400W, 240V PHASE TO NEUTRAL, HPS LUMINAIRE WITH TYPE III DISTRIBUTION, 45'-2" ALUMINUM POLE SHAFT ON 24" DIAMETER CONCRETE FOUNDATION, 47'-6" MOUNTING HEIGHT, 12'-0" MAST ARM, WITH 5A FUSES AND T-BASE (RED PHASE-OPEN SYMBOL, BLACK PHASE-SHADED SYMBOL)
-  EXISTING TEMPORARY LIGHTING UNIT TO REMAIN
-  PROPOSED ROADWAY LIGHTING CONTROLLER SINGLE DOOR, BASE MOUNTED, SPECIAL 200A, 240/480V, 1Ø, 3W
-  PROPOSED COMED PAD-MOUNTED TRANSFORMER FOR UTILITY SERVICE CONNECTION
-  PROPOSED CONDUIT AND CABLE AS INDICATED TO SECONDARY SIDE OF UTILITY SERVICE CONNECTION
-  PROPOSED UNIT DUCT: SIZE AND QUANTITY OF CONDUCTORS AS INDICATED

NOTES:

1. SEE DRAWING E-1 FOR ELECTRICAL ABBREVIATIONS. SEE DRAWING E-2 FOR ELECTRICAL GENERAL NOTES.
2. COLOR CODING OF CONDUCTORS FOR 240/480V, 1Ø, 3W LIGHTING SYSTEM IS AS FOLLOWS:
 "A" PHASE - RED
 "B" PHASE - BLACK
 NEUTRAL - WHITE
 GROUND - GREEN



**LIGHTING CONTROLLER "T105"
ROADWAY LIGHTING PANEL LOAD TABLE**

| CIRCUIT | RED PHASE | | BLACK PHASE | | |
|--------------|-----------|-------------|--------------|-----------|-------------|
| | AMPS | WATTS | AMPS | WATTS | |
| A | 14 | 3360 | B | 14 | 3360 |
| C | -- | -- | D | -- | -- |
| E | -- | -- | F | -- | -- |
| G | -- | -- | H | -- | -- |
| I | -- | -- | J | -- | -- |
| K | -- | -- | L | -- | -- |
| TOTAL | 14 | 3360 | TOTAL | 14 | 3360 |

LOAD TABULATION IS BASED ON THE FOLLOWING:
400W HPS LUMINAIRE: 2.0A AT 240V

**LIGHTING CONTROLLER "C117"
ROADWAY LIGHTING PANEL LOAD TABLE**

| CIRCUIT | RED PHASE | | CIRCUIT | BLACK PHASE | |
|--------------|-----------|-------------|--------------|-------------|-------------|
| | AMPS | WATTS | | AMPS | WATTS |
| A | 4 | 960 | B | 2 | 480 |
| C | -- | -- | D | -- | -- |
| E | -- | -- | F | -- | -- |
| G | 8 | 1920 | H | 6 | 1440 |
| I | -- | -- | J | -- | -- |
| K | -- | -- | L | -- | -- |
| M | -- | -- | N | -- | -- |
| O | -- | -- | P | -- | -- |
| Q | -- | -- | R | -- | -- |
| S | -- | -- | T | -- | -- |
| U | -- | -- | V | -- | -- |
| W | -- | -- | X | -- | -- |
| TOTAL | 12 | 2880 | TOTAL | 8 | 1920 |

LOAD TABULATION IS BASED ON THE FOLLOWING:
400W HPS LUMINAIRE: 2.0A AT 240V

100 S. WACKER DR.
 SUITE 500
 CHICAGO, IL 60606
 TEL (312) 935-1000
 FAX (312) 935-4198
URS

| | | | |
|----------------------------------|------------------------------|-----------------|-----------|
| FILE NAME = D:\60M62-SHT-E33.dgn | USER NAME = Anthony.Plutz | DESIGNED - MAE | REVISED - |
| SHT.PLAN | PLOT SCALE = 2.000000' / in. | DRAWN - WM | REVISED - |
| | PLOT DATE = 3/13/2013 | CHECKED - DAD | REVISED - |
| | | DATE - 03/13/13 | REVISED - |

**STATE OF ILLINOIS
DEPARTMENT OF TRANSPORTATION**

**US 45 (LaGRANGE ROAD)
LIGHTING CONTROLLER "C117" STAGE 1A WIRING DIAGRAM**

SCALE: NONE SHEET 1 OF 1 SHEETS STA. TO STA.

| | | | | |
|---------------------------|----------------|--------------------|------------------|---------------|
| F.A.P. RTE. 330 | SECTION 103R-5 | COUNTY COOK | TOTAL SHEETS 778 | SHEET NO. 357 |
| E-33 | | CONTRACT NO. 60M62 | | |
| ILLINOIS FED. AID PROJECT | | | | |