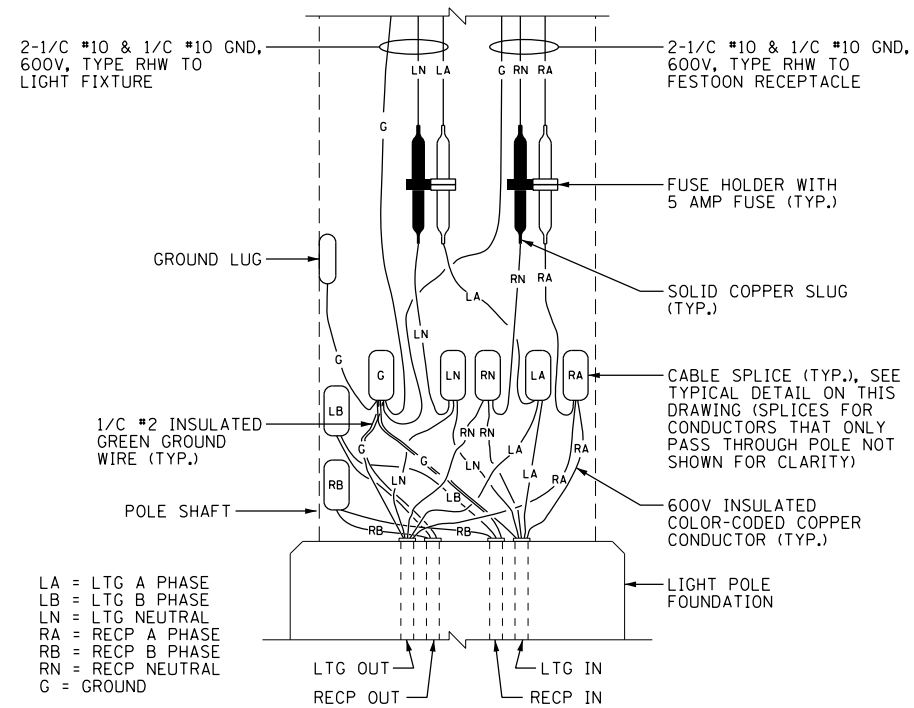


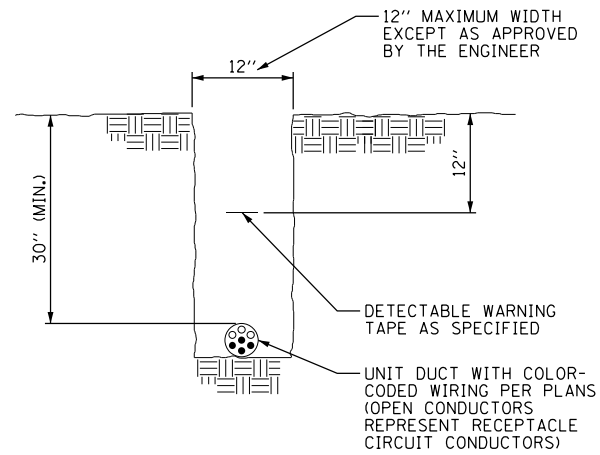
TYPICAL LIGHTING UNIT AND RECEPTACLE WIRING DIAGRAM  
N.T.S.

NOTES:

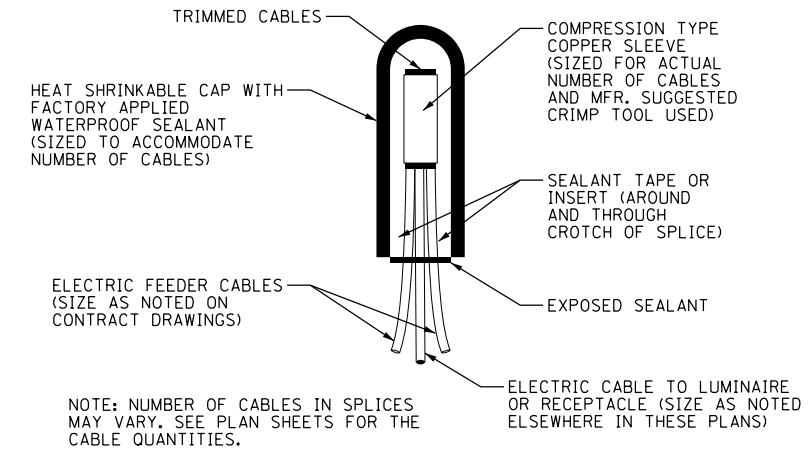
- SOME LIGHTING CIRCUITS ARE REQUIRED TO USE 3-1/C #2, 1/C #4 GND.



TYPICAL POLE BASE WIRING DETAIL  
N.T.S.



TYPICAL UNIT DUCT IN TRENCH DETAIL  
N.T.S.



TYPICAL SPLICE DETAIL  
N.T.S.