

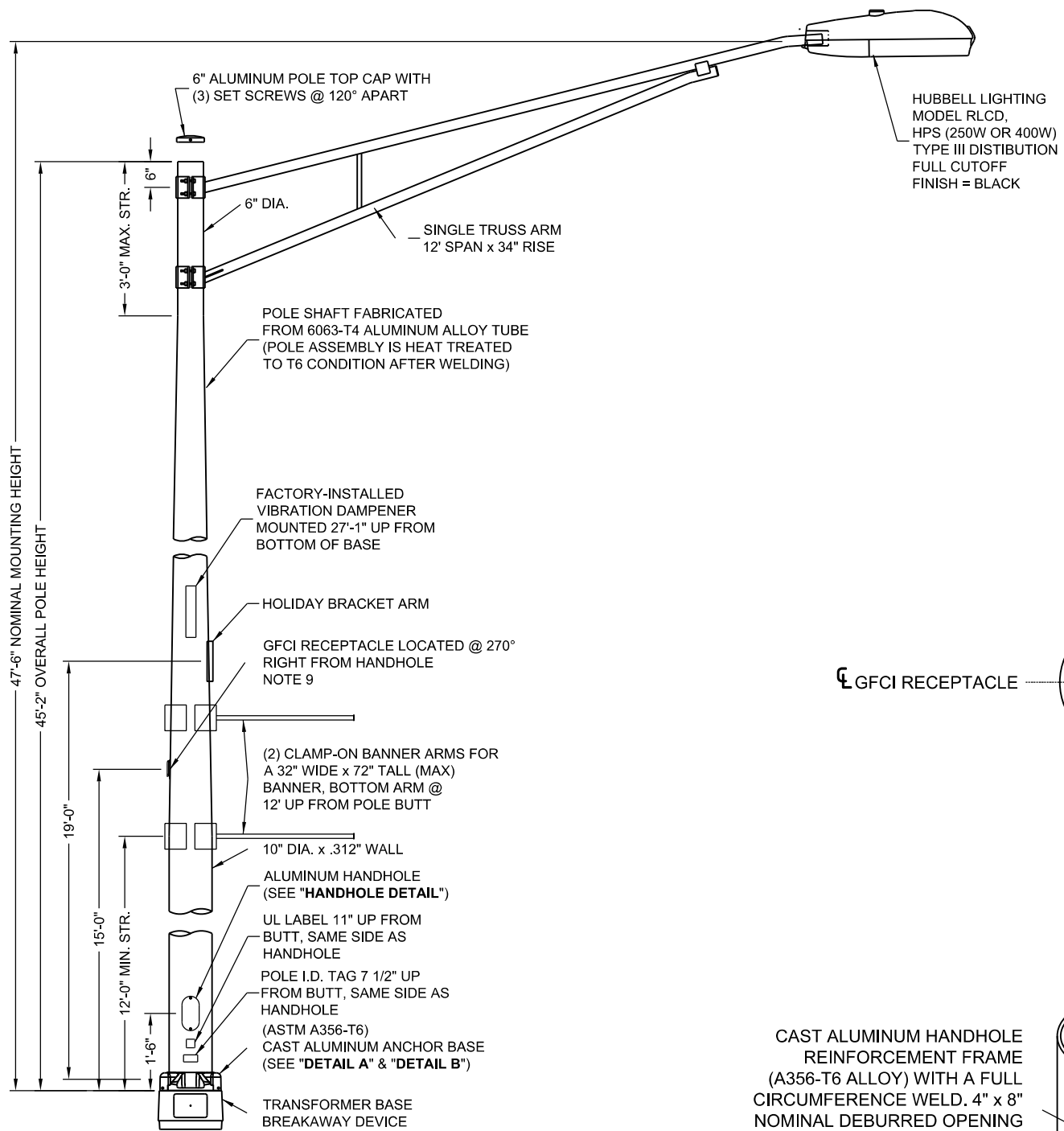
POLE PART NUMBERS

LIGHT POLE:
 VALMONT MODEL # 450260108T4C
 ALUMINUM ALLOY
 FINISH: POWDER BLACK DBL

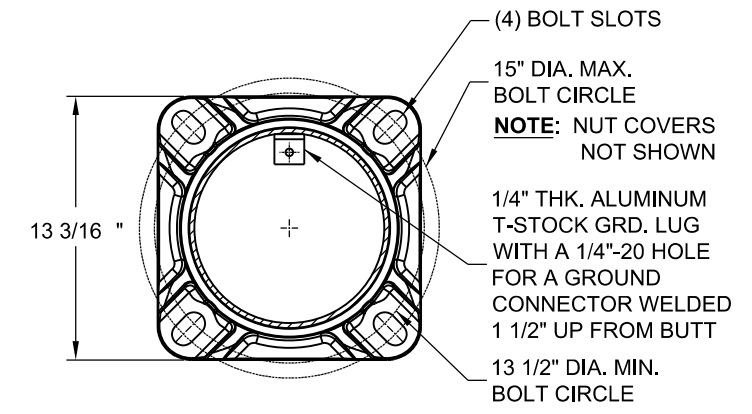
LUMINAIRE:
 HUBBELL LIGHTING
 400 WATT LUMINAIRE: RLCD-40S38-032-1-2-5-F3-BLACK
 250 WATT LUMINAIRE: RLCD-25S38-032-1-2-5-F3-BLACK

TRANSFORMER BASE:
 FINISH: POWDER BLACK DBL

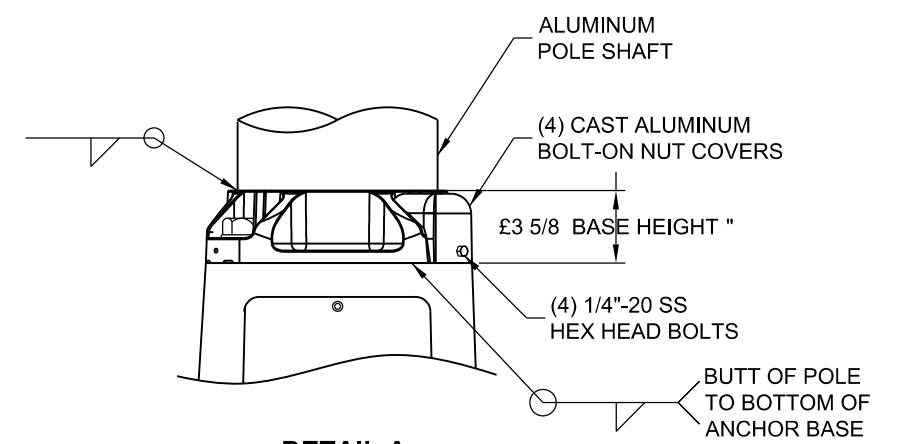
HOLIDAY BRACKET ARM SUPPLIER:
 PERMALITES
 1305 SCHOOLHOUSE RD
 NEW LENOX, IL
 815-485-5530
 815-953-7116



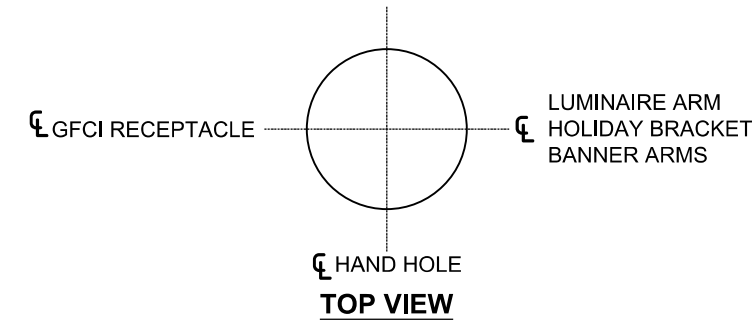
HUBBELL LIGHTING
 MODEL RLCD,
 HPS (250W OR 400W)
 TYPE III DISTRIBUTION
 FULL CUTOFF
 FINISH = BLACK



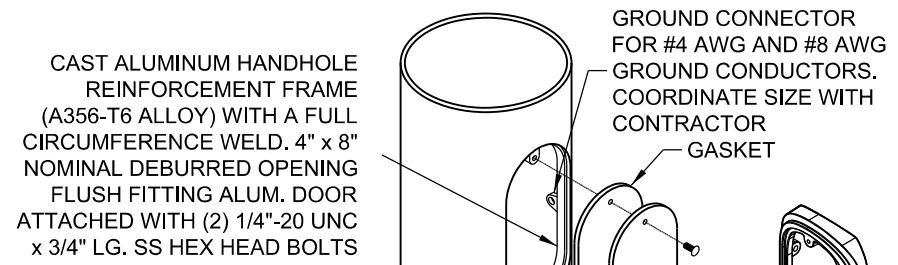
DETAIL B



DETAIL A



TOP VIEW



HANDHOLE DETAIL

CAST ALUMINUM FRAME 4" x 8"

- NOTES:**
1. ALL DIMENSIONS ARE IN INCHES UNLESS OTHERWISE SHOWN.
 2. MOUNTING HEIGHT IS DEFINED AS THE DISTANCE FROM THE CENTERLINE OF THE TENON TO THE BOTTOM OF THE ANCHOR BASE.
 3. TWO PIECE SHAFT WILL BE MATCHED, MARKED AND INTERCHANGEABLE BETWEEN DIFFERENT UNITS. FIELD DRILLING OF THE HOLES WILL NOT BE ALLOWED.
 4. THE LIGHT POLE WILL MEET AASHTO DESIGN CRITERIA AS SPECIFIED.
 5. THE INSTALLING CONTRACTOR WILL PROVIDE A UL LISTED GROUNDING CONNECTOR. CONTRACTOR SHALL COORDINATE LUGS WITH POLE MANUFACTURER FOR BONDING LUGS.
 6. LIGHT POLES WILL NOT BE INSTALLED WITHOUT MAST ARMS AND LUMINAIRES.
 7. LIGHT POLES WILL BE SET PLUMB ON THE FOUNDATION WITHOUT THE USE OF LEVELING NUTS, WASHERS OR SHIMS.
 8. LIGHTING UNIT IDENTIFICATION NUMBERS SHALL BE INSTALLED BEFORE THE LIGHTING UNIT IS ENERGIZED.
 9. ALL PROPOSED LIGHTING UNITS SHALL HAVE A 20A, 120V, GFCI RECEPTACLE WITH IN-USE WEATHERPROOF RUGGED UV-RESISTANT POLYCARBONATE COVER INSTALLED ON BACK OF POLE AT 15'-0" ABOVE THE BASE OF POLE. RECEPTACLE AND BOX SHALL BE BLACK.
 10. CONTRACTOR MUST PROVIDE A BREAKAWAY DEVICE, TRANSFORMER BASE WITH 15" DIA. BOLT CIRCLE, FOR ALL PROPOSED LIGHTING UNITS. TRANSFORMER BASE SHALL BE INCLUDED IN PAY ITEM "LIGHT POLE SPECIAL".
 11. LIGHT POLE SHALL BE LISTED OR CLASSIFIED BY A NATIONALLY RECOGNIZED TESTING LABORATORY SUCH AS UL, ETL, OR EQUIVALENT.
 12. CONTRACTOR MUST VERIFY ALL INFORMATION, PART NUMBERS, DIMENSIONS, MEASUREMENTS, AND COMPONENTS SHOWN ON THIS SHEET WITH THE VILLAGE OF ORLAND PARK PUBLIC WORKS DEPARTMENT AND THE EQUIPMENT MANUFACTURERS BEFORE ORDERING.

FILE NAME = D160M62-SHT-E47.dgn	USER NAME = Anthony.Plutz	DESIGNED - MAE	REVISED -
SHT_PLAN	PLOT SCALE = 2.000000' / in.	DRAWN - WM	REVISED -
	PLOT DATE = 3/13/2013	CHECKED - DAD	REVISED -
		DATE - 03/13/13	REVISED -

**STATE OF ILLINOIS
 DEPARTMENT OF TRANSPORTATION**

**US-45 (LaGRANGE ROAD)
 ALUMINUM LIGHT POLE, 47 1/2" (14.478 m) MOUNTING HEIGHT**

SCALE: NONE SHEET 1 OF 1 SHEETS STA. TO STA.

F.A.P. RTE.	SECTION	COUNTY	TOTAL SHEETS	SHEET NO.
330	103R-5	COOK	778	371
E-47			CONTRACT NO. 60M62	
ILLINOIS FED. AID PROJECT				