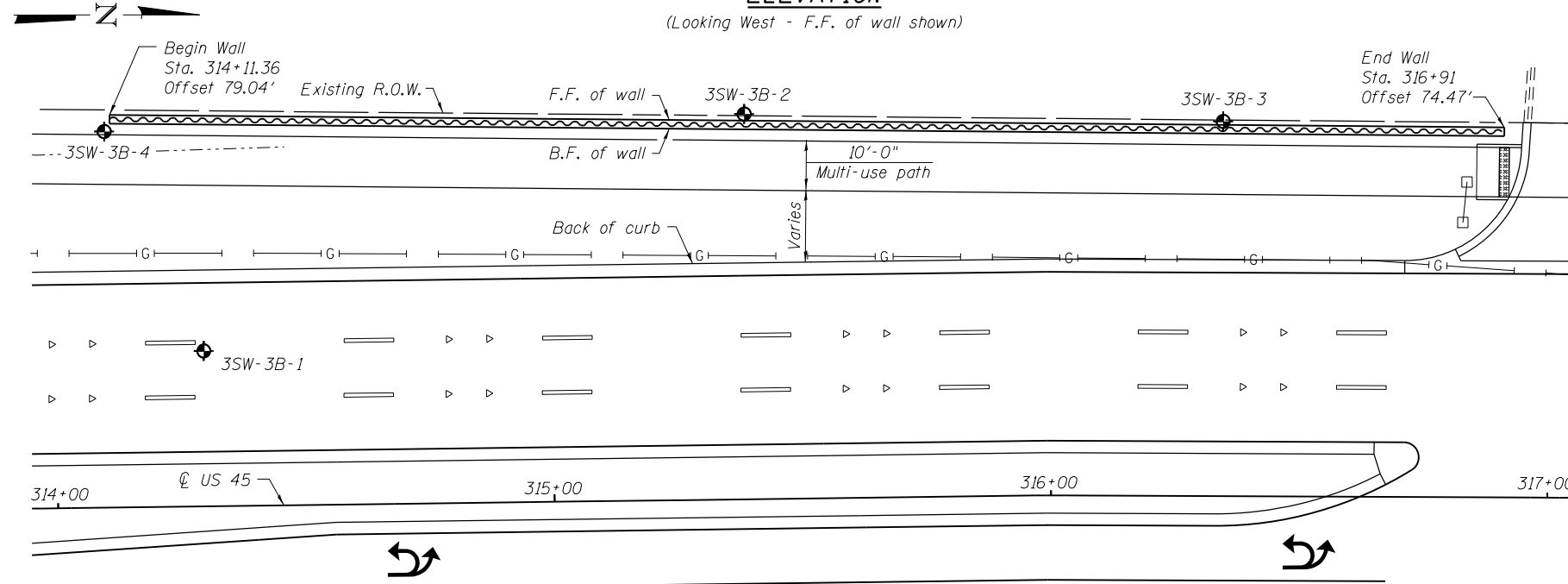


ELEVATION

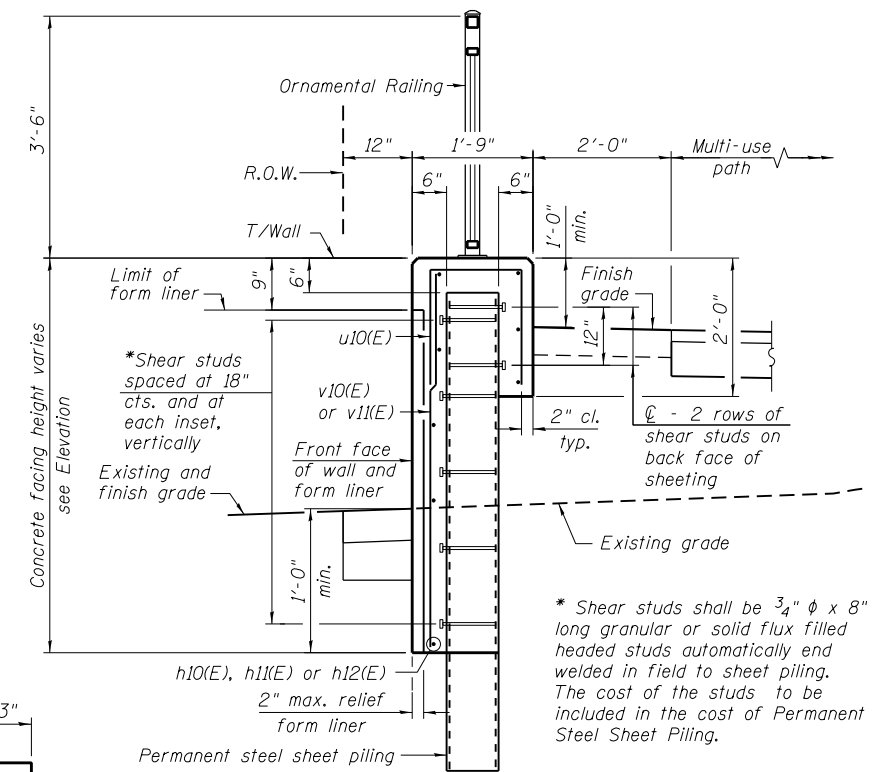
(Looking West - F.F. of wall shown)



PLAN

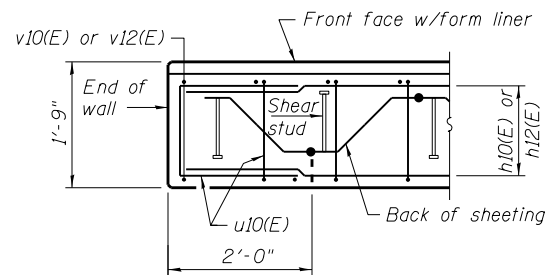
BAR LAPS

Basic Lap #5 bars - 2'-7" Top Bar Lap #5 bars - 2'-11"

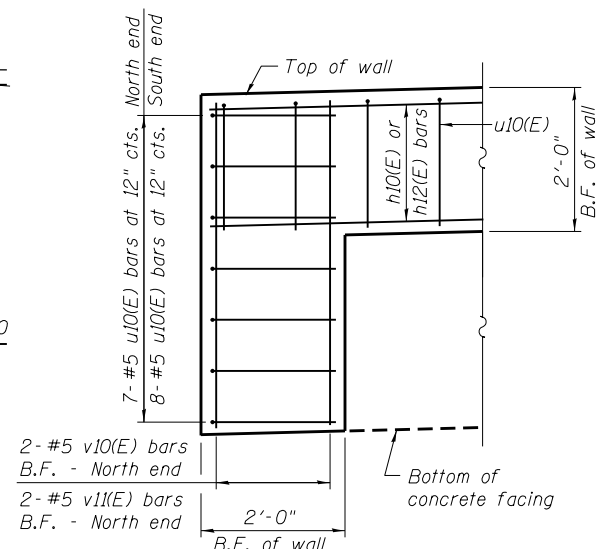


TYPICAL SECTION THROUGH WALL

BAR u10(E)



PLAN AT END OF WALL



TYPICAL END CAP DETAIL

(v(E) bars in F.F. not shown for clarity)

BILL OF MATERIAL

Bar	No.	Size	Length	Shape
h10(E)	75	#5	33'-8"	—
h11(E)	21	#5	29'-8"	—
h12(E)	11	#5	10'-10"	—
v10(E)	93	#5	5'-5"	—
v11(E)	194	#5	6'-10"	—
u10(E)	296	#5	4'-7"	□
Structure Excavation		Cu. Yd.	75	
Concrete Structures		Cu. Yd.	98.1	
Form Liner Textured Surface		Sq. Ft.	1,675	
Reinforcement Bars, Epoxy Coated		Pound	6,740	
Permanent Sheet Piling		Sq. Ft.	5,844	
Ornamental Railing		Foot	281	

Bars indicated thus 3x2-#5 etc. indicates 3 lines of bars with 2 lengths per line.

NOTES:

Wall stations, offsets and dimensions are measured at front face of wall.
 All exposed corners shall have a 1" chamfer.
 For General Notes, Wall Key Plan and US 45 Profile, see Sheet 1.
 For Typical Wall Details and Ornamental Railing see Sheet 2.
 The details for the concrete cap, reinforcement and required number of shear stud connectors are based on Section AZ 18 sheet piling. If the Contractor chooses to use any other section, then the Contractor shall submit revised concrete cap and reinforcement configuration for approval by the Engineer. Such changes shall not be cause for additional compensation.

100 S. WACKER DR.
 SUITE 600
 CHICAGO, IL 60606
 TEL (312) 939-1000
 FAX (312) 939-4998
URS

LEGEND:
 ① - Panel number
 ◆ - Soil Boring
 F.F. - Front Face
 B.F. - Back Face
 E.F. - Each Face

FILE NAME = D160M62-SHT-Wall1.01.dgn
 USER NAME = Anthony-Plutz
 PLOT SCALE = 3/32" = 1' / in.
 PLOT DATE = 3/13/2013

DESIGNED - RJ	REVISIONS -
CHECKED -	REVISIONS -
DRAWN - RJ/AMV	REVISIONS -
CHECKED -	REVISIONS -

**STATE OF ILLINOIS
 DEPARTMENT OF TRANSPORTATION**

**RETAINING WALL NO. 1 - S.N. 016-Z053
 STATION 314 + 11.36 TO 316 + 91.00**

SHEET NO. 3 OF 18 SHEETS

F.A.P. RTE.	SECTION	COUNTY	TOTAL SHEETS	SHEET NO.
330	103R-5	COOK	778	378
CONTRACT NO. 60M62				
ILLINOIS FED. AID PROJECT				