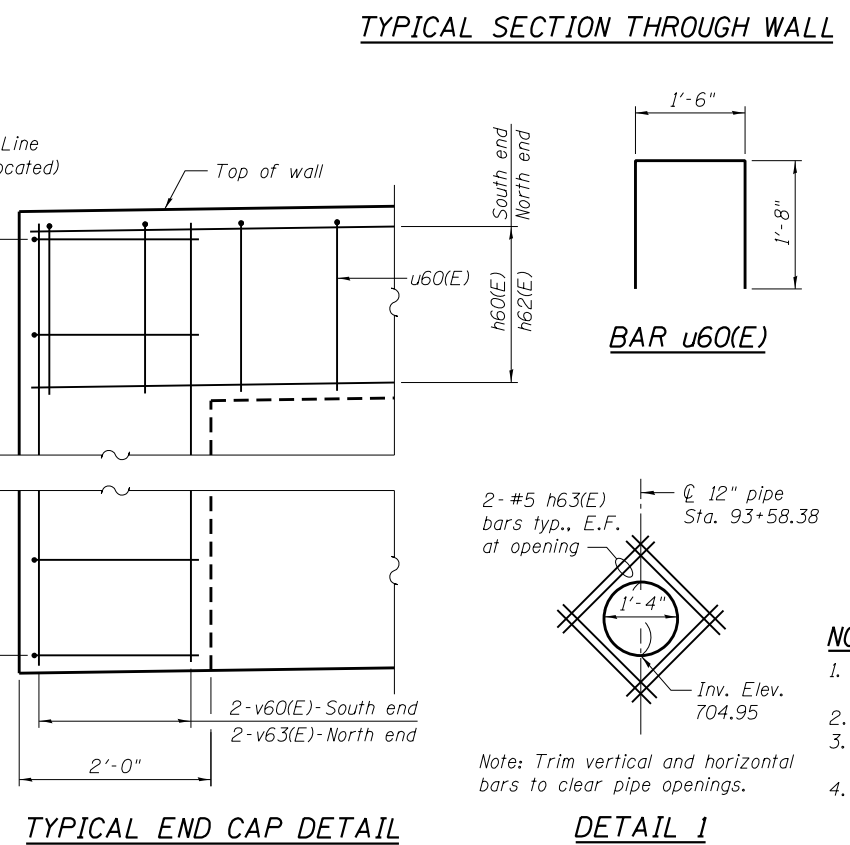
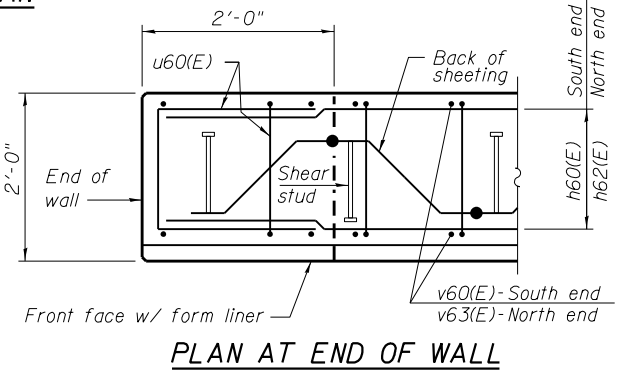


- LEGEND**
- ① - Panel No.
 - ◆ - Soil Boring
 - F.F. - Front Face
 - B.F. - Back Face
 - E.F. - Each Face



BILL OF MATERIAL

Bar	No.	Size	Length	Shape
h60(E)	38	#5	32'-11"	—
h61(E)	20	#5	29'-8"	—
h62(E)	7	#5	24'-5"	—
h63(E)	16	#5	2'-6"	—
v60(E)	93	#5	7'-0"	—
v61(E)	30	#5	5'-1"	—
v62(E)	61	#5	4'-3"	—
v63(E)	28	#5	2'-9"	—
u60(E)	220	#5	4'-10"	□
Structure Excavation		Cu. Yd.		74
Concrete Structures		Cu. Yd.		73.7
Form Liner Textured Surface		Sq. Ft.		1,037
Reinforcement Bars, Epoxy Coated		Pound		4,450
Permanent Sheet Piling		Sq. Ft.		3,554
Ornamental Railing		Foot		205

Bars indicated thus 5x2-#5 etc. indicates 5 lines of bars with 2 lengths per line.

BAR LAPS

- #5 bars - 2'-7" (Basic Lap)
- #5 bars - 2'-11" (Top Bar Lap)

NOTES:

1. Wall stations, offsets and dimensions are measured at front face of wall.
2. All exposed corners shall have a 1" chamfer.
3. For General Notes, Wall Key Plan and US 45 Profile and Bike Path Profile, see Sheet 1.
4. For Typical Wall Details and Ornamental Railing see Sheet 2.

100 S. WACKER DR.
 CHICAGO, IL 60606
 TEL (312) 939-1000
 FAX (312) 939-4998
URS