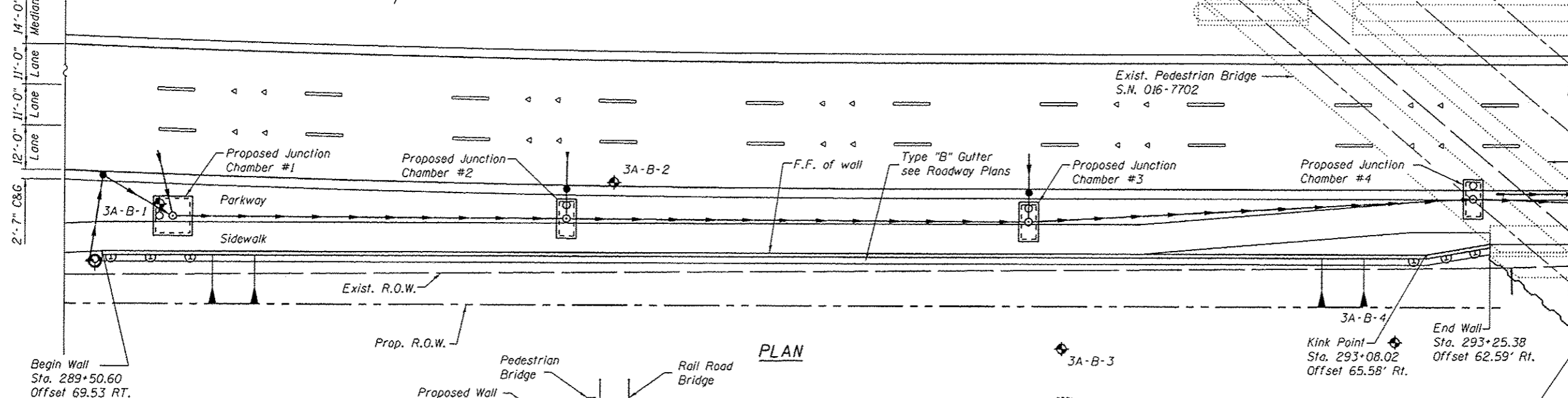
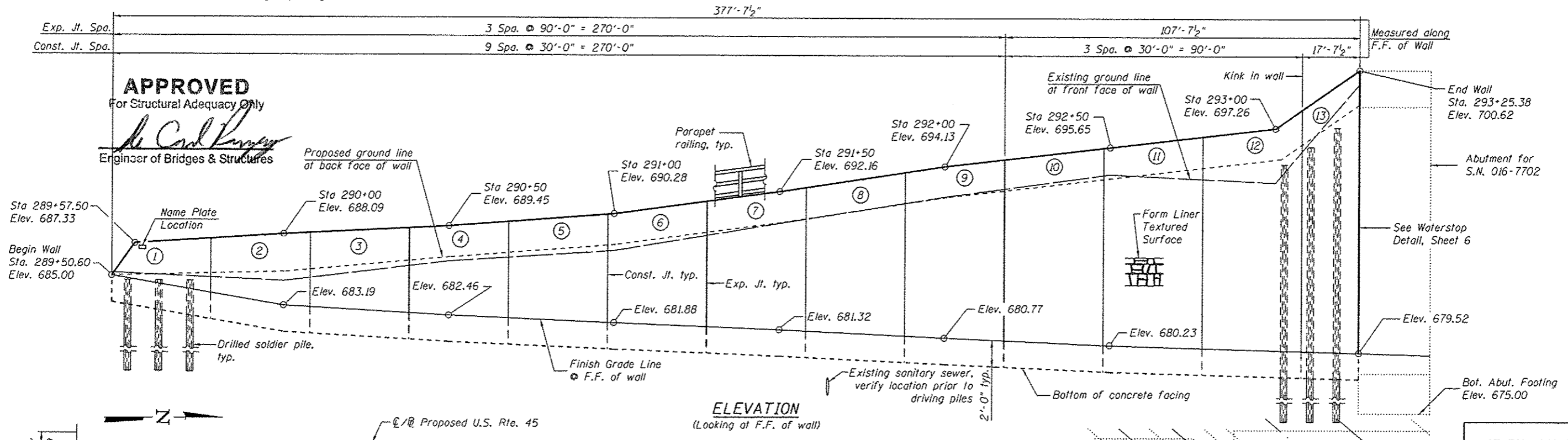


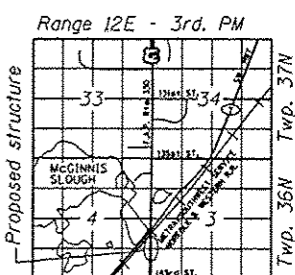
Bench Mark: Elev. 689.00 Top of brass survey monument located at the west edge of the LaGrange Road southbound pavement, 600 feet north of the SouthWest Highway bridge.

Existing Structure: None



STATION 289+50.60
BUILT BY
STATE OF ILLINOIS
LOADING HS-20
STRUCTURE NO. 016-2002

NAME PLATE
See Std. 515001



LEGEND

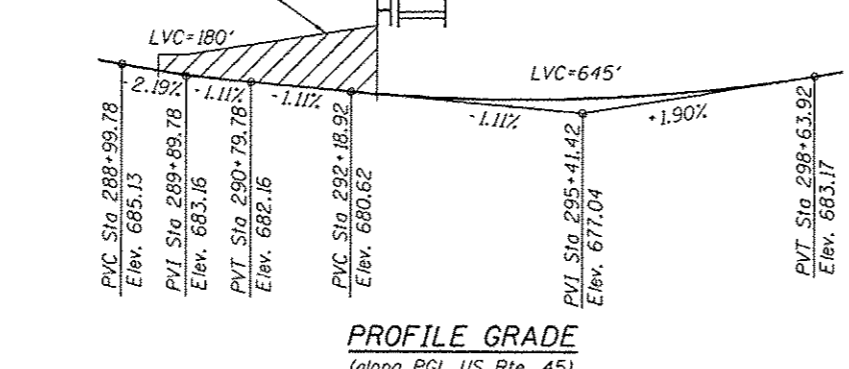
- Exist. Sanitary Sewer
- ◆ Prop. Drainage Structure
- ▶ Prop. Storm Sewer
- ⊙ Soil Boring
- F.F.=Front Face
- B.F.=Back Face
- E.F.=Each Face
- I.F.=Inside Face
- O.F.=Outside Face

Note:
Offsets are measured from the \mathcal{E}/\mathcal{W} U.S. Rte. 45 to front face of wall

CURVE DATA

Prop. Curve US45PCL-2
PI STA. = 290+43.86
 $\Delta = 2^\circ 22' 27"$ (LT)
D = 1° 03' 15"
R = 5435.00'
T = 112.62'
L = 225.21'
E = 1.17%

P.V.C. STA. = 289+31.24
P.T. STA. = 291+56.45



[Signature]
ARSALAN M. KHAN, S.E.
LICENSE NO.: 081-006258
EXPIRES: NOVEMBER 30, 2014
DATE: 03-13-2013

DESIGN SPECIFICATIONS
2002 AASHTO Standard Specifications
for Highway Bridges

DESIGN STRESSES
FIELD UNITS
f'c = 3,500 psi
fy = 60,000 psi (Reinforcement)
fy = 36,000 psi (M270 Grade 36)

GENERAL PLAN & ELEVATION
U.S. ROUTE 45 - LAGRANGE ROAD
F.A.P. RTE. 330 SEC. 103R-5
COOK COUNTY
STATION 289+50.60 TO 293+25.38
STRUCTURE NO. 016-2002

FILE NAME : 0162002-0062-001-CPE.dgn	USER NAME : Kyle.Pearl	DESIGNED - KJH	REVISD -	STATE OF ILLINOIS DEPARTMENT OF TRANSPORTATION	F.A.P. RTE. 330	SECTION 103R-5	COUNTY COOK	TOTAL SHEETS 178	SHEET NO. 394
	PLOT SCALE = 32.0/0.0000 1" = 32.0'	CHECKED - PMH	REVISD -		SHEET NO. 1 OF 9 SHEETS	CONTRACT NO. 60M62		ILLINOIS FEB. A10 PROJECT	
	PLOT DATE = 3/15/2013	DRAWN - RJ	REVISD -						
		CHECKED - MJL	REVISD -						

3-15-2013

