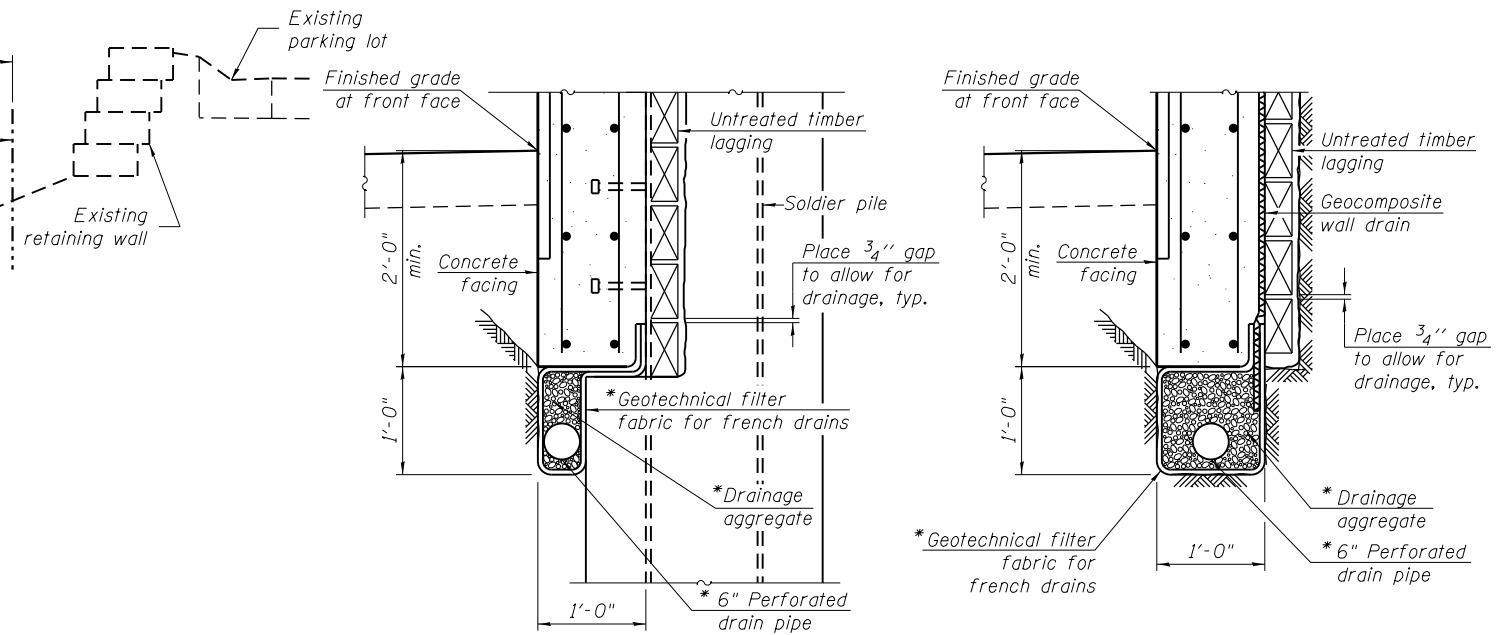


**TYPICAL SECTION THRU SOLDIER PILE WALL**  
(Looking North)



**AT SOLDIER PILES**      **BETWEEN SOLDIER PILES**

**PIPE UNDERDRAIN DETAIL**

\*Included in the cost of "Pipe Underdrains for Structures 6".

**GENERAL NOTES**

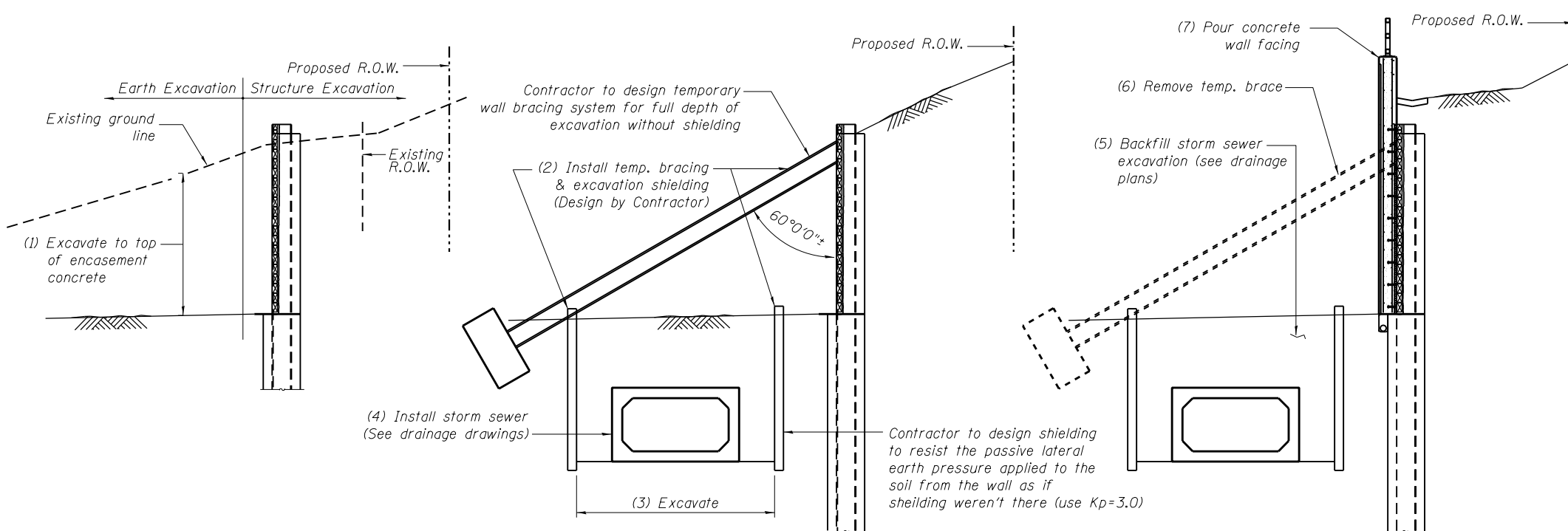
- Reinforcement bars designated (E) shall be epoxy coated.
- The Contractor is responsible for the design and performance of the lagging using no less than a 3 in. nominal rough-sawn timber with a minimum allowable bending stress of 1000 psi.
- The form liner shall be a random Ashlar blend pattern consisting of the following block sizes:
  - 28% - 4" X 18"
  - 16% - 8" X 8"
  - 28% - 8" X 11"
  - 28% - 8" X 18"

**INDEX OF SHEETS**

- General Plan & Elevation
- General Details & Bill of Material
- Plan and Elevation
- Plan and Elevation
- Pile Schedule & Details
- Bill of Material
- Parapet Railing
- Soil Borings
- Soil Borings

**TOTAL BILL OF MATERIAL**

ITEM	UNIT	TOTAL
Structure Excavation	Cu. Yd.	683
Removal and Disposal of Unsuitable Material for Structures	Cu. Yd.	40
Concrete Structures	Cu. Yd.	175.7
Form Liner Textured Surface	Sq. Ft.	3,989
Stud Shear Connectors	Each	973
Reinforcement Bars, Epoxy Coated	Pound	20,100
Parapet Railing	Foot	378
Name Plates	Each	1
Geocomposite Wall Drain	Sq. Yd.	375
Drilling and Setting Soldier Piles (In Soil)	Cu. Ft.	12,474
Removal of Temporary Soil Retention System	Sq. Ft.	962
Untreated Timber Lagging	Sq. Ft.	3,303
Furnishing Soldier Piles (W Section)	Foot	1,514
Pipe Underdrains for Structures 6"	Foot	435
Temporary Wall Bracing System	L. Sum	1



**STEP 1 - CONSTRUCT SOLDIER PILE WALL W/O FACING**

**STEP 2 - INSTALL TEMPORARY WALL BRACING SYSTEM AND STORM SEWER**

**STEP 3 - FINISH WALL CONSTRUCTION**

**SOLDIER PILE WALL STAGE CONSTRUCTION**

100 S. WACKER DR.  
 15TH FLOOR  
 CHICAGO, IL 60606  
 TEL (312) 939-1000  
 FAX (312) 939-4998  
**URS**

FILE NAME = 0162002-60M62-002-GND.dgn	USER NAME = Anthony.Plutz	DESIGNED - KJH	REVISED -
		CHECKED - PMH	REVISED -
	PLOT SCALE = 4:8.0002 '1' / in.	DRAWN - PMH/RJ	REVISED -
	PLOT DATE = 3/13/2013	CHECKED - MJL	REVISED -

**STATE OF ILLINOIS  
DEPARTMENT OF TRANSPORTATION**

**GENERAL DETAILS & BILL OF MATERIAL  
STRUCTURE NO. 016-2002**

SHEET NO. 2 OF 9 SHEETS

F.A.P. RTE.	SECTION	COUNTY	TOTAL SHEETS	SHEET NO.
330	103R-5	COOK	778	395
				CONTRACT NO. 60M62
ILLINOIS FED. AID PROJECT				