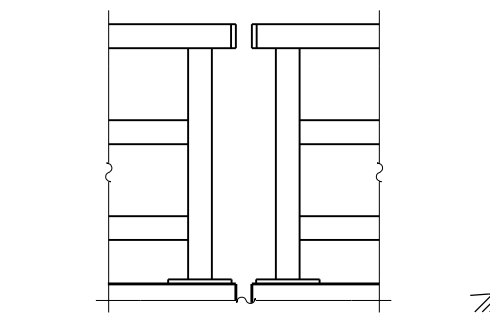
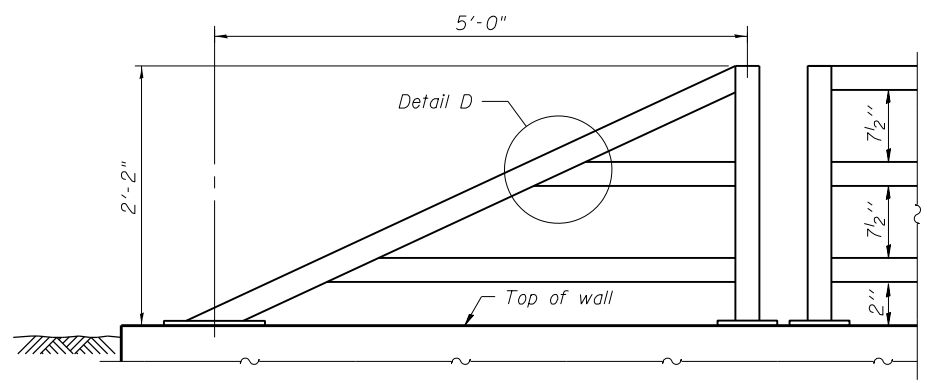


**PARAPET RAILING**  
**ELEVATION**  
(Inside Face of Rail)

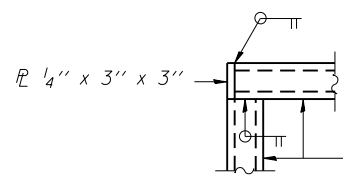


**PARAPET RAILING**  
**ELEVATION AT EXPANSION JOINT**

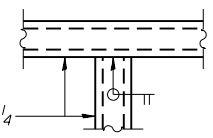


**PARAPET RAILING**  
**AT END SECTION**

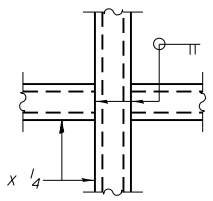
Note:  
All steel rail elements shall be galvanized according to Article 509.05 of the Standard Specifications.



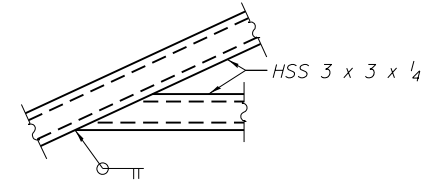
**DETAIL A**



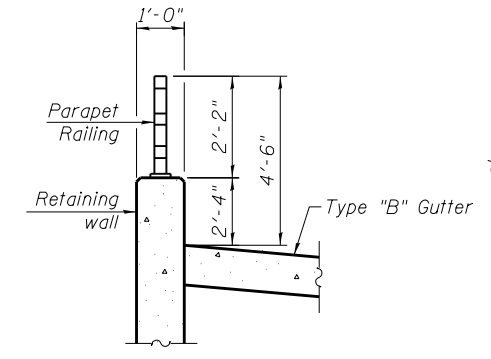
**DETAIL B**



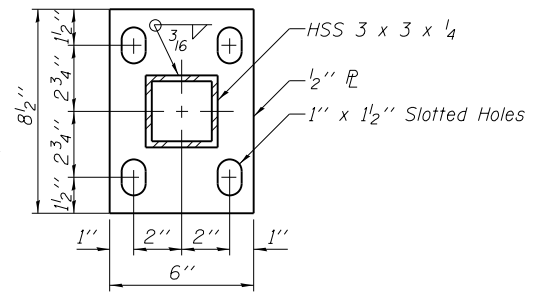
**DETAIL C**



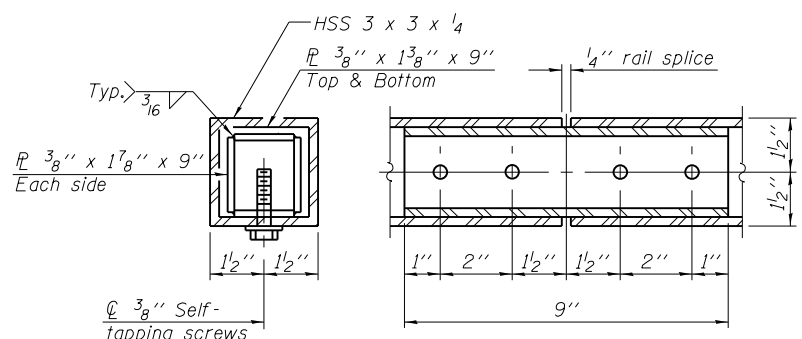
**DETAIL D**



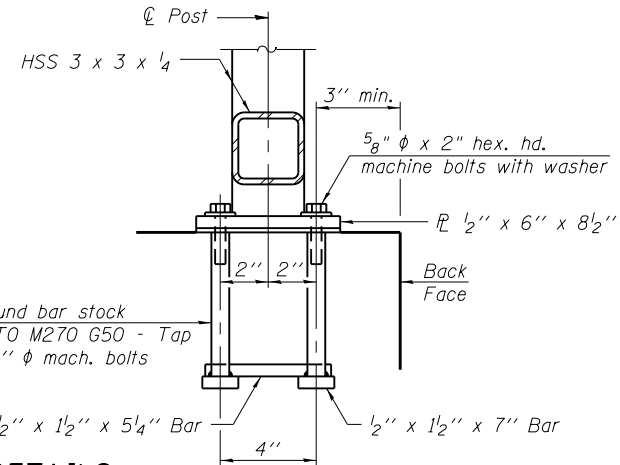
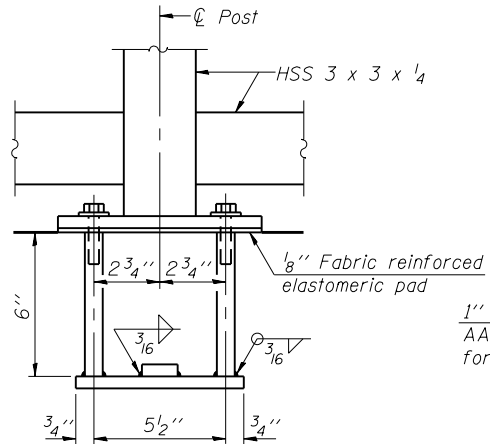
**SECTION THRU RAILING**



**BASE PLATE**



**RAIL SPLICE**



**ANCHOR BOLT DETAILS**

In lieu of the cast-in-place anchor device shown, the Contractor has the option of drilling and setting 5/8"  $\phi$  anchor rods according to Article 509.06 of the Standard Specifications. Embedment shall be according to the manufacturer's specifications.

URS  
100 S. WACKER DR.  
SUITE 600  
CHICAGO, IL 60606  
TEL (312) 935-1000  
FAX (312) 935-4998

**BILL OF MATERIAL**

Item	Unit	Quantity
Parapet Railing	Foot	378

FILE NAME = 0162002-60M62-007-Rail.dgn	USER NAME = Anthony.Plutz	DESIGNED - PMH	REVISED -	<b>STATE OF ILLINOIS</b> <b>DEPARTMENT OF TRANSPORTATION</b>	<b>PARAPET RAILING</b> <b>STRUCTURE NO. 016-2002</b>	F.A.P. RTE. 330	SECTION 103R-5	COUNTY COOK	TOTAL SHEETS 778	SHEET NO. 400	
	PLOT SCALE = 0:2.0000 '1' = 1/4" in.	DRAWN - RJ	REVISED -			SHEET NO. 7 OF 9 SHEETS		CONTRACT NO. 60M62		ILLINOIS FED. AID PROJECT	
	PLOT DATE = 3/13/2013	CHECKED - MJL	REVISED -								