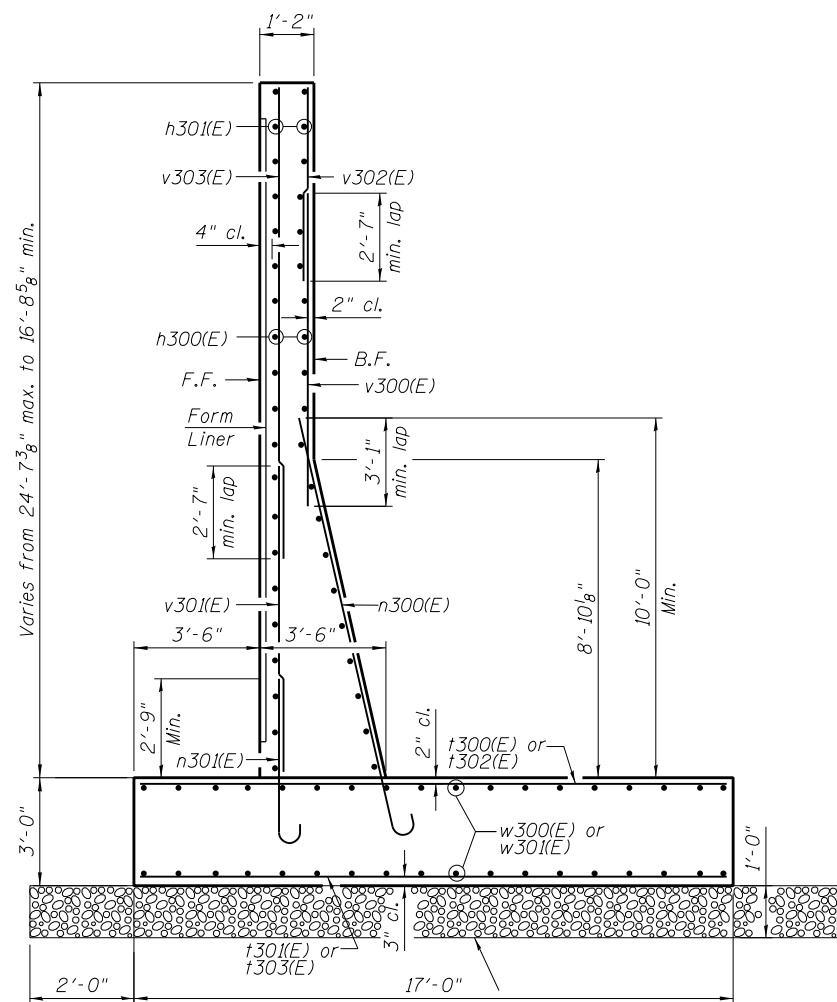


WALL BILL OF MATERIAL

Bar	No.	Size	Length	Shape
d300(E)	5	#6	11'-3"	U
d301(E)	3	#6	6'-3"	U
h300(E)	38	#5	28'-6"	—
h301(E)	8	#5	25'-9"	—
h302(E)	20	#5	32'-0"	—
h303(E)	8	#5	32'-3"	—
h304(E)	22	#5	22'-4"	—
h305(E)	22	#5	25'-8"	—
h306(E)	28	#5	13'-8"	—
h307(E)	16	#5	2'-6"	—
n300(E)	51	#9	14'-0"	U
n301(E)	103	#5	6'-1"	U
n302(E)	59	#6	12'-8"	U
n303(E)	92	#6	8'-4"	U
n304(E)	5	#5	3'-9"	—
n305(E)	8	#9	8'-6"	—
n306(E)	29	#8	7'-4"	—
s300(E)	38	#4	6'-0"	U
t300(E)	4	#8	6'-8"	—
t301(E)	8	#5	6'-8"	—
t302(E)	27	#9	16'-8"	—
t303(E)	52	#5	16'-8"	—
t304(E)	30	#8	13'-8"	—
t305(E)	59	#5	13'-8"	—
t306(E)	92	#6	11'-8"	—
t307(E)	92	#5	11'-8"	—
v300(E)	59	#6	10'-6"	—
v301(E)	30	#5	10'-11"	—
v302(E)	59	#5	13'-1"	—
v303(E)	30	#5	24'-10"	—
v304(E)	30	#5	12'-3"	—
v305(E)	92	#5	9'-6"	—
w300(E)	36	#5	28'-6"	—
w301(E)	2	#5	5'-0"	—
w302(E)	30	#5	31'-9"	—
w303(E)	52	#5	25'-8"	—
w304(E)	6	#4	26'-3"	—
Concrete Structures		Cu. Yd.	225.7	
Reinforcement Bars, Epoxy Coated		Pound	25,220	

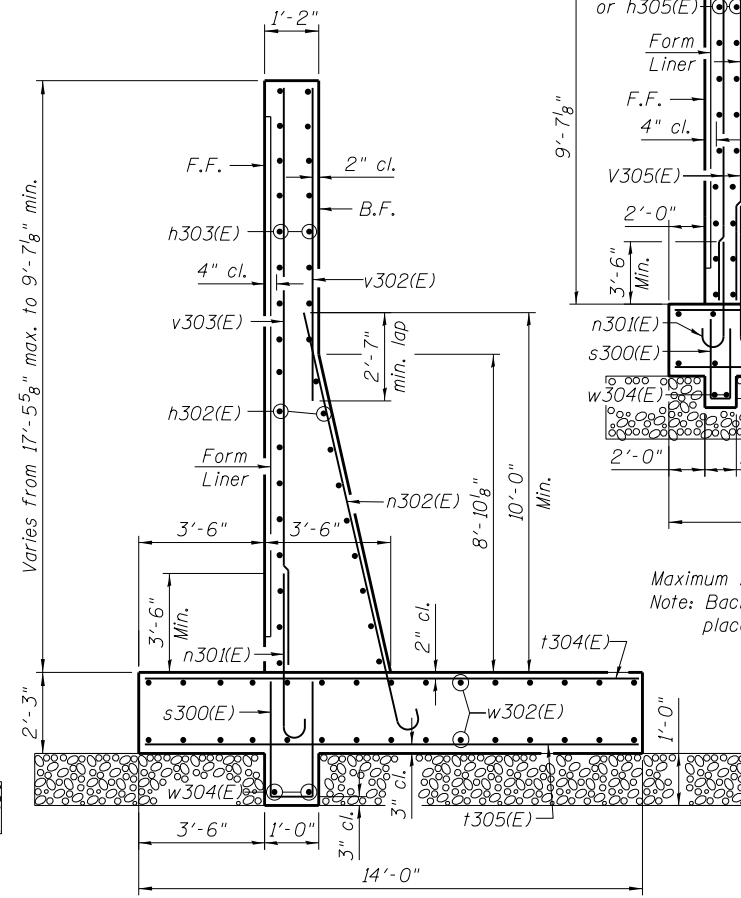
Bars indicated thus 14 x 2 - #5 etc. indicates 14 lines of bars with 2 lengths per line.



SECTION A-A

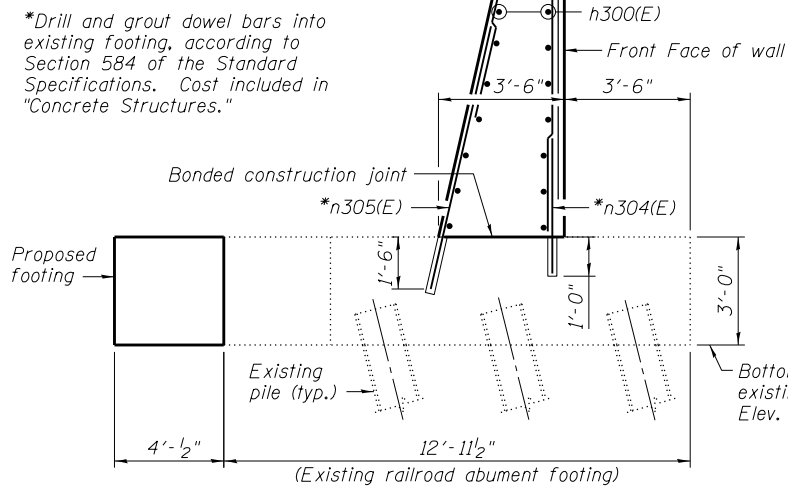
Maximum Applied Bearing Pressure = 4.28 ksf

Limits of "Removal and Disposal of Unsuitable Material for Structures." Backfill with "Granular Embankment, Special" (compacted CA-6), typ.



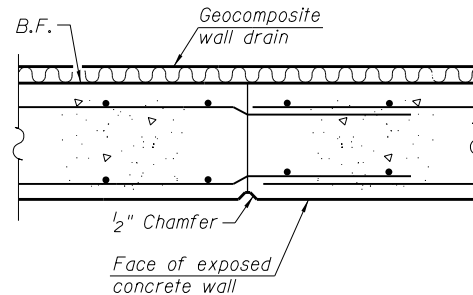
SECTION B-B

Maximum Applied Bearing Pressure = 2.88 ksf
Note: Backfill shall be compacted prior to placement of shear key.

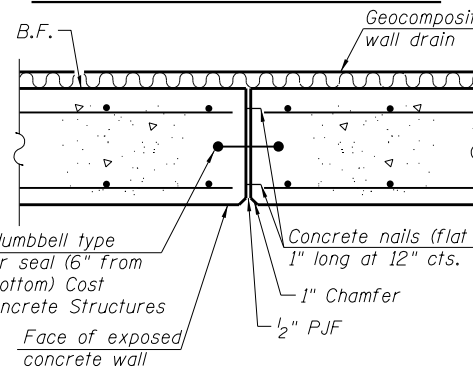


SECTION E-E

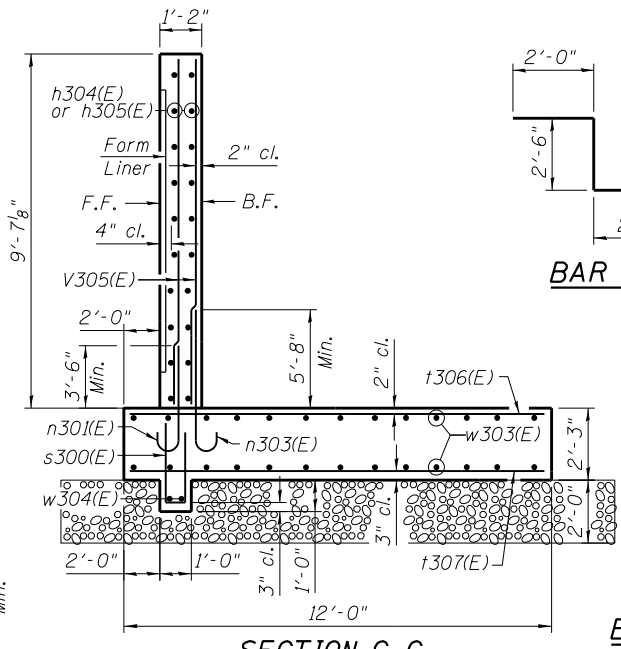
*Drill and grout dowel bars into existing footing, according to Section 584 of the Standard Specifications. Cost included in "Concrete Structures."



CONSTRUCTION JOINT DETAIL

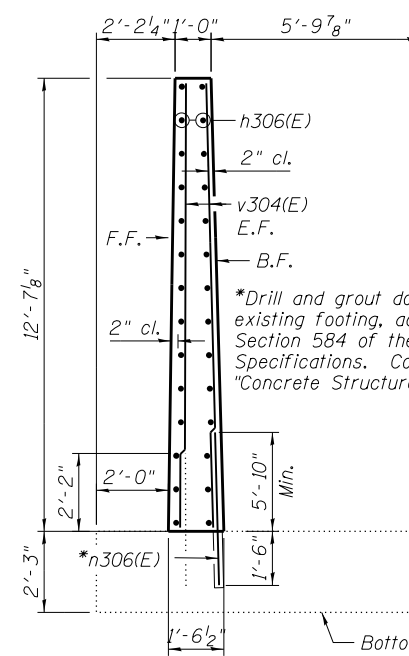


EXPANSION JOINT DETAIL

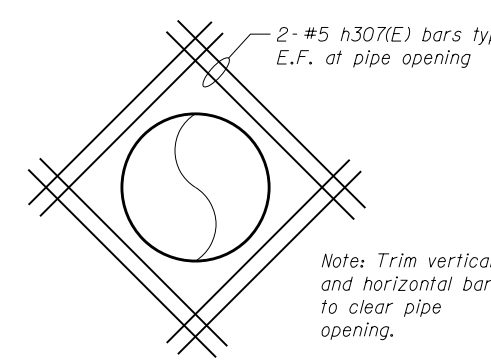


SECTION C-C

Maximum Applied Bearing Pressure = 2.26 ksf
Note: Backfill shall be compacted prior to placement of shear key.



SECTION D-D



PIPE PENETRATION DETAIL

BAR d300(E)

BAR d301(E)

BAR h301(E)

BAR h303(E)

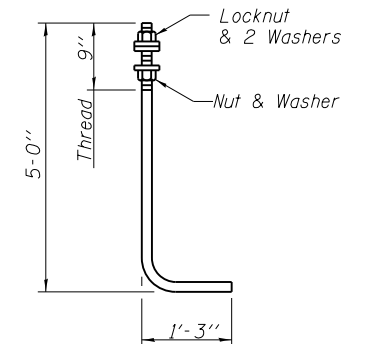
BAR v302(E)

BAR v303(E)

CUTTING DIAGRAMS

Bar	a	b	c
n300(E)	12'-9"	1'-3"	11 ³ / ₄ "
n301(E)	5'-6"	7"	5"
n302(E)	12'-0"	8"	6"
n303(E)	7'-8"	8"	6"

BARS n300(E), n301(E), n302(E) and n303(E)



ANCHOR ROD

Diameter as specified for light poles. (ASTM F 1554 Grade 105)

FILE NAME = 0162003-60M62-004-det.dgn	USER NAME = Anthony.Plutz	DESIGNED - AMV	REVISED -
		CHECKED - MGB	REVISED -
		DRAWN - AMV/MJL	REVISED -
		CHECKED - MGB	REVISED -
			REVISED -

F.A.P. RTE.	SECTION	COUNTY	TOTAL SHEETS	SHEET NO.
330	103R-5	COOK	778	406
CONTRACT NO. 60M62			ILLINOIS FED. AID PROJECT	