

INDEX OF SHEETS

1. General Plan and Elevation
2. General Details and Total Bill of Material
3. Retaining Wall Plan and Elevation
4. Sections and Details 1
5. Sections and Details 2
6. Soil Retention Plan and Section
7. Railing Details
8. Metal Shell Pile Details
9. Soil Borings 1
10. Soil Borings 2

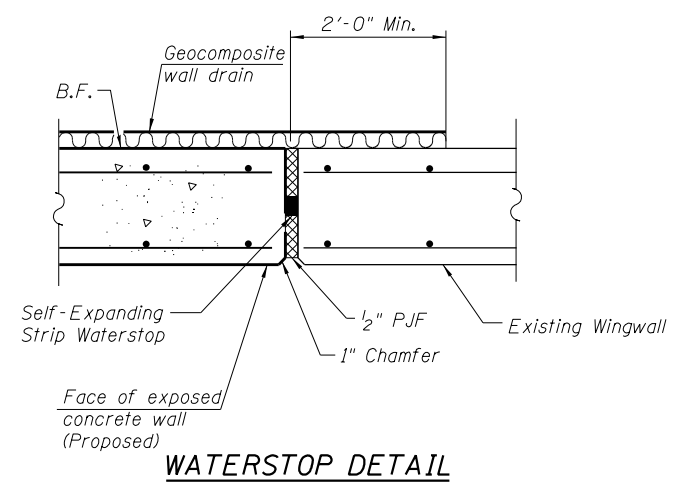
TOTAL BILL OF MATERIAL

ITEM	UNIT	TOTAL
Granular Embankment, Special	Cu. Yd.	53
Structure Excavation	Cu. Yd.	1,654
Removal and Disposal of Unsuitable Material for Structures	Cu. Yd.	53
Concrete Structures	Cu. Yd.	329.0
Form Liner Textured Surface	Sq. Ft.	1,676
Reinforcement Bars, Epoxy Coated	Pound	34,450
Furnishing Metal Shell Piles 14" x 0.250"	Foot	1,006
Driving Piles	Foot	1,006
Test Pile Metal Shells	Each	1
Geocomposite Wall Drain	Sq. Yd.	191
Granular Backfill for Structures	Cu. Yd.	312
Ornamental Railing	Foot	176
Pipe Underdrains for Structures 4"	Foot	122
Temporary Soil Retention System	Sq. Ft.	1,073

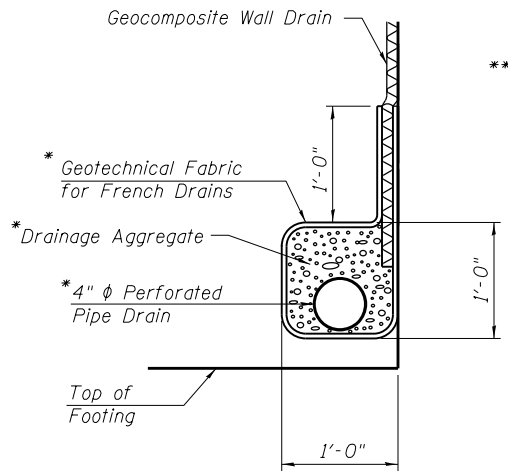
SECTION THRU RETAINING WALL

(Piles only used at Panels 1 and 2)

** Slope gutter to meet inlet rim elevation (See Sheet 1)



WATERSTOP DETAIL



PIPE UNDERDRAIN DETAIL

* Included in the cost of "Pipe Underdrains for Structures 4."

Note: Connect pipe underdrain to existing abutment underdrain. See drainage plans for details.

GENERAL NOTES

1. Reinforcement bars designated (E) shall be epoxy coated.
2. Construction joints shall be bonded.
3. The back face of Retaining Wall shall be waterproofed according to Article 503.18 of the Standard Specifications.
4. The form liner shall be a random Ashlar blend pattern consisting of the following block sizes:
 1. 28% - 4" X 18"
 2. 16% - 8" X 8"
 3. 28% - 8" X 11"
 4. 28% - 8" X 18"

100 S. WACKER DR.
 5TH FLOOR
 CHICAGO, IL 60606
 TEL (312) 939-1000
 FAX (312) 939-4998
URS

FILE NAME = 0162004-60M62-002-GND.dgn	USER NAME = Anthony.Plutz	DESIGNED - MJL	REVISIONS -	STATE OF ILLINOIS DEPARTMENT OF TRANSPORTATION	GENERAL DETAILS AND TOTAL BILL OF MATERIAL STRUCTURE NO. 016-2004	F.A.P. RTE. 330	SECTION 103R-5	COUNTY COOK	TOTAL SHEETS 778	SHEET NO. 411
PLOT SCALE = 8.3333' / in.	DRAWN - AMV	REVISIONS -	CONTRACT NO. 60M62							
PLOT DATE = 3/13/2013	CHECKED - MJL	REVISIONS -	ILLINOIS FED. AID PROJECT							
SHEET NO. 2 OF 10 SHEETS										