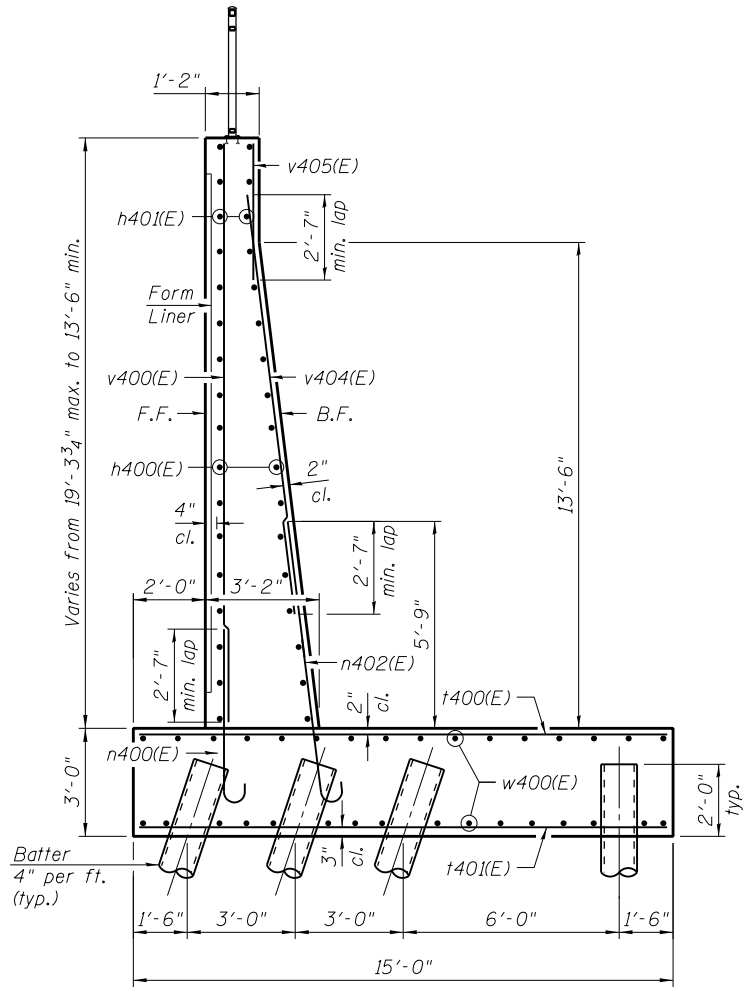
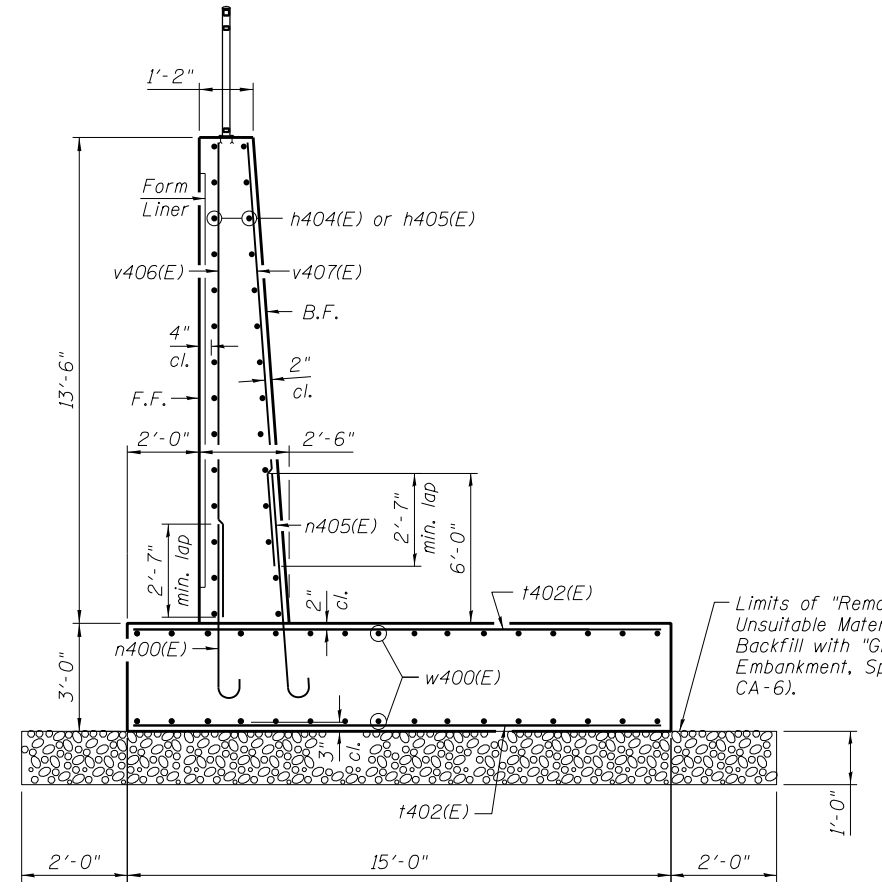


SECTION A-A
(Panel 1)



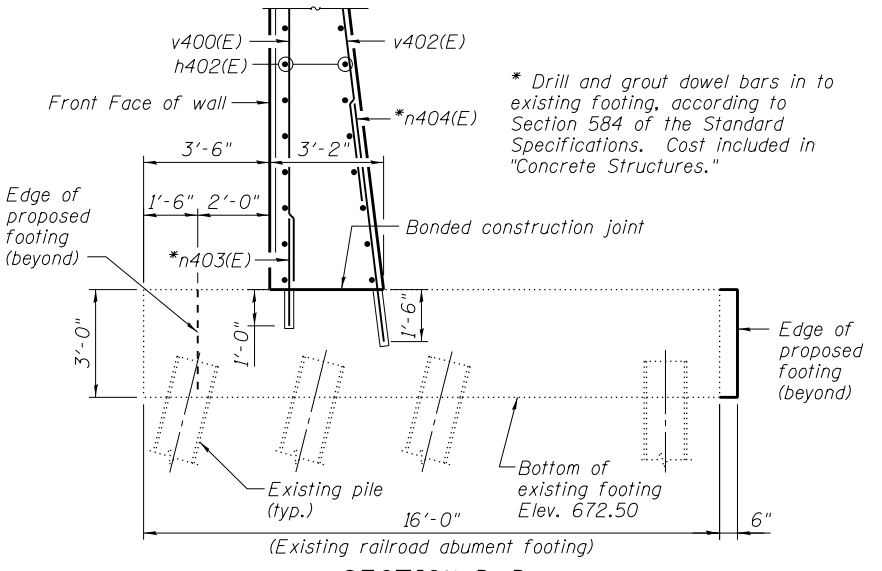
SECTION B-B
(Panel 2)



SECTION C-C
(Panels 3 and 4)

Maximum Applied Bearing Pressure = 3.20ksf

Limits of "Removal and Disposal of Unsuitable Material for Structures." Backfill with "Granular Embankment, Special" (compacted CA-6).



SECTION D-D

* Drill and grout dowel bars in to existing footing, according to Section 584 of the Standard Specifications. Cost included in "Concrete Structures."

URS
100 S. WACKER DR.
SUITE 600
CHICAGO, IL 60606
TEL (312) 935-1000
FAX (312) 935-4998

FILE NAME =	0162004-60M62-004-det.dgn
USER NAME =	Anthony.Plutz
DESIGNED -	MJL
CHECKED -	NPP
PLOT SCALE =	0:2.0000 '1' / in.
PLOT DATE =	3/13/2013

DESIGNED -	MJL
CHECKED -	NPP
DRAWN -	AMV
CHECKED -	MJL

REVISED -	
REVISED -	
REVISED -	
REVISED -	

STATE OF ILLINOIS
DEPARTMENT OF TRANSPORTATION

SECTIONS AND DETAILS 1
STRUCTURE NO. 016-2004

SHEET NO. 4 OF 10 SHEETS

F.A.P. RTE.	SECTION	COUNTY	TOTAL SHEETS	SHEET NO.
330	103R-5	COOK	778	413
CONTRACT NO. 60M62				
ILLINOIS FED. AID PROJECT				