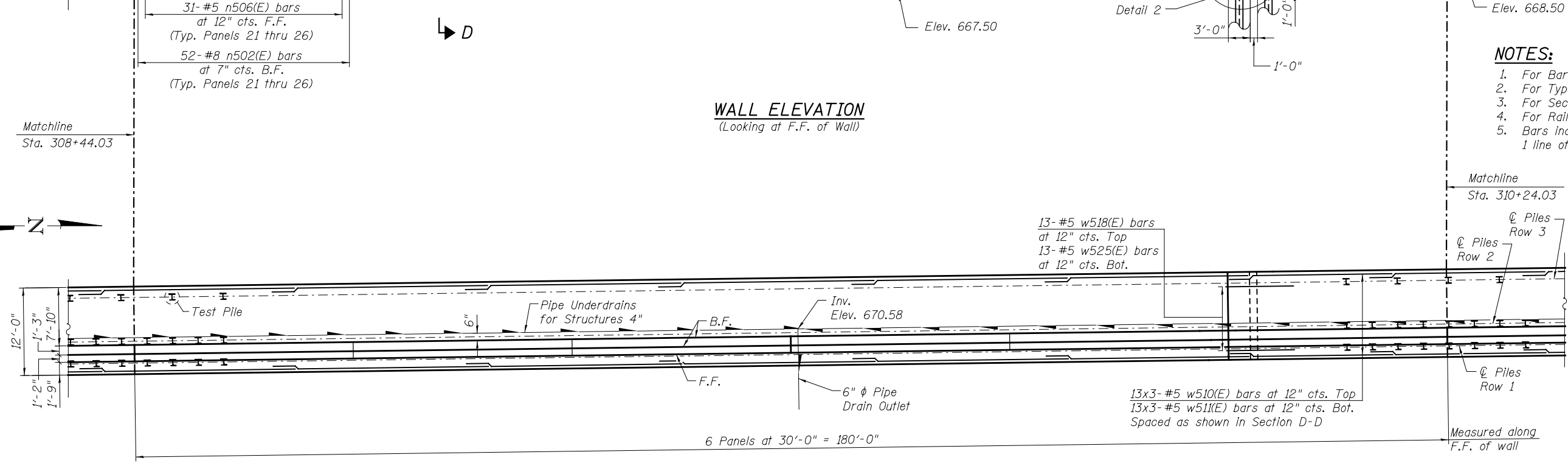


LEGEND:
 F.F. = Front Face of Wall
 B.F. = Back Face of Wall
 E.F. = Each Face of Wall
 I = Vertical Pile
 (1) = Panel No.

- NOTES:**
1. For Bar List & Detail 2 see Sheet 10.
 2. For Typical Details see Sheet 2.
 3. For Section D-D see Sheet 9.
 4. For Railing Details see Sheet 11.
 5. Bars indicated thus 1 x 3-#8 etc. indicates 1 line of bars with 3 lengths per line.

WALL ELEVATION
 (Looking at F.F. of Wall)



FOOTING PLAN

MINIMUM BAR LAP
 Basic Lap: #5 bars - 2'-7"
 Top Bar Lap: #5 bars - 2'-11"

100 S. WACKER DR.
 SUITE 600
 CHICAGO, IL 60606
 TEL (312) 939-1000
 FAX (312) 939-4998
URS

FILE NAME = 0162005-60M62-006-pln.dgn	USER NAME = arsalan_khan	DESIGNED - PMH	REVISED -
		CHECKED - AMK	REVISED -
	PLOT SCALE = 1/8" = 1'-0"	DRAWN - PMH	REVISED -
	PLOT DATE = 3/22/2013	CHECKED - AMK	REVISED -

STATE OF ILLINOIS
 DEPARTMENT OF TRANSPORTATION

DETAILED PLAN AND ELEVATION 4
 STRUCTURE NO. 016-2005

SHEET NO. 6 OF 21 SHEETS

F.A.P. RTE. 330	SECTION 103R-5	COUNTY COOK	TOTAL SHEETS 778	SHEET NO. 425
CONTRACT NO. 60M62				ILLINOIS FED. AID PROJECT