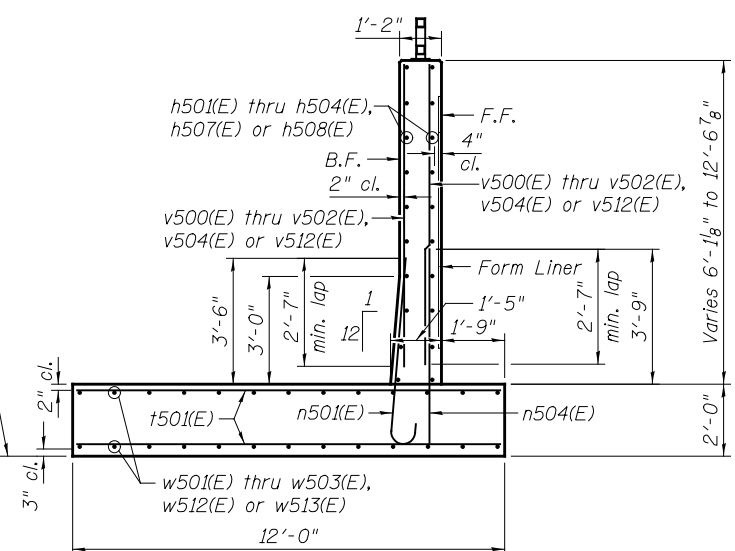


**SECTION A-A  
PANEL 1**

Maximum Applied Service Bearing Pressure  $Q_{max} = 1.32 \text{ ksf}$

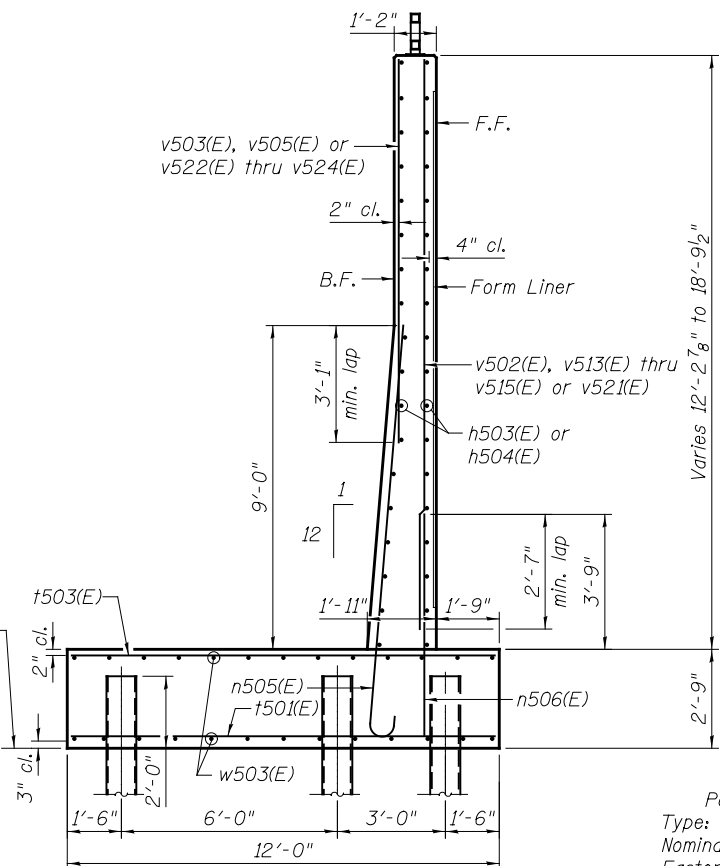
- Elev. 682.50 (Panel 2)
- Elev. 680.50 (Panel 3)
- Elev. 678.00 (Panel 4)
- Elev. 681.50 (Panel 33)
- Elev. 683.50 (Panel 34)
- Elev. 686.00 (Panel 35)
- Elev. 688.00 (Panel 36)



**SECTION B-B  
PANELS 2 THRU 4 & 33 THRU 36**

Maximum Applied Service Bearing Pressure  $Q_{max} = 2.00 \text{ ksf}$

- Elev. 675.00 (Panel 5)
- Elev. 673.50 (Panel 6)
- Elev. 671.00 (Panel 7)
- Elev. 674.50 (Panel 30)
- Elev. 677.00 (Panel 31)
- Elev. 679.00 (Panel 32)

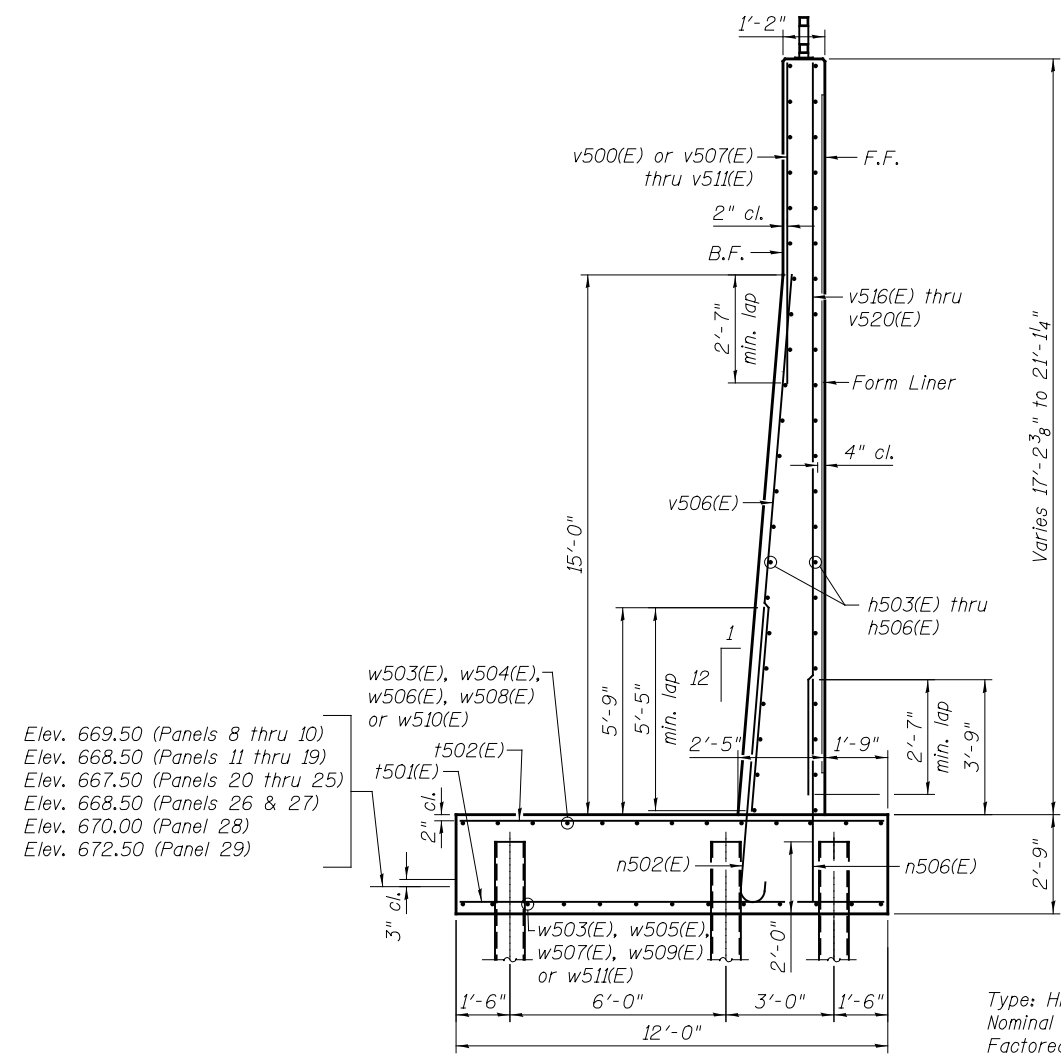


**SECTION C-C  
PANELS 5 THRU 7 & 30 THRU 32**

**PILE DATA**

Panels 5 thru 7 & 30 thru 32  
 Type: HP14x73  
 Nominal Required Bearing: 240 kips  
 Factored Resistance Available: 80 kips  
 Est. Length: 45' \*  
 No. Production Piles: 124  
 No. Test Piles: 2

\* Pile length is required for fixity to resist lateral load.

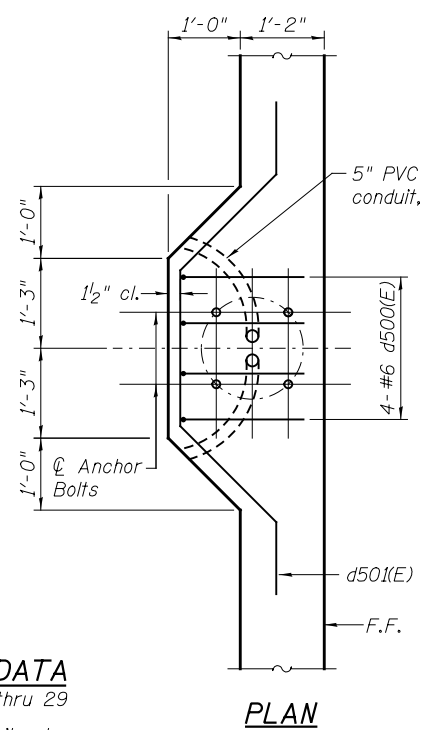


**SECTION D-D  
PANELS 8 THRU 29**

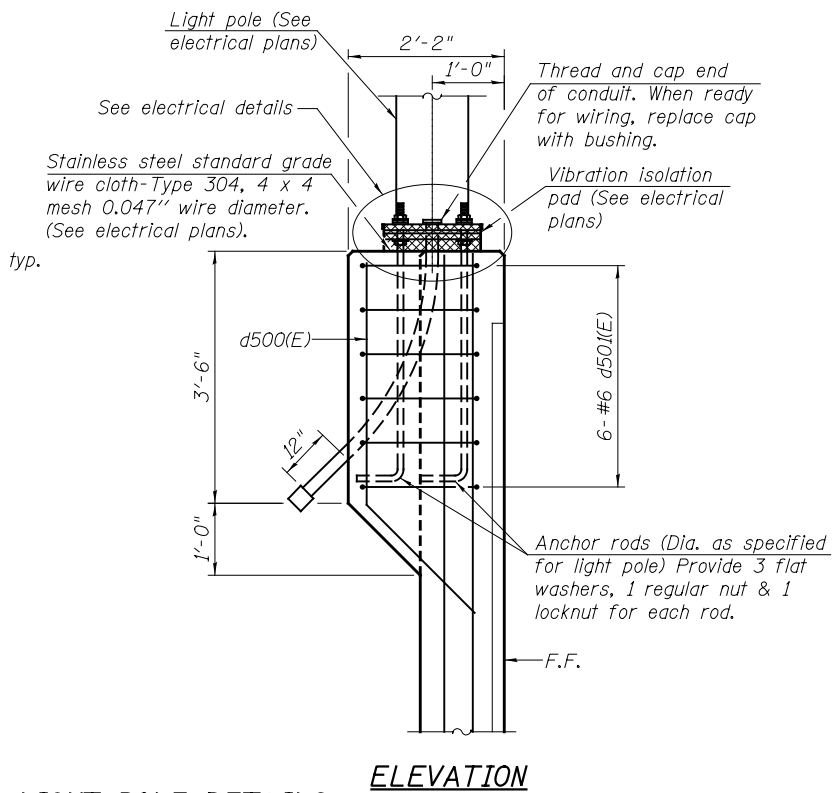
- Elev. 669.50 (Panels 8 thru 10)
- Elev. 668.50 (Panels 11 thru 19)
- Elev. 667.50 (Panels 20 thru 25)
- Elev. 668.50 (Panels 26 & 27)
- Elev. 670.00 (Panel 28)
- Elev. 672.50 (Panel 29)

**PILE DATA**

Panels 8 thru 29  
 Type: HP14x73 with pile shoes  
 Nominal Required Bearing: 216 kips  
 Factored Resistance Available: 80 kips  
 Est. Length: 55'  
 No. Production Piles: 446  
 No. Test Piles: 4



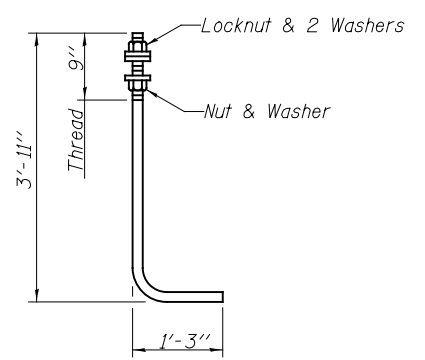
**PLAN**



**ELEVATION**

**LIGHT POLE DETAILS**

Mounted on retaining wall  
 Typical, 4 locations  
 Note:  
 Cost of anchor rods, conduit and ground rods is included with Concrete Structures.



**ANCHOR ROD**

Diameter as specified for light poles.  
 (ASTM F 1554 Grade 105)  
 Cost of anchor rods is included with Concrete Structures.

**LEGEND:**

F.F. = Front Face of Wall  
 B.F. = Back Face of Wall  
 E.F. = Each Face of Wall

**NOTES:**

1. For Bar List see Sheet 10.

FILE NAME = 0162005-60M62-009-det.dgn	USER NAME = orsalan_khan	DESIGNED - PMH	REVISED -	<b>STATE OF ILLINOIS DEPARTMENT OF TRANSPORTATION</b>	<b>SECTIONS AND DETAILS STRUCTURE NO. 016-2005</b>	F.A.P. R.T.E. = 330	SECTION = 103R-5	COUNTY = COOK	TOTAL SHEETS = 778	SHEET NO. = 428
PLOT SCALE = 5/4,000 1/4" = 1'-0"	DRAWN - PMH	REVISED -	ILLINOIS FED. AID PROJECT							
PLOT DATE = 3/22/2013	CHECKED - AMK	REVISED -	CONTRACT NO. 60M62							
						SHEET NO. 9 OF 21 SHEETS				