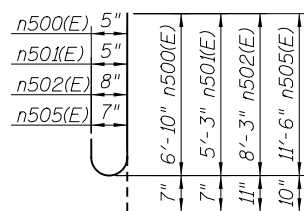
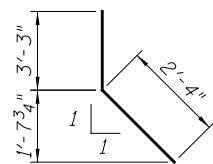


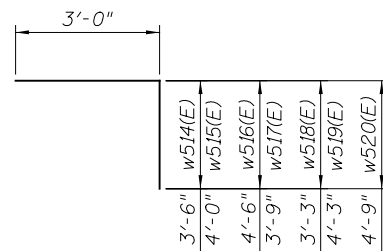
BARS w521(E) THRU w525(E)



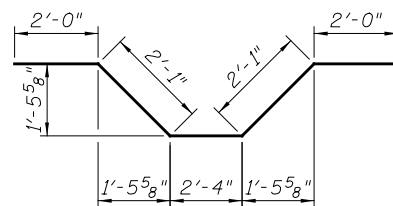
BARS n500(E) THRU n502(E) & n505(E)



BARS d500(E)



BARS w514(E) THRU w520(E)



BARS d501(E)

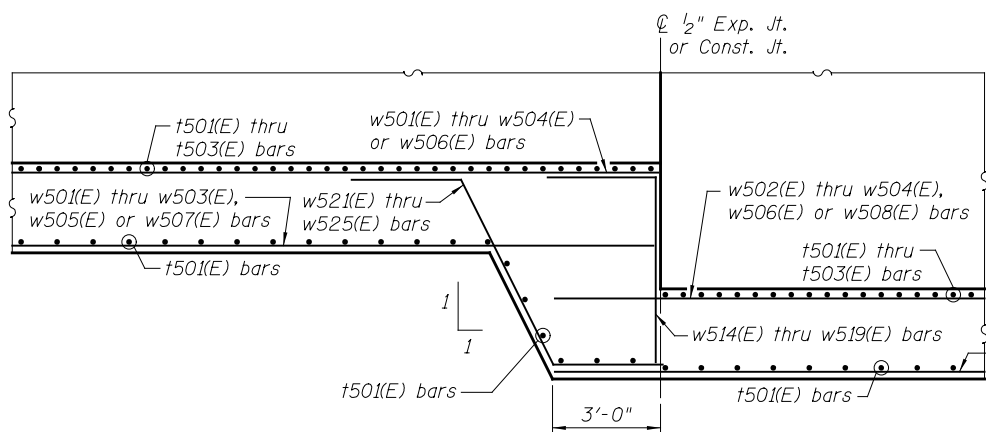
BILL OF MATERIAL

Bar	No.	Size	Length	Shape
d500(E)	16	#6	5'-7"	
d501(E)	24	#6	10'-6"	
h500(E)	12	#4	12'-1"	
h501(E)	40	#5	30'-4"	
h502(E)	28	#5	27'-0"	
h503(E)	652	#5	33'-0"	
h504(E)	366	#5	29'-8"	
h505(E)	132	#5	25'-6"	
h506(E)	44	#5	22'-2"	
h507(E)	16	#5	31'-0"	
h508(E)	20	#5	27'-8"	
h509(E)	48	#5	4'-0"	
h510(E)	32	#5	2'-0"	
n500(E)	12	#5	7'-5"	
n501(E)	398	#5	5'-10"	
n502(E)	1092	#8	9'-2"	
n503(E)	12	#5	6'-10"	
n504(E)	204	#5	5'-6"	
n505(E)	312	#7	12'-4"	
n506(E)	836	#5	6'-3"	

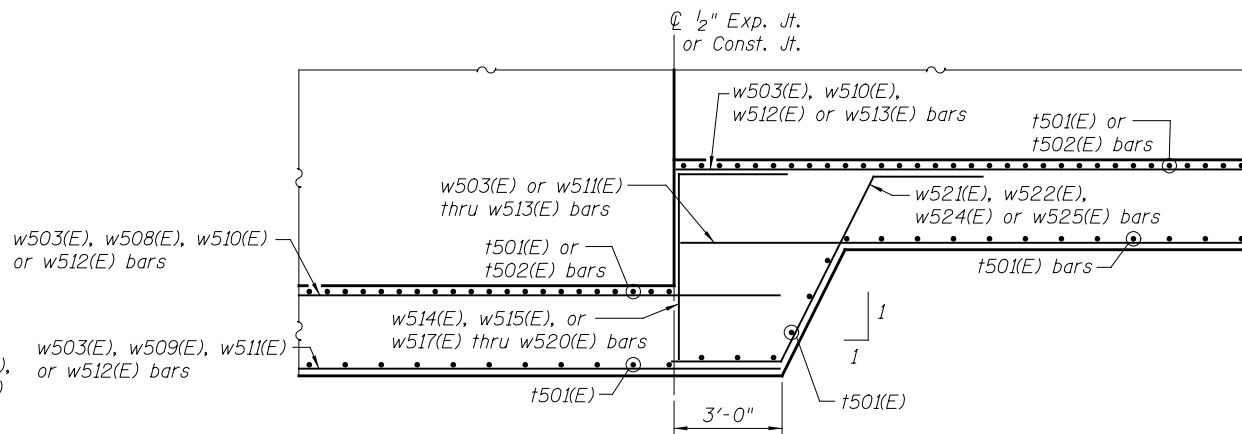
BILL OF MATERIAL (cont.)

Bar	No.	Size	Length	Shape
t500(E)	28	#6	5'-8"	
t501(E)	1213	#5	11'-8"	
t502(E)	1261	#7	11'-8"	
t503(E)	362	#6	11'-8"	
v500(E)	376	#5	7'-3"	
v501(E)	174	#5	9'-3"	
v502(E)	113	#5	11'-9"	
v503(E)	52	#6	8'-11"	
v504(E)	92	#5	10'-8"	
v505(E)	52	#6	12'-11"	
v506(E)	1092	#8	14'-10"	
v507(E)	390	#5	7'-10"	
v508(E)	286	#5	8'-3"	
v509(E)	104	#5	8'-6"	
v510(E)	52	#5	8'-9"	
v511(E)	52	#5	5'-4"	
v512(E)	86	#5	5'-8"	
v513(E)	31	#5	13'-8"	
v514(E)	62	#5	15'-2"	
v515(E)	31	#5	17'-8"	
v516(E)	289	#5	19'-6"	
v517(E)	148	#5	18'-11"	
v518(E)	93	#5	18'-4"	
v519(E)	93	#5	20'-0"	
v520(E)	31	#5	16'-7"	
v521(E)	31	#5	13'-1"	
v522(E)	104	#6	10'-5"	
v523(E)	52	#6	8'-4"	
v524(E)	52	#6	6'-11"	
w500(E)	28	#5	7'-9"	
w501(E)	26	#5	27'-0"	
w502(E)	52	#5	30'-0"	
w503(E)	260	#5	32'-8"	
w504(E)	52	#5	25'-6"	
w505(E)	52	#5	25'-3"	
w506(E)	117	#5	29'-9"	
w507(E)	117	#5	29'-6"	
w508(E)	91	#5	29'-3"	
w509(E)	91	#5	29'-0"	
w510(E)	39	#5	23'-0"	
w511(E)	39	#5	22'-9"	
w512(E)	26	#5	30'-8"	
w513(E)	26	#5	27'-8"	
w514(E)	39	#5	6'-6"	
w515(E)	59	#5	7'-0"	
w516(E)	13	#5	7'-6"	
w517(E)	39	#5	6'-9"	
w518(E)	39	#5	6'-3"	
w519(E)	26	#5	7'-3"	
w520(E)	26	#5	7'-9"	
w521(E)	65	#5	10'-11"	
w522(E)	85	#5	11'-7"	
w523(E)	13	#5	12'-4"	
w524(E)	39	#5	10'-2"	
w525(E)	39	#5	10'-7"	
Reinforcement Bars, Epoxy Coated		Pound	250,470	
Concrete Structures		Cu. Yd.	2,226.7	

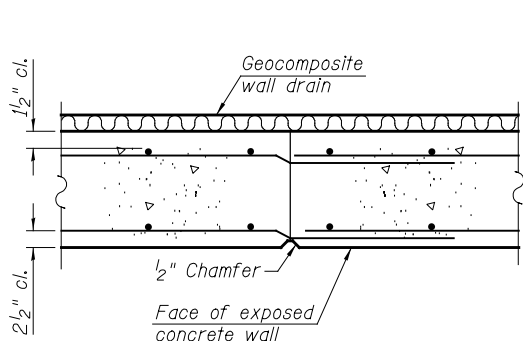
Bars indicated thus 1 x 3-#8 etc. indicates 1 line of bars with 3 lengths per line.



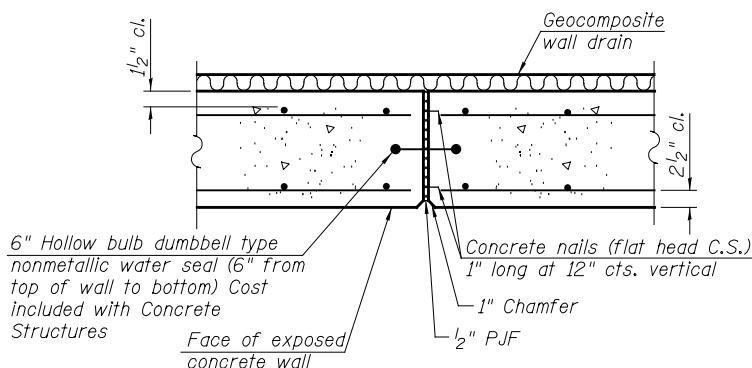
DETAIL 1



DETAIL 2



CONSTRUCTION JOINT DETAIL



EXPANSION JOINT DETAIL

FILE NAME = 0162005-60M62-010-bom.dgn

USER NAME = arsalan_khan
DESIGNED - PMH
CHECKED - AMK
PLOT SCALE = 5/4,0000 '1' / in.
DRAWN - PMH
PLOT DATE = 3/22/2013

REVISOR -
REVISION -
REVISOR -
REVISION -
REVISOR -
REVISION -

**STATE OF ILLINOIS
DEPARTMENT OF TRANSPORTATION**

**BILL OF MATERIAL
STRUCTURE NO. 016-2005**

SHEET NO. 10 OF 21 SHEETS

F.A.P. RTE.	SECTION	COUNTY	TOTAL SHEETS	SHEET NO.
330	103R-5	COOK	778	429
CONTRACT NO. 60M62				
ILLINOIS FED. AID PROJECT				