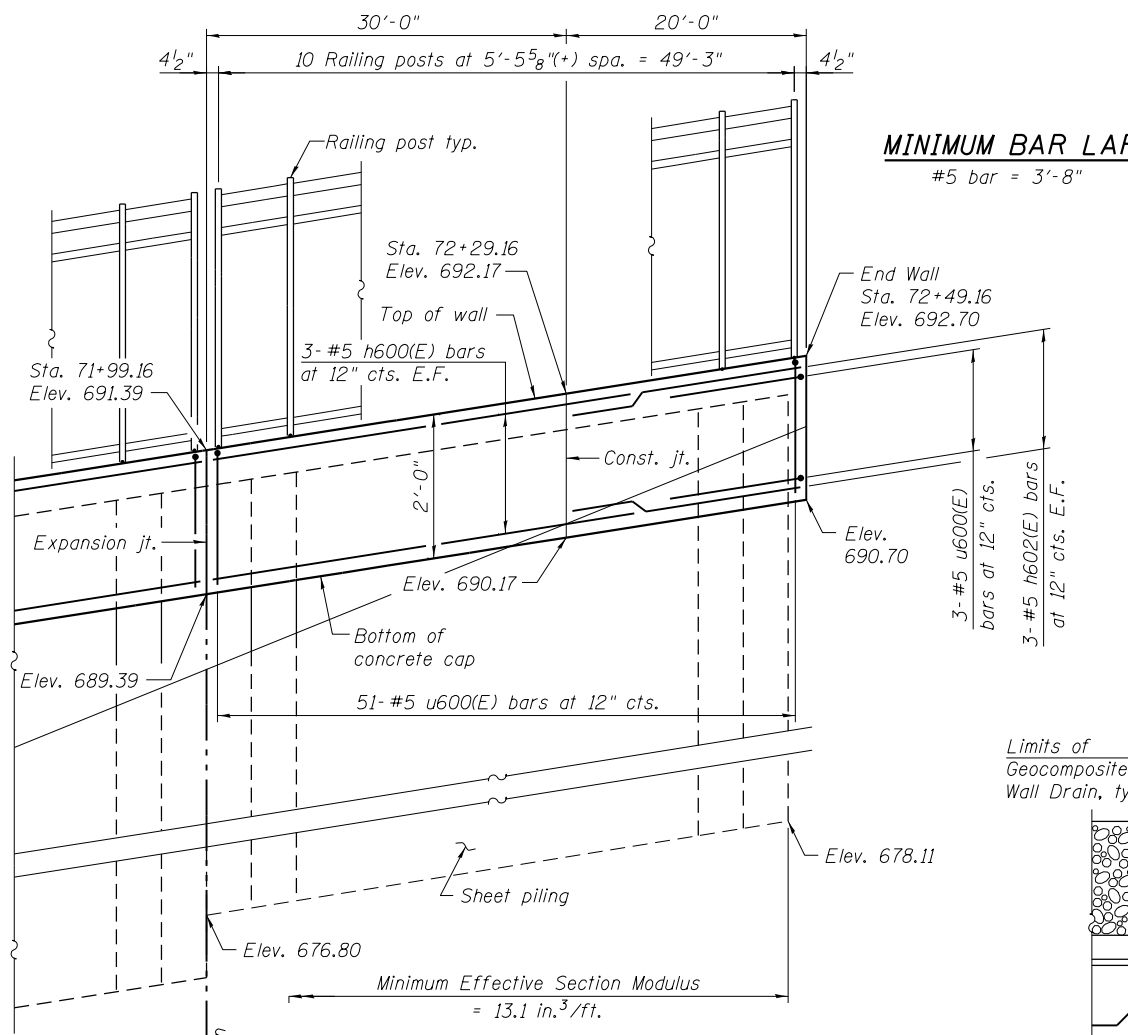


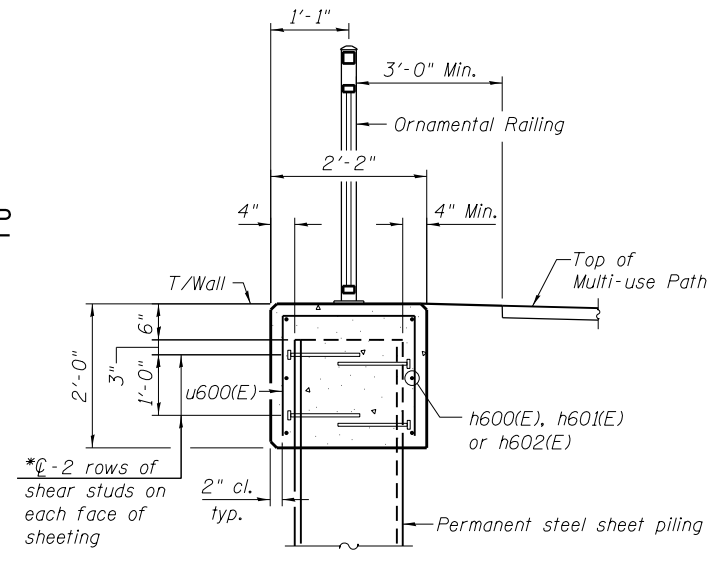
BILL OF MATERIAL

Bar	No.	Size	Length	Shape
h600(E)	126	#5	33'-8"	—
h601(E)	60	#5	29'-8"	—
h602(E)	6	#5	19'-8"	—
u600(E)	967	#5	5'-2"	□
Reinforcement Bars, Epoxy Coated			Pound	11,620
Concrete Structures			Cu. Yd.	152.5

Bars indicated thus 3x2-#5 h600(E) etc. indicates 3 lines of bars with 2 lengths per line.

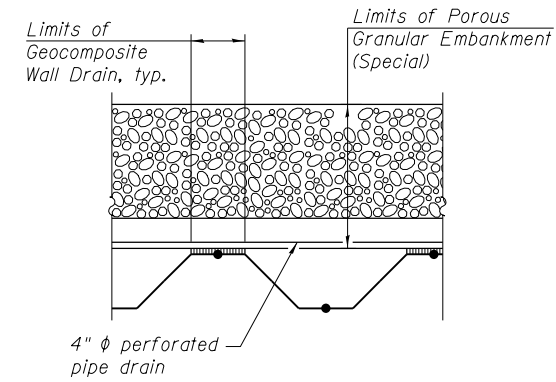


MINIMUM BAR LAP
#5 bar = 3'-8"

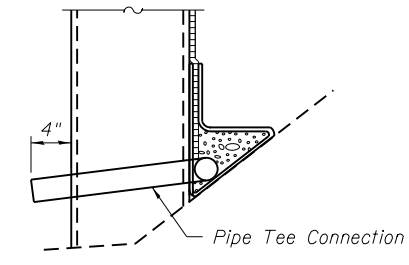


* Shear studs shall be 3/4" φ x 12" long granular or solid flux filled headed studs automatically end welded in field to sheet piling.

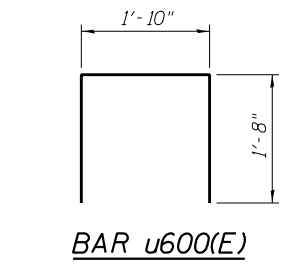
TYPICAL SECTION THROUGH CONCRETE CAP



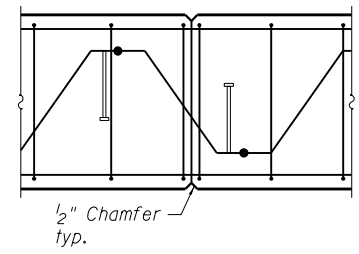
WALL DRAINAGE DETAILS



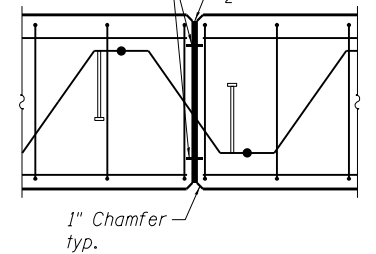
SECTION THRU WEEP HOLE



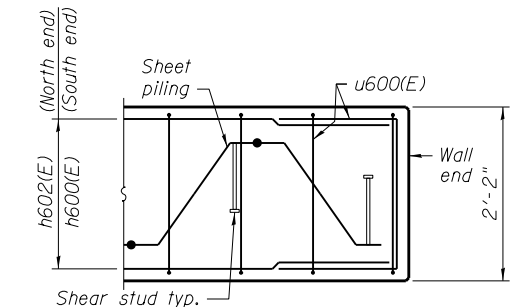
Notes:
1. For Typical Details see Sheet 2.
2. Bars indicated thus 3x2-#5 etc. indicates 3 lines of bars with 2 lengths per line.



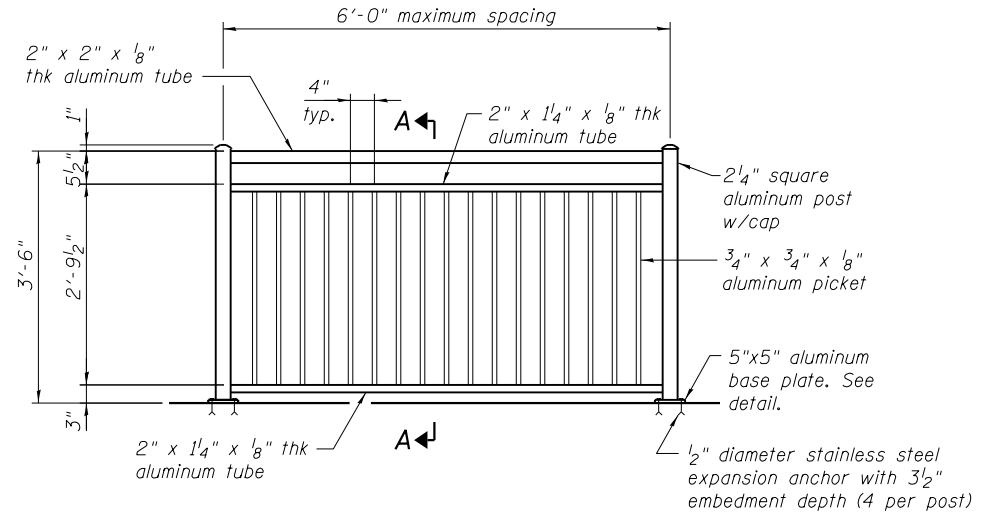
WALL CONSTRUCTION JOINT



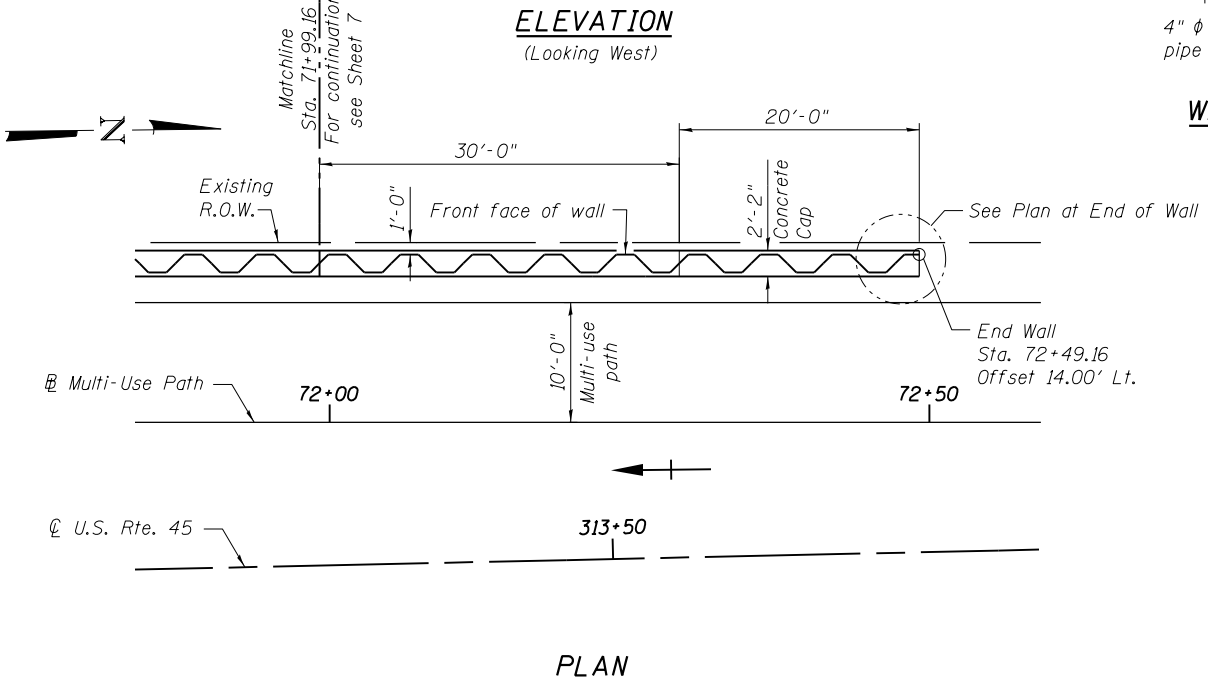
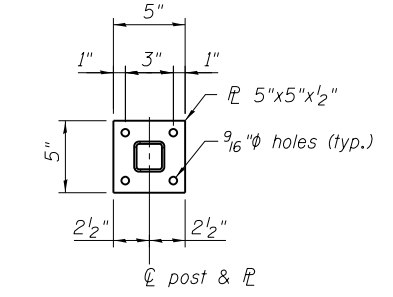
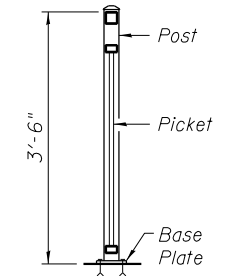
WALL EXPANSION JOINT



PLAN AT END OF WALL

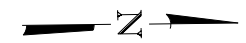


TYPICAL ORNAMENTAL RAILING



ELEVATION (Looking West)

PLAN



Matchline Sta. 71+99.16 For continuation see Sheet 7

100 S. WACKER DR.
SUITE 600
CHICAGO, IL 60606
TEL (312) 939-1000
FAX (312) 939-4998

URS

FILE NAME = 0162006-60M62-008-pln.dgn	USER NAME = Anthony.Plutz	DESIGNED - PMH	REVISED -
		CHECKED - AMK	REVISED -
		DRAWN - AMV	REVISED -
		CHECKED - AMK	REVISED -
			REVISED -

STATE OF ILLINOIS
DEPARTMENT OF TRANSPORTATION

DETAILED PLAN AND ELEVATION 6
STRUCTURE NO. 016-2006

SHEET NO. 8 OF 21 SHEETS

F.A.P. R.E. 330	SECTION 103R-5	COUNTY COOK	TOTAL SHEETS 778	SHEET NO. 448
CONTRACT NO. 60M62				
ILLINOIS FED. AID PROJECT				