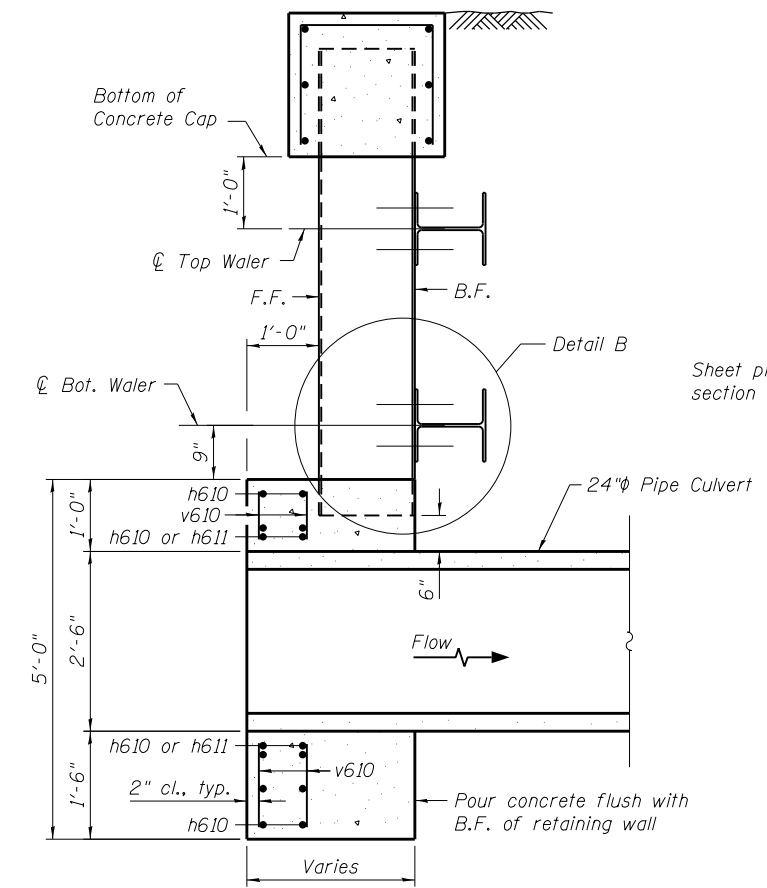
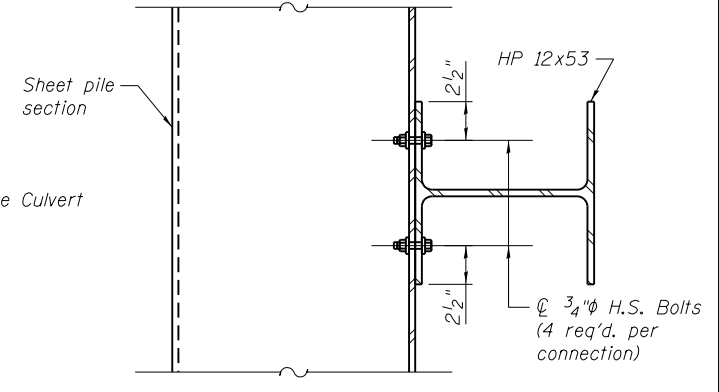


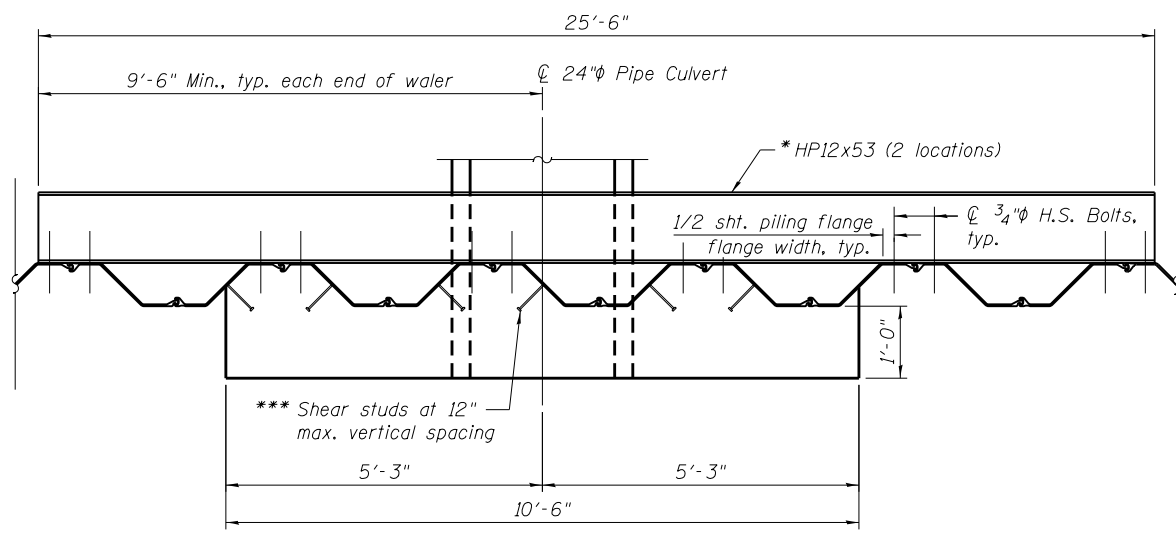
**ELEVATION**  
(Looking at F.F. of wall)



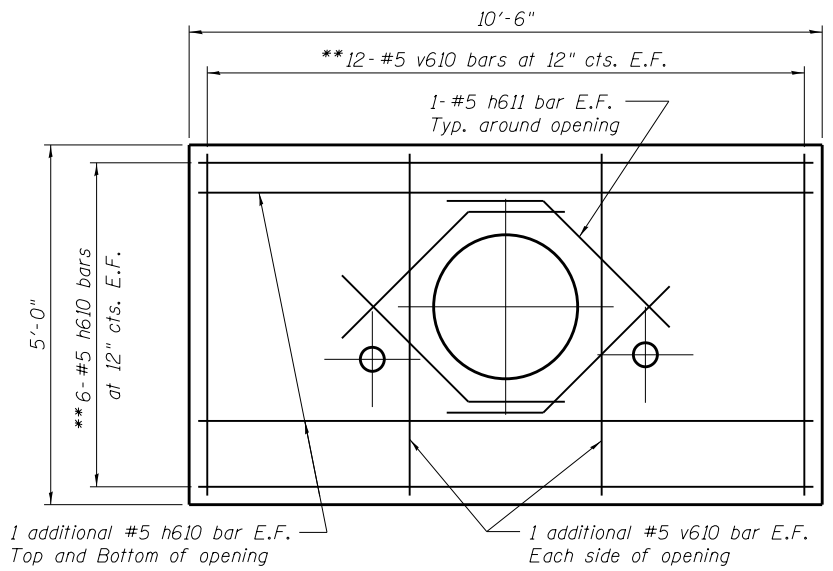
**SECTION A-A**



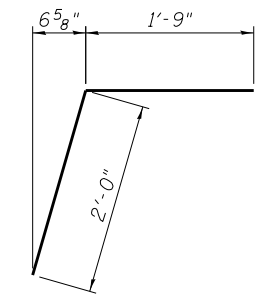
**DETAIL B**



**PLAN**  
Showing opening at Sta. 64+77.70  
(Opening at Sta. 68+72.98 similar)



**HEADWALL DETAIL**  
Showing Reinforcement



**BAR h611**

**2 HEADWALLS  
BILL OF MATERIAL**

Bar	No.	Size	Length	Shape
h610	32	#5	10'-2"	—
h611	16	#5	3'-9"	—
v610	56	#5	4'-8"	—
Reinforcement Bars			Pound	680
Concrete Structures			Cu. Yd.	9.2

\*\*\* Shear studs shall be 3/4" diameter x 12" long granular or solid flux filled headed studs automatically end welded in field to sheet piling.

\* HP12x53 sections shall be connected at a minimum of 6 flange pairs.

\*\* Trim to fit around opening

100 S. WACKER DR.  
 CHICAGO, IL 60606  
 TEL (312) 935-1000  
 FAX (312) 935-4998  
**URS**

FILE NAME = 0162006-60M62-009-det.dgn	USER NAME = Anthony.Plutz	DESIGNED - PMH	REVISIONS -	<b>STATE OF ILLINOIS DEPARTMENT OF TRANSPORTATION</b>	<b>WALER AND HEADWALL DETAILS STRUCTURE NO. 016-2006</b>	F.A.P. RTE. 330	SECTION 103R-5	COUNTY COOK	TOTAL SHEETS 778	SHEET NO. 449	
PLOT SCALE = 2:8.0000 '1' / in.	DRAWN - PMH	CHECKED - AMK	REVISIONS -			CONTRACT NO. 60M62					
PLOT DATE = 3/13/2013	CHECKED - AMK	REVISIONS -	REVISIONS -			ILLINOIS FED. AID PROJECT					
SHEET NO. 9 OF 21 SHEETS											