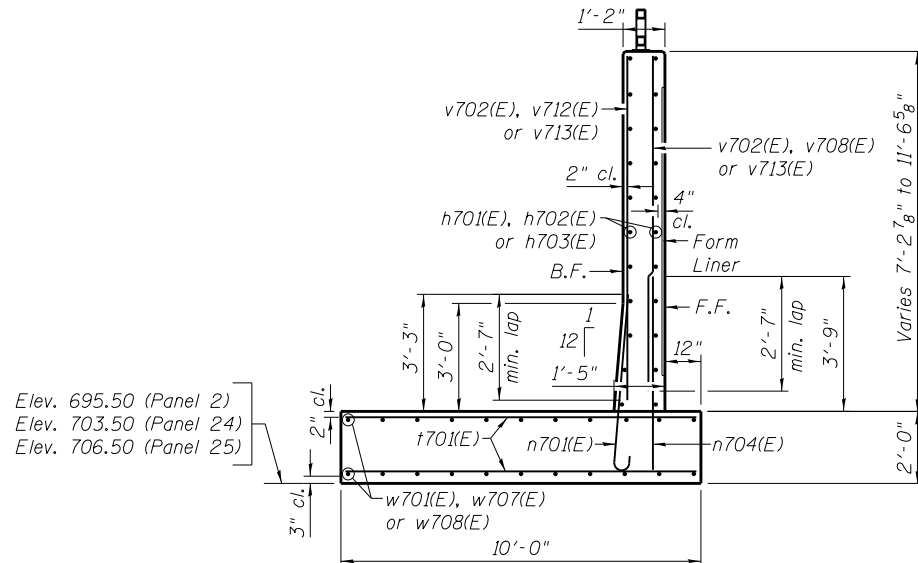


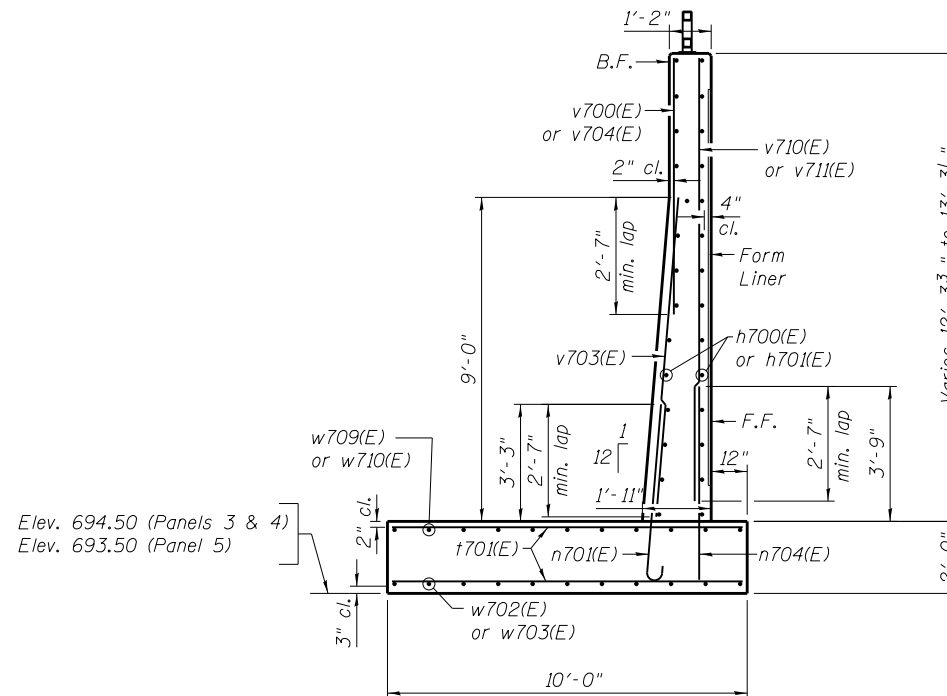
**SECTION A-A**  
**PANEL 1**

Maximum Applied Bearing Pressure = 2.23 ksf



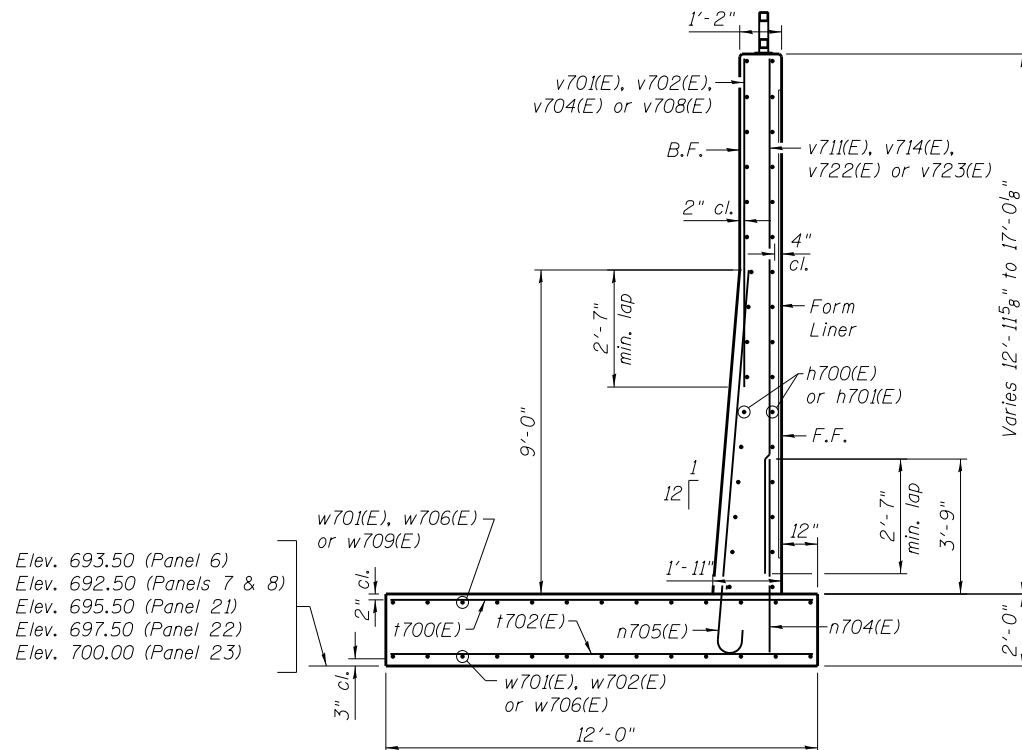
**SECTION B-B**  
**PANELS 2, 24 & 25**

Maximum Applied Bearing Pressure = 2.23 ksf



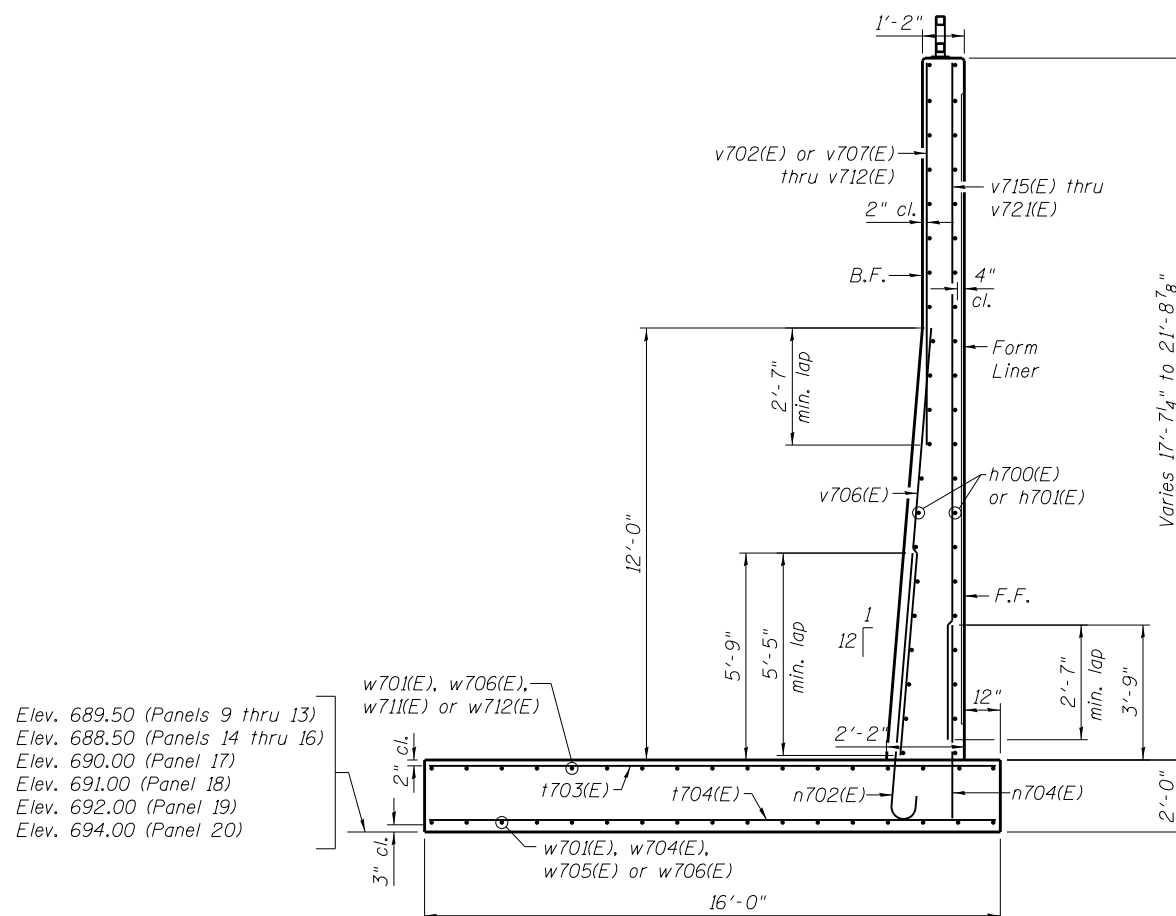
**SECTION C-C**  
**PANELS 3 THRU 5**

Maximum Applied Bearing Pressure = 2.80 ksf



**SECTION D-D**  
**PANELS 6 THRU 8 & 21 THRU 23**

Maximum Applied Bearing Pressure = 3.68 ksf



**SECTION E-E**  
**PANELS 9 THRU 20**

Maximum Applied Bearing Pressure = 4.46 ksf

**LEGEND**

F.F. = Front Face of Wall  
B.F. = Back Face of Wall  
E.F. = Each Face of Wall

**NOTES**

1. For Bar List see Sheet 8.

|                           |                           |                                 |           |
|---------------------------|---------------------------|---------------------------------|-----------|
| FILE NAME =               | USER NAME = Anthony.Plutz | DESIGNED - PMH                  | REVISED - |
| 0162007-60M62-007-det.dgn |                           | CHECKED - MJL                   | REVISED - |
|                           |                           | PLOT SCALE = 0:2.0000 1' = 1/4" | REVISED - |
|                           |                           | DRAWN - PMH                     | REVISED - |
|                           |                           | CHECKED - MJL                   | REVISED - |
|                           |                           | PLOT DATE = 3/13/2013           |           |

| F.A.P. RTE.               | SECTION | COUNTY | TOTAL SHEETS | SHEET NO. |
|---------------------------|---------|--------|--------------|-----------|
| 330                       | 103R-5  | COOK   | 778          | 468       |
| CONTRACT NO. 60M62        |         |        |              |           |
| ILLINOIS FED. AID PROJECT |         |        |              |           |