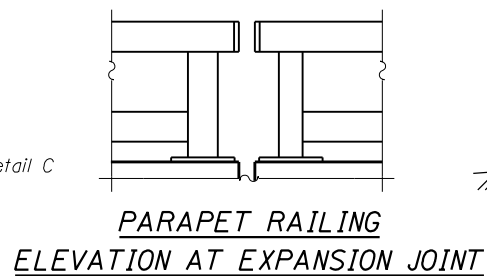
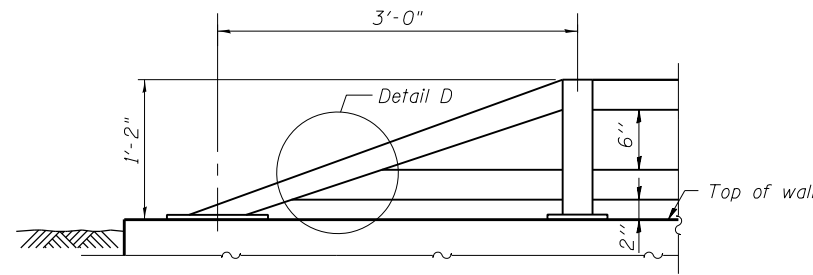


**PARAPET RAILING
ELEVATION**
(Inside Face of Rail)

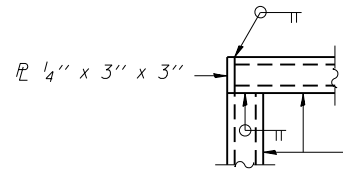


**PARAPET RAILING
ELEVATION AT EXPANSION JOINT**

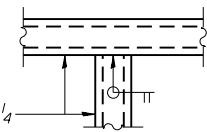


**PARAPET RAILING
AT END SECTION**

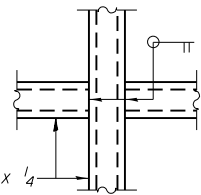
Note:
All steel rail elements shall be galvanized according to Article 509.05 of the Standard Specifications.



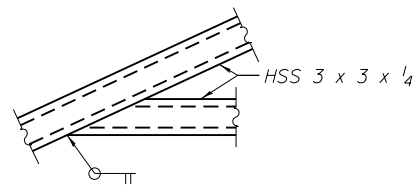
DETAIL A



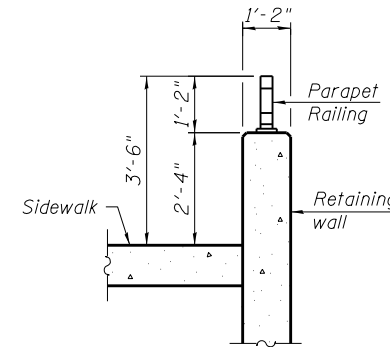
DETAIL B



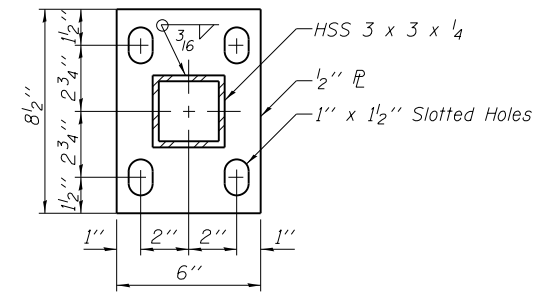
DETAIL C



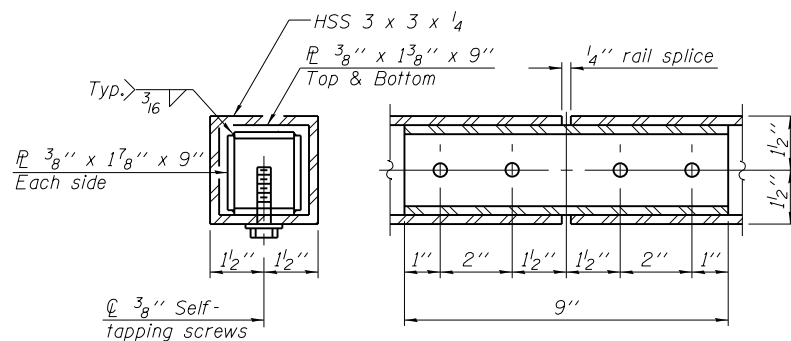
DETAIL D



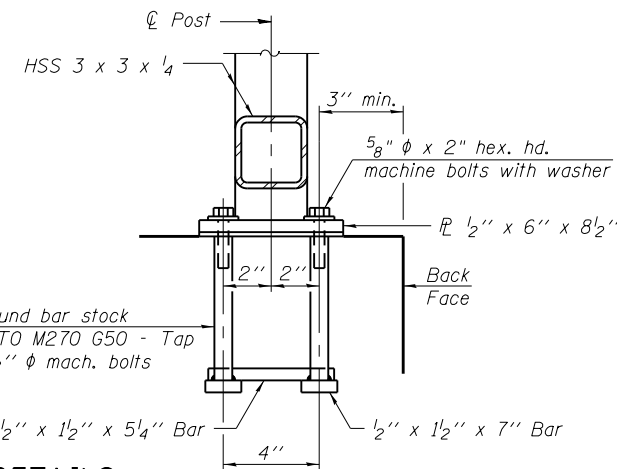
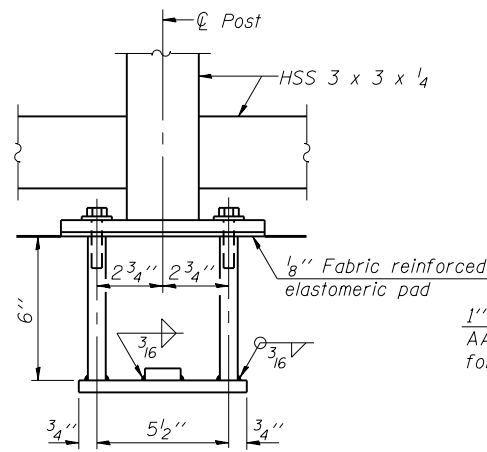
SECTION THRU RAILING



BASE PLATE



RAIL SPLICE



ANCHOR BOLT DETAILS

In lieu of the cast-in-place anchor device shown, the Contractor has the option of drilling and setting 5/8" phi anchor rods according to Article 509.06 of the Standard Specifications. Embedment shall be according to the manufacturer's specifications.

BILL OF MATERIAL

Item	Unit	Quantity
Parapet Railing	Foot	732

FILE NAME = 0162007-60M62-009-Rail.dgn	USER NAME = Anthony.Plutz	DESIGNED - JCE	REVISED -
		CHECKED - PMH	REVISED -
	PLOT SCALE = 0:2.0000 '1' = 1/4" in.	DRAWN - AMV	REVISED -
	PLOT DATE = 3/13/2013	CHECKED - PMH	REVISED -

F.A.P. RTE. 330	SECTION 103R-5	COUNTY COOK	TOTAL SHEETS 778	SHEET NO. 470
CONTRACT NO. 60M62				ILLINOIS FED. AID PROJECT